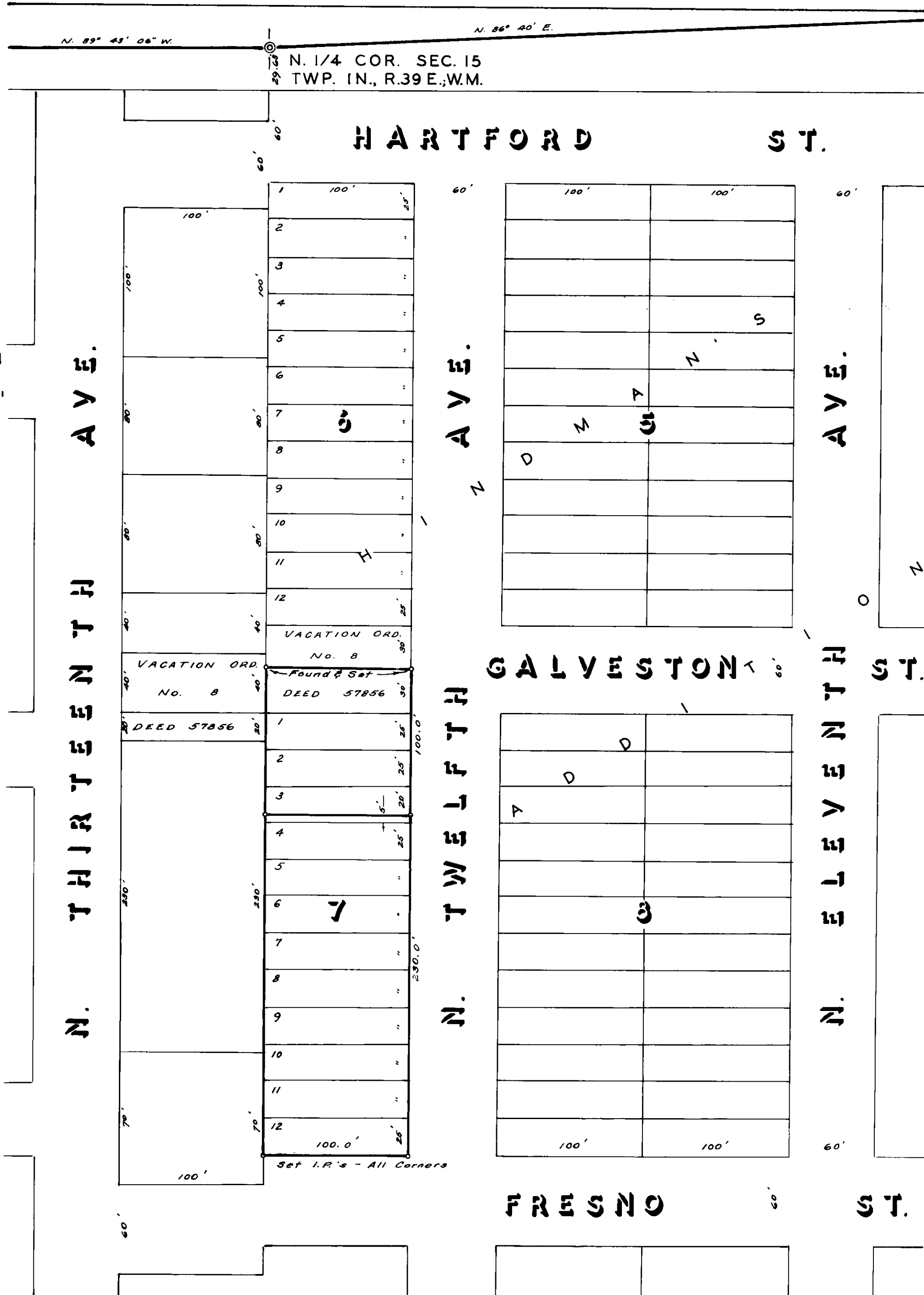
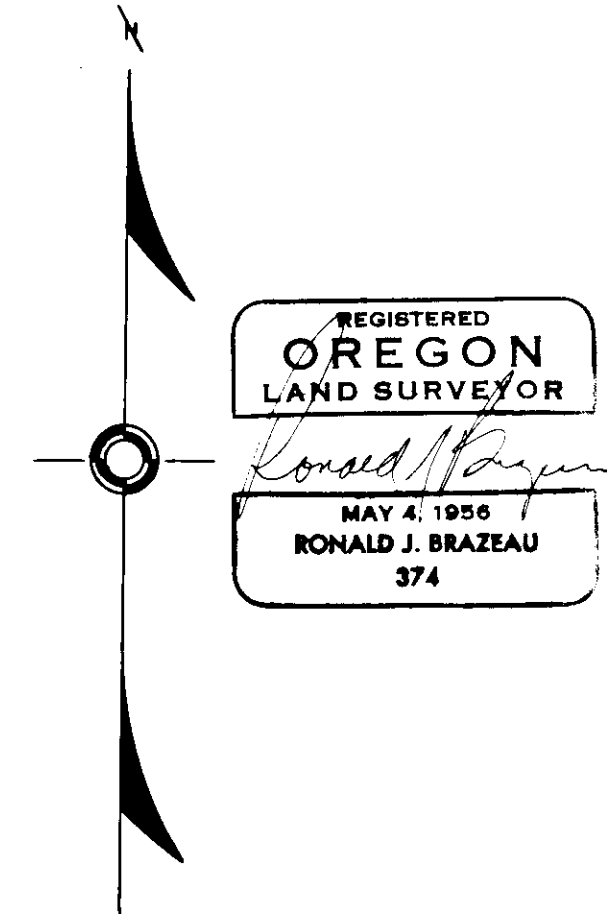


MAP OF FIELD SURVEY
 LOCATED IN BLOCK 7 OF HINDMAN'S ADDITION
 CITY OF ELGIN, UNION COUNTY, OREGON
 DATE: AUGUST 1977 SCALE: 1"=60'
 BEARINGS: TRUE, FROM S. LINE OF SEC. 10



REF: JN 264



FOR: CHAS WILLIAMS

75.77