

REFERENCE MATERIAL

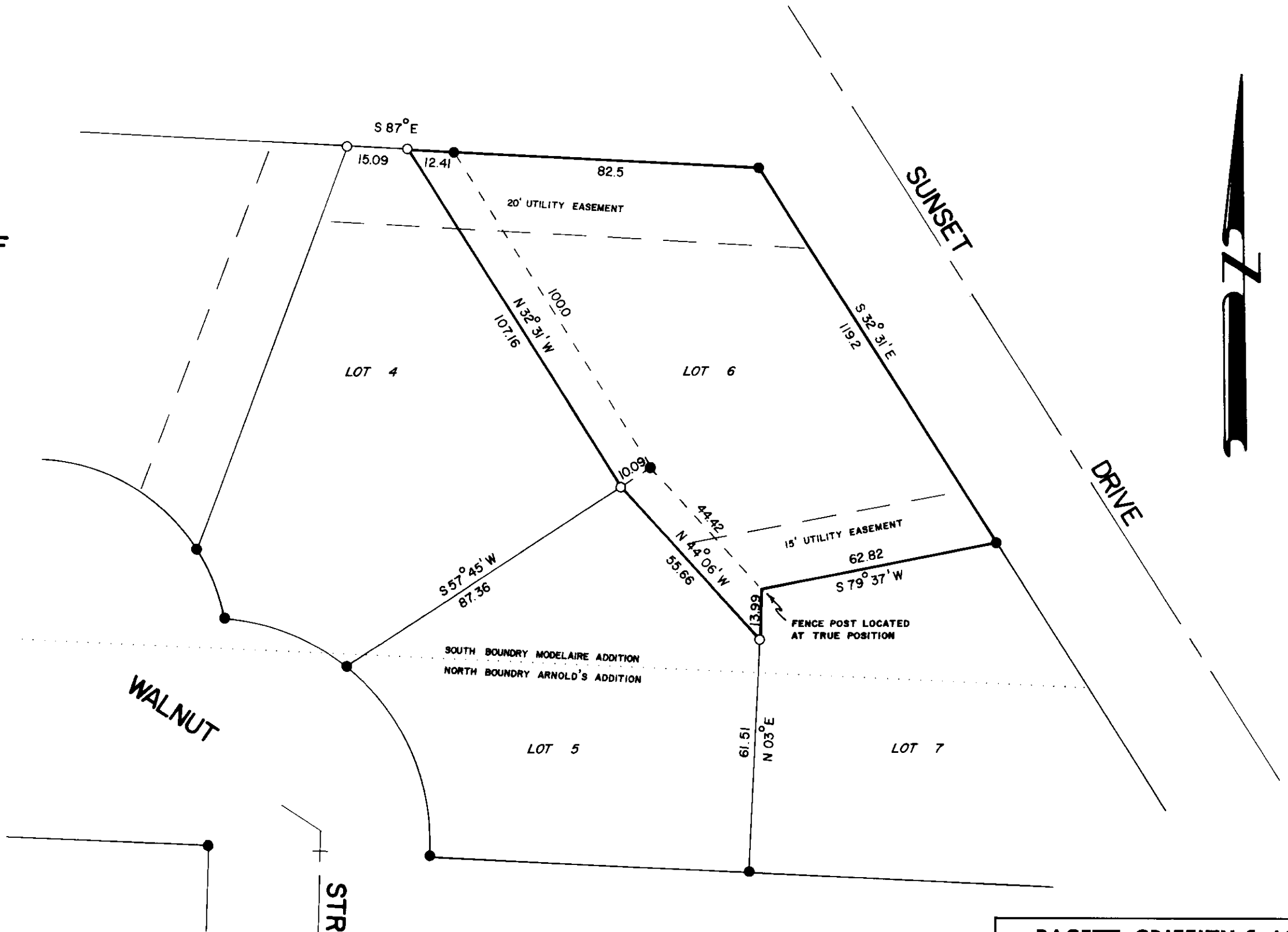
BRUECHER SUBDIVISION PLAT

BASIS OF BEARING

BRUECHER SUBDIVISION PLAT

LEGEND

- FOUND MONUMENT OF RECORD
- SET 5/8" x 30" REBAR



REGISTERED
PROFESSIONAL
LAND SURVEYOR

Gregory T. Blackman

OREGON
JULY 13, 1973
GREGORY T. BLACKMAN
991

BAGETT, GRIFFITH & ASSOCIATES La Grande, Oregon		
Map of Survey ALL OF LOT 6 AND THE NORTHEASTERLY 10 FEET OF LOTS 4 AND 5, BLOCK 1 IN BRUECHER SUBDIVISION TO LA GRANDE UNION COUNTY, OREGON		
SURVEYED FOR	ORLAND RUDD	
SURVEYED BY	G T B	10 / 76
Scale: 1" = 30'	Drawn by: S S Z	7 / 77

69-77