

'B' Ave.

REFERENCE MATERIAL  
 CITY MONUMENTATION MAP 1922  
 SURVEY # 37-63  
 38-67  
 64-70  
 65-70  
 35-73  
 49-76

Found 3/4" Pipe  
 'A' Ave. 289<sup>90</sup> (290.0)  
 N 87° 02' 39" W

Found recorded 5/8" rebar. 0.47 south & 0.27 west of the recorded position.

- LEGEND
- ⊙ SET 1/2" REBAR
  - FOUND UNRECORDED PINS
  - ▲ MONUMENT OF RECORDS
  - ( ) RECORDED DISTANCE

Fnd. 5/8" Rebar Set In Concrete

2nd Street

319<sup>92</sup> (320.0) N 02° 56' 08" E  
 319<sup>52</sup> (320.0) N 02° 56' 08" E  
 460<sup>98</sup> (461.65) N 02° 56' 08" E

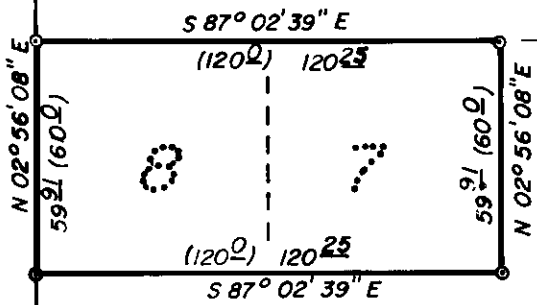
Fnd. 'X's On M.H. At Second Street & C Ave.

Found 5/8" Rebar 0.14 North & 0.34 West Of Recorded Position.

Fnd. 3/4" pipe

S 87° 02' 39" E  
 320<sup>49</sup> (320)

ST.  
 3rd



ORIGINAL TOWN OF LE GRAND

Found Unrecorded 1/2" Rebar

Surveyors Statement: new monuments were recovered on survey #49-76, thus changing the length of lots 8 & 9. Also a verticle circle columation was discovered in our theodolite, which severely affected our verticle angles for slope measurement. The new distances were measured with an E.D.M. Three of the original pins were recovered and removed, the fourth pin was missing. We replaced all pins with new 1/2" re-bar at the correct positions.

Fnd. concrete monument (disturbed)

799<sup>59</sup> N 89° 37' 18" E

7 8  
 18 17



BASIS OF BEARING  
 AS PUBLISHED BY U.S.C. & G.S.  
 FROM Δ COLLEGE TO Δ VALLEY.

REGISTERED PROFESSIONAL LAND SURVEYOR

Gregory T. Blackman

OREGON  
 JULY 13, 1973  
 GREGORY T. BLACKMAN  
 991

AMENDED SURVEY OF #6-75

CITY OF LA GRANDE	
City of La Grande	
ORIGINAL TOWN OF LE GRAND LOTS 7 & 8 of 3rd STREET	
SURVEYED FOR: CITY OF LA GRANDE	
SURVEYED BY: GREG BLACKMAN	
DRAWN BY: NORM PAULLUS	DATE: 2/14/77