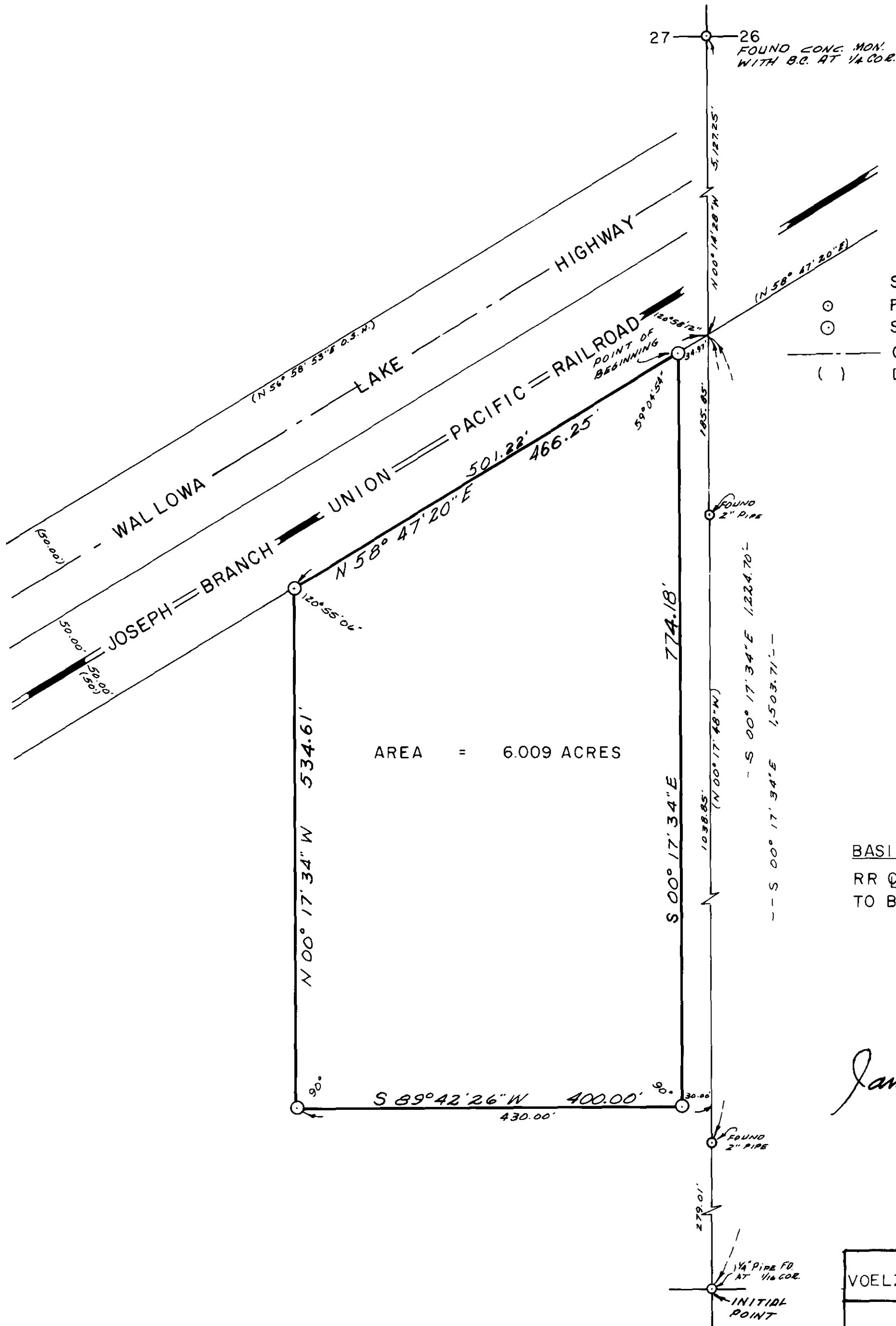


PLAT
of survey for
UNION COUNTY SOLID WASTE DISTRICT
UNION COUNTY COURT HOUSE
LA GRANDE, OREGON 97850
LOCATED IN THE E1/2 OF SECTION 34 T2S R38E W.M. UNION COUNTY, OREGON



AREA = 6.009 ACRES

LEGEND
SCALE 1" = 100'
○ Found monuments as indicated.
○ Set 5/8" X 30" steel rods.
--- Center line of Hwy r/w
() Data of record.

BASIS OF BEARINGS
RR ∇ ASSUMED
TO BE N58° 47' 0"E

James G. Voelz

SURVEYED BY VOELZ LAND SURVEYING, INC.	
SURVEYED FOR UNION COUNTY	
DATE DECEMBER 16, 1976	SCALE 1" = 100'