

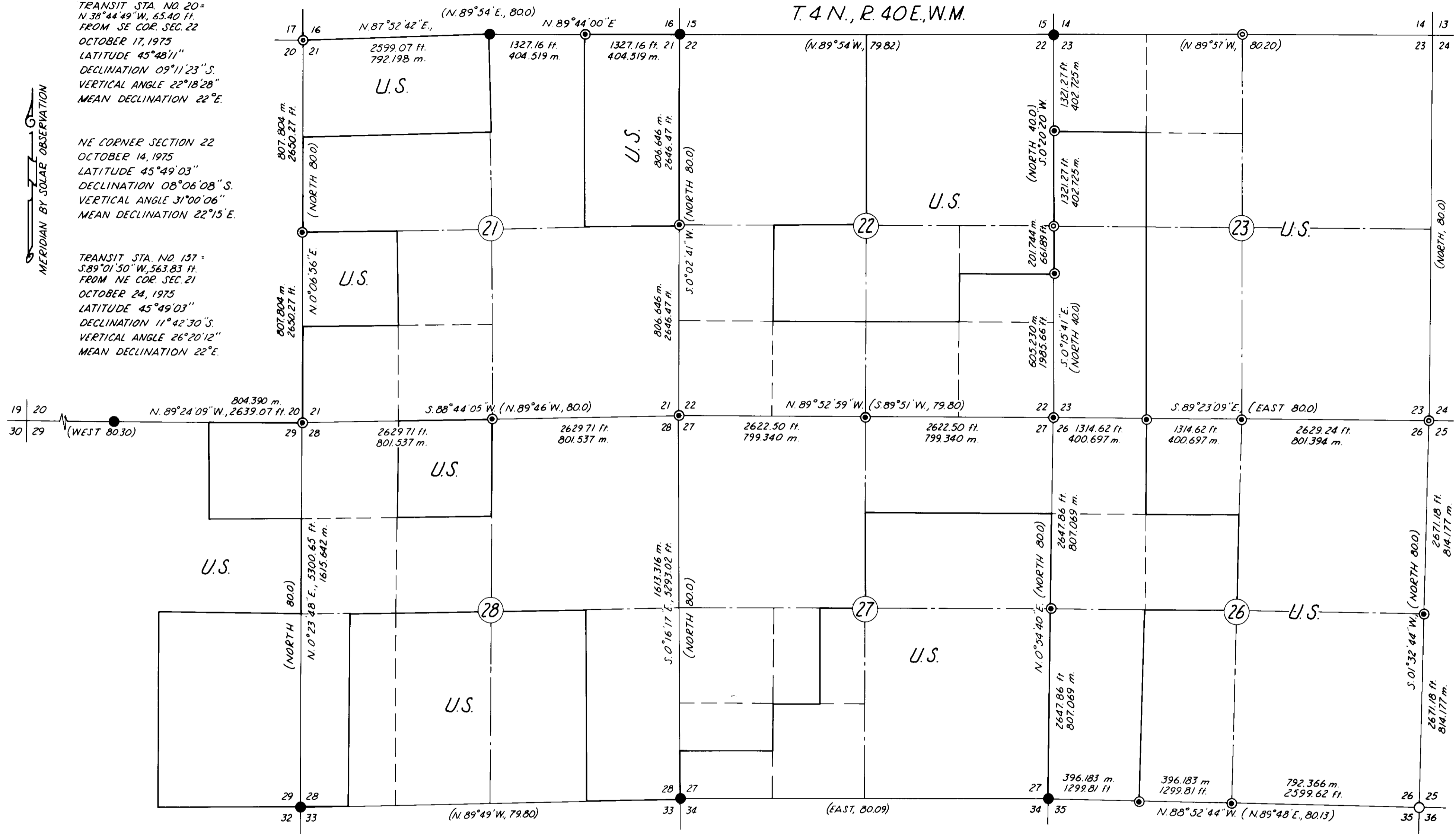
TRANSIT STA. NO. 20 =
 N. 38° 44' 49" W., 65.40 ft.
 FROM SE COR. SEC. 22
 OCTOBER 17, 1975
 LATITUDE 45° 48' 11" S.
 DECLINATION 09° 11' 23" S.
 VERTICAL ANGLE 22° 18' 28"
 MEAN DECLINATION 22° E.

NE CORNER SECTION 22
 OCTOBER 14, 1975
 LATITUDE 45° 49' 03" S.
 DECLINATION 08° 06' 08" S.
 VERTICAL ANGLE 31° 00' 06"
 MEAN DECLINATION 22° 15' E.

TRANSIT STA. NO. 157 =
 S. 89° 01' 50" W., 563.83 ft.
 FROM NE COR. SEC. 21
 OCTOBER 24, 1975
 LATITUDE 45° 49' 03" S.
 DECLINATION 11° 42' 30" S.
 VERTICAL ANGLE 26° 20' 12"
 MEAN DECLINATION 22° E.

MERIDIAN BY SOLAR OBSERVATION

T. 4 N., R. 40 E., W.M.



- LEGEND**
- FOUND BRASS CAP MONUMENT
 - FOUND G.L.O. CORNER; SET BRASS TABLET
 - ⊙ FOUND G.L.O. CORNER; SET 2 1/2" BRASS CAP ON 2" x 31" IRON PIPE
 - ⊙ SET 2 1/2" BRASS CAP ON 2" x 31" IRON PIPE AT PROPORTIONATE DISTANCE
 - () G.L.O. RECORD BEARING AND DISTANCE

NOTE:
 FOR MONUMENTATION RECORDS SEE
 MONUMENTATION SHEETS FILED
 SEPARATELY

ENGINEER'S STATEMENT
 I, JAMES D. HANLEY, A REGISTERED
 ENGINEER IN THE STATE OF OREGON, HEREBY
 CERTIFY THAT THIS PLAT AND THE NOTES
 HEREON, OR ATTACHED, ARE A CORRECT
 REPRESENTATION OF A SURVEY PERFORMED
 BY ME DURING OCTOBER, 1975, AND JUNE,
 1976, FOR THE U.S. FOREST SERVICE, IN
 ACCORDANCE WITH THE STATUTES OF THE
 STATE OF OREGON AND WITH THE ARTICLES
 OF MY CONTRACT.
 James D. Hanley
 P.R.E. 2808

DESCRIPTIONS OF U.S. GOVERNMENT LANDS

SECTION 21	SECTION 22	SECTION 23	SECTION 26	SECTION 27	SECTION 28
E 1/2 NE 1/4	ALL NE 1/4	ALL NE 1/4	ALL NE 1/4	S 1/2 NE 1/4	W 1/2 SE 1/4
NW 1/4 SW 1/4	N 1/2 NE 1/4 SE 1/4	ALL SE 1/4	ALL SE 1/4	ALL SE 1/4	E 1/2 SW 1/4
N 1/2 NW 1/4	NW 1/4 SE 1/4	E 1/2 SW 1/4	E 1/2 SW 1/4	E 1/2 NE 1/4 SW 1/4	E 1/2 W 1/2 SW 1/4
	NE 1/4 SW 1/4	E 1/2 NW 1/4	NE 1/4 NW 1/4	SE 1/4 SW 1/4	NE 1/4 NW 1/4
		NW 1/4 NW 1/4		S 1/2 SW 1/4 SW 1/4	

PLAT OF SURVEY
 FOR U.S. FOREST SERVICE
 CONTRACT NO. 004971N
 SCALE 1" = 1000 ft.
 OCT. 14, 1975 - JUNE 24, 1976



REFER TO NARRATIVE DRAWER 1/3

47-76

