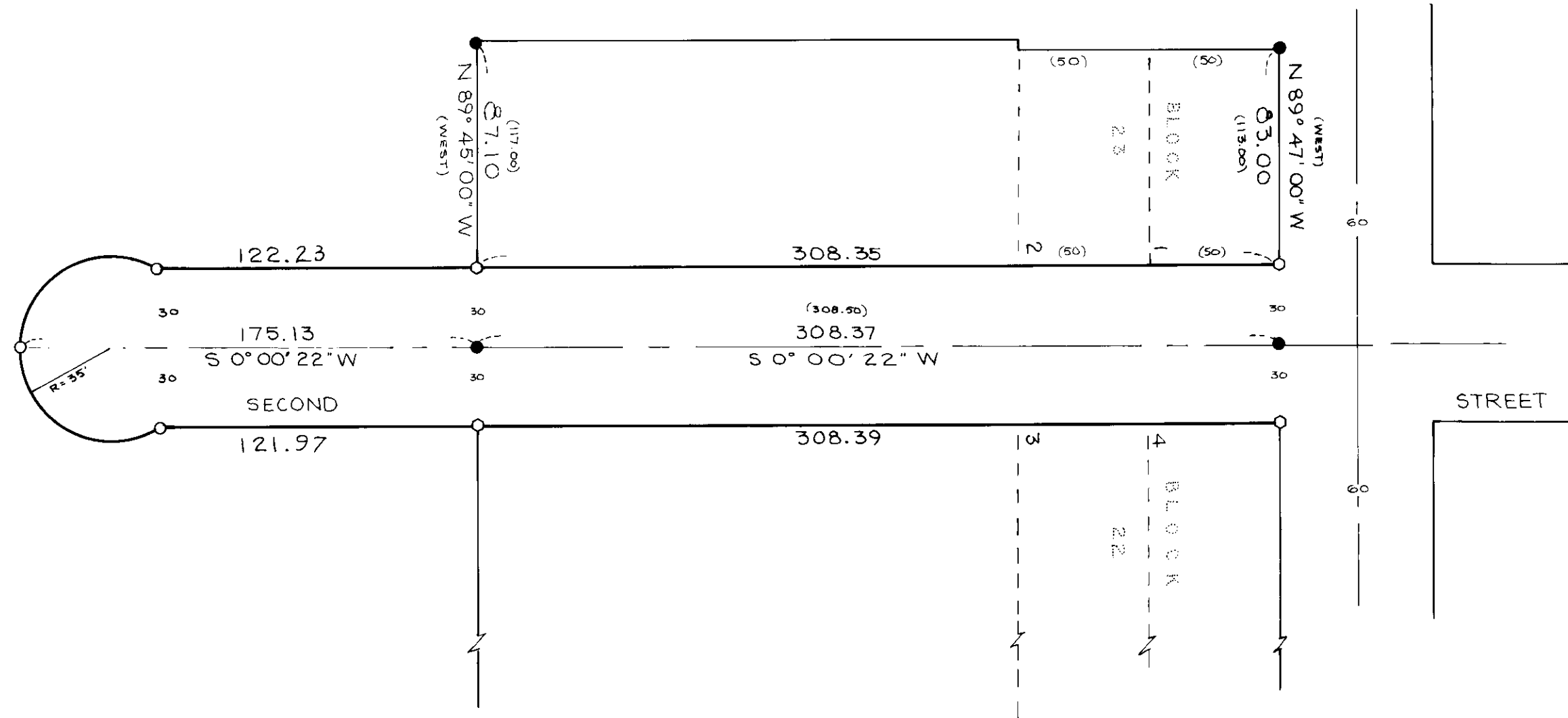




BASIS OF BEARING
SOLAR OBSERVATION



REFERENCE MATERIAL

MAP OF SURVEY FOR
REV. CLYDE DILLEY
DATED OCTOBER 23, 1975

LEGEND

- FOUND MONUMENT OF RECORD
- SET 5/8" x 30" IRON PIN WITH PLASTIC CAP MARKED B.G.A. SURVEY MARKER.
- SET 1/2" x 24" IRON PIN
- () RECORD BEARING AND DISTANCE

REGISTERED
PROFESSIONAL
LAND SURVEYOR

Duane J. Griffith

OREGON
JULY 10, 1966
DUANE J. GRIFFITH
644

BAGETT, GRIFFITH & ASSOCIATES La Grande, Oregon		
Map of Survey SECOND STREET EXTENTION IN SECTION 19, T4S, R40E, W.M. CITY OF UNION UNION COUNTY, OREGON		
SURVEYED FOR	RICHARD SOCHA	
SURVEYED BY	D. I. G.	JUN. 1976
Scale: 1" = 50'	Drawn by: t.d.g.	JUN. 1976

41-76