

PLAT
of survey for
LANDURA CORPORATION
1359 PACIFIC HIGHWAY
WOODBURN, OREGON, 97071

LEGAL DESCRIPTION

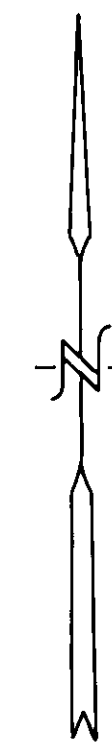
Beginning at the Southeast corner of Lot 6 of Block 8 of HOME INVESTMENT ADDITION to La Grande, Union County, Oregon;
Thence N 00° 13' 36" W along the East line of Block 8, a distance of 390.00 feet to the Northeast corner of Lot 1 of said Block 8;
Thence S 89° 46' 00" W along the North line of Block 8, a distance of 335.10 feet;
Thence S 00° 13' 36" E, a distance of 390.00 feet to the South line of Lot 5 of said Block 8;
Thence N 89° 46' 00" E along the South line of Block 8, a distance of 335.10 feet to the POINT OF BEGINNING.
Being all of Lots 1 and 6, and a portion of Lots 2 and 5 of HOME INVESTMENT ADDITION, T3S R38E WM, Section 4.

NOTED FEATURES

- STREETS and AVENUES**—Asphalt surface on Cove Avenue and Albany Street. Gravel surface on Watson Street. Prospect Avenue is not open to traffic, portions are fenced as shown, balance is under cultivation.
- WATER MAIN**—An 18" City of La Grande, water line is located along the West line of Albany Street.
- POWER LINES**—Line of Power Poles as shown carries 69,000 volts, top line and 4,160 volts bottom line. Any "standard voltage" desired is available.
- SEWER LINE**—City of La Grande sewer line is located in Cove Avenue as shown by line of manhole covers.
- CABELVISION LINE**—Cabelvision line located in Watson Street.
- EASEMENTS**—No easements found within property boundaries.
- PROMINENT FEATURES**—There are no streams, large trees or buildings located on this property. Pole fence is located along West line as shown.

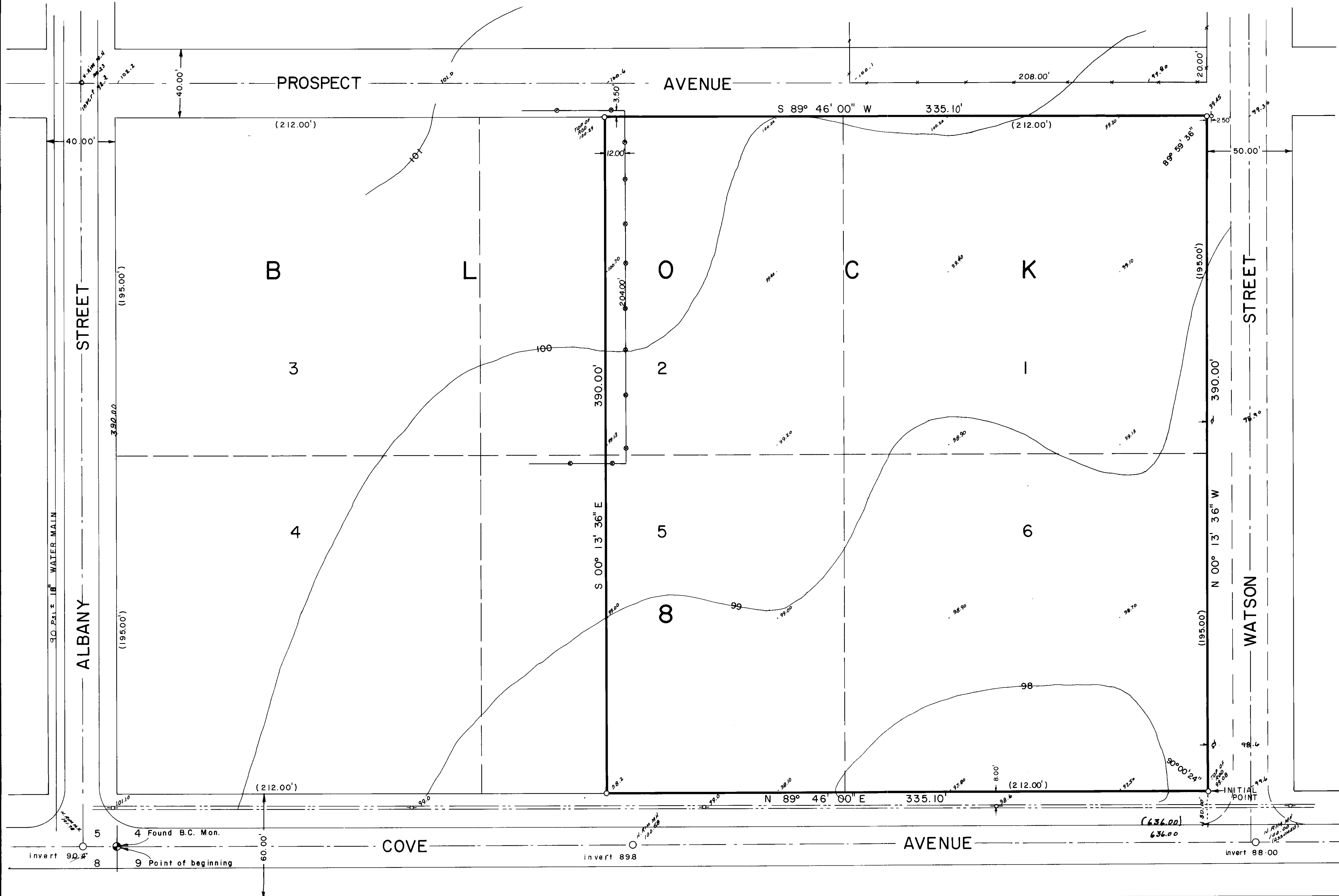
LEGEND

- ⊙ Found Brass Cap monument.
- Set 5/8" X 30" steel rods.
- Center line of streets.
- () Data of record.
- Fences.
- Pole fences.
- High voltage power line.
- Cabelvision poles.
- Manhole covers.



BASIS OF BEARINGS
Based on C of Cove Avenue being N 89° 46' 00" E.

REGISTERED
PROFESSIONAL
LAND SURVEYOR
James W. Doherty
OREGON
JAMES W. DOHERTY
1961



SURVEYED BY VOELZ LAND SURVEYING, INC.	
SURVEYED FOR LANDURA CORPORATION	
DATE APRIL 6, 1976	SCALE 1" = 30'

36-76