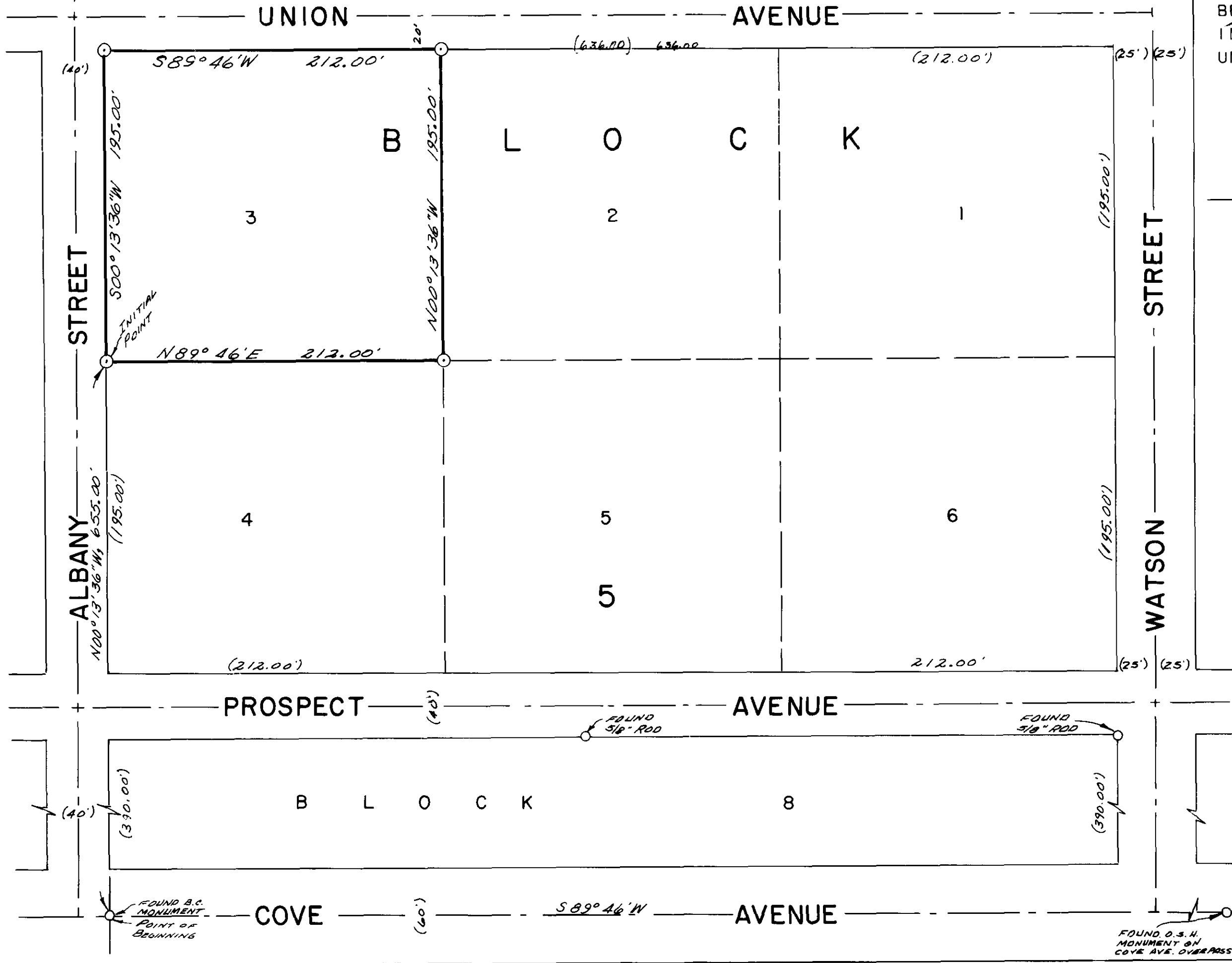
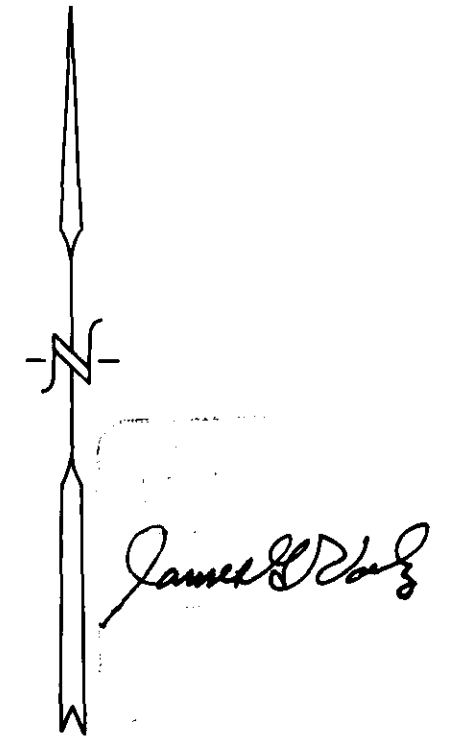


PLAT  
of survey for  
**PLAZA MOBILE HOMES**  
LA GRANDE, OREGON, 97850



BEING LOT 3 BLOCK 5 OF HOME INVESTMENT ADDITION, LA GRANDE, UNION COUNTY, OREGON.

- LEGEND  
SCALE 1" = 60'
- Found monuments as indicated.
  - ⊙ Set 5/8" X 30" steel rods.
  - Center line of streets.
  - ( ) Data of record.



**BASIS OF BEARINGS**  
Based on C of COVE AVE. being S 89° 46' W.

SURVEYED BY VOELZ LAND SURVEYING, INC.	
SURVEYED FOR PLAZA MOBILE HOMES	
DATE APRIL 27, 1976	SCALE 1" = 60'

35.76