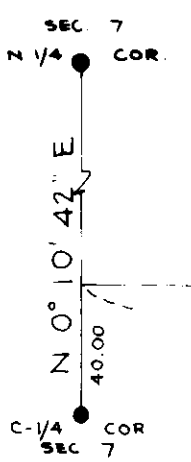
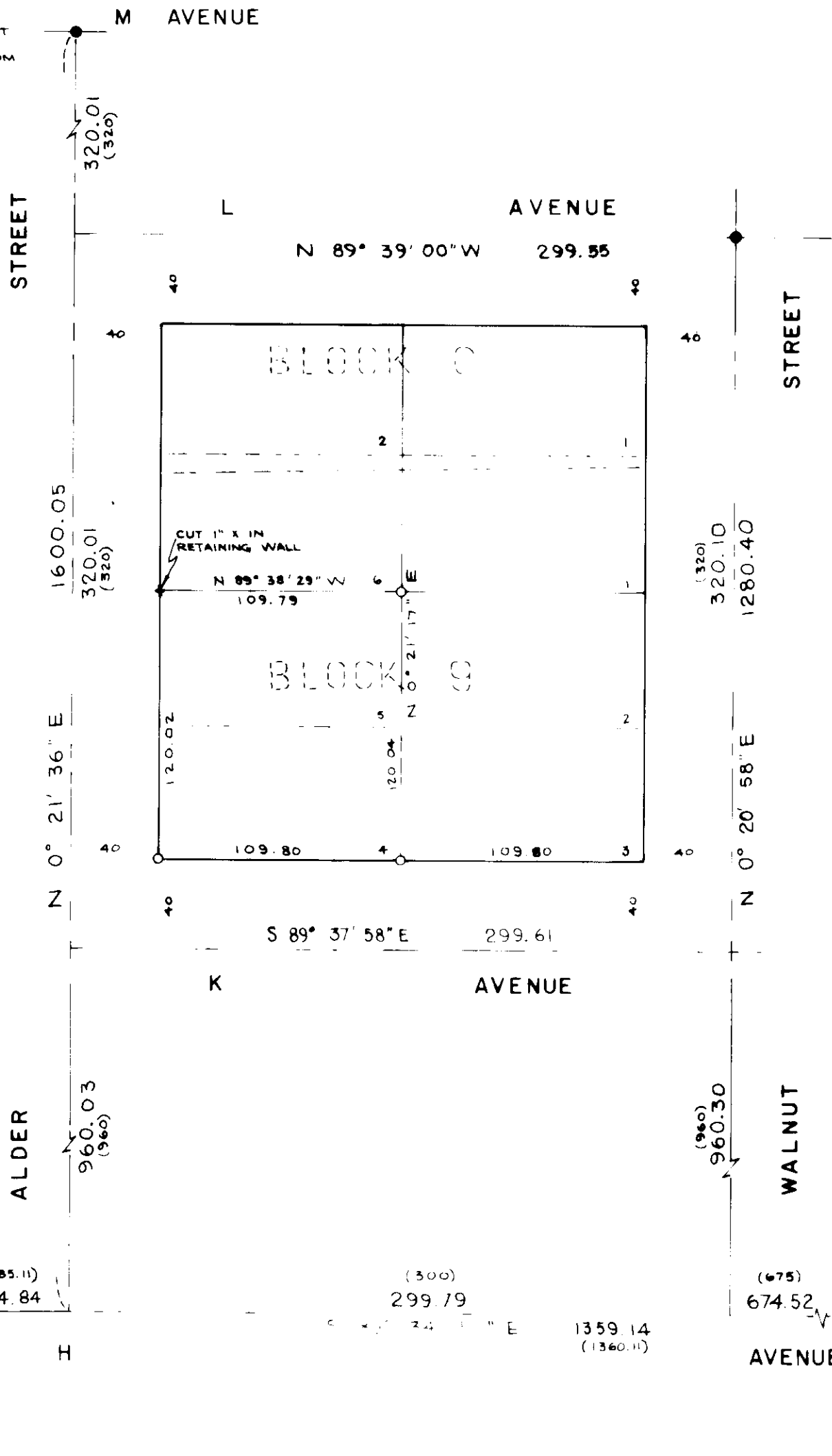


FOUND 3/4" PIPE BENT
SET 1/2" x 24" IRON
PIPE TO SURFACE FROM
BEND



BASIS OF BEARING
FORWARD BEARING AS PUBLISHED
BY U.S.C. & G.S. FROM A COLLEGE
TO A VALLEY

REFERENCE MATERIAL

CITY SURVEY MAP OF 1922.
MAP OF SURVEY NO. 120
MAP OF SURVEY NO. 18-76

LEGEND

- FOUND MONUMENT OF RECORD
- SET 1/2" x 24" IRON PIN
- RECORD BEARING & DISTANCE

REGISTERED
**PROFESSIONAL
LAND SURVEYOR**

OREGON
JULY 10, 1954
DUANE I. GRIFFITH
644

BAGETT, GRIFFITH & ASSOCIATES		
La Grande, Oregon		
Map of Survey		
LOTS 4 & 5, BLOCK 9		
DEAL'S ADDITION		
TO LA GRANDE		
UNION COUNTY, OREGON		
SURVEYED FOR	WARD W. HEIM	
SURVEYED BY	D. I. G.	MAY, 1976
Scale: 1" = 60'	Drawn by: T.D.G.	MAY, 1976

201-76