



BASIS OF BEARING

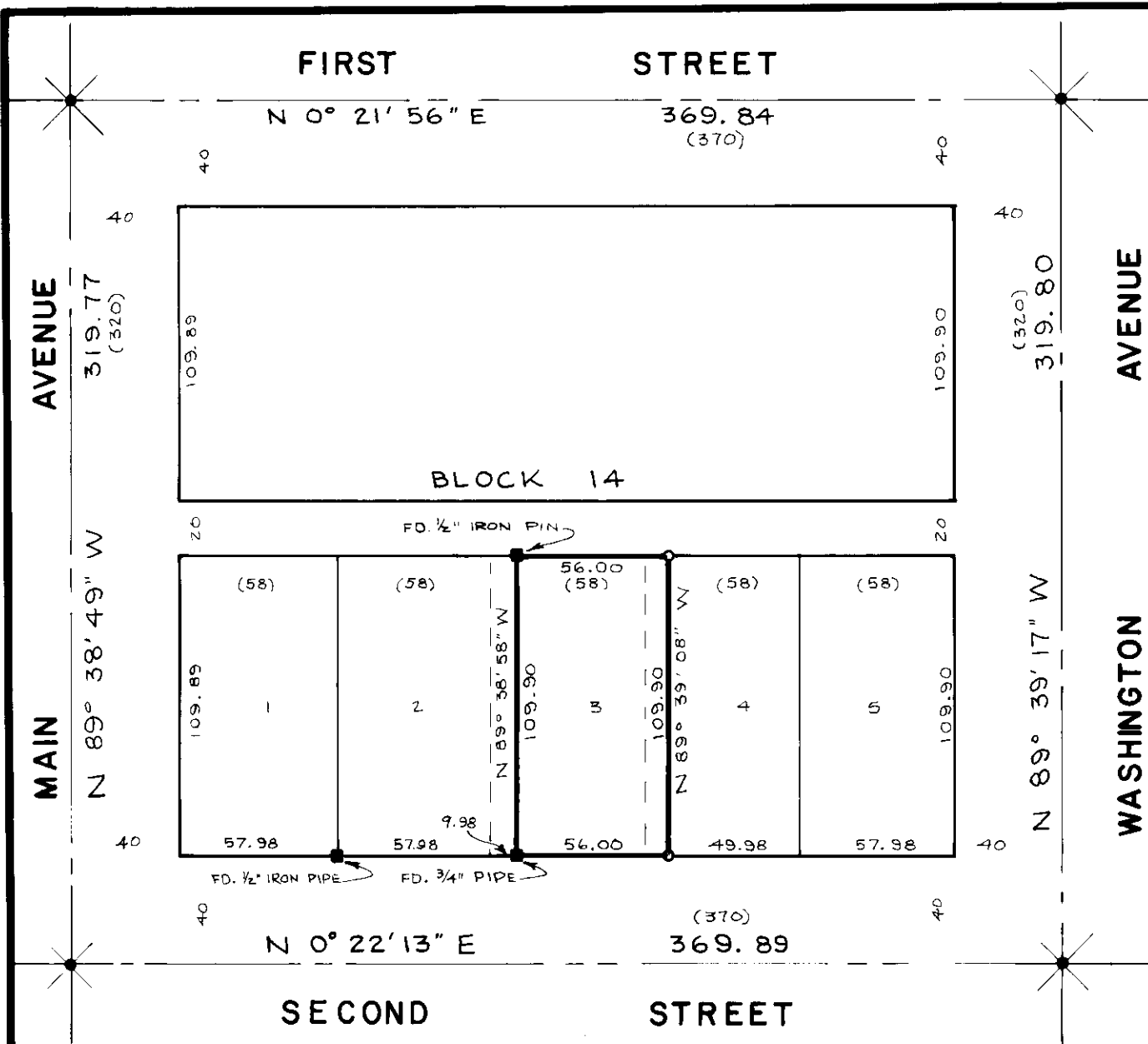
MAP OF SURVEY 23-73

REFERENCE MATERIAL

SURVEY OF LA GRANDE IN 1922

LEGEND

- FOUND NAIL AND BRASS SCREWS IN LEAD PLUG IN CURBS
- FOUND UNRECORDED MONUMENT AS SHOWN
- SET 1/2" x 24" IRON PIN
- () RECORD BEARING AND DISTANCE



REGISTERED
**PROFESSIONAL
 LAND SURVEYOR**

Handwritten signature

OREGON
 JULY 10, 1904
**DUANE I. GRIFFITH
 644**

BAGETT, GRIFFITH & ASSOCIATES La Grande, Oregon		
Map of Survey		
LOTS 3&4 OF BLOCK 14 GRANDY'S ADDITION LA GRANDE UNION COUNTY, OREGON		
SURVEYED FOR	HAL SCHNELL	
SURVEYED BY	D. I. G.	3 - 1976
Scale: 1" = 60'	Drawn by: t d g	3 - 1976

15.76