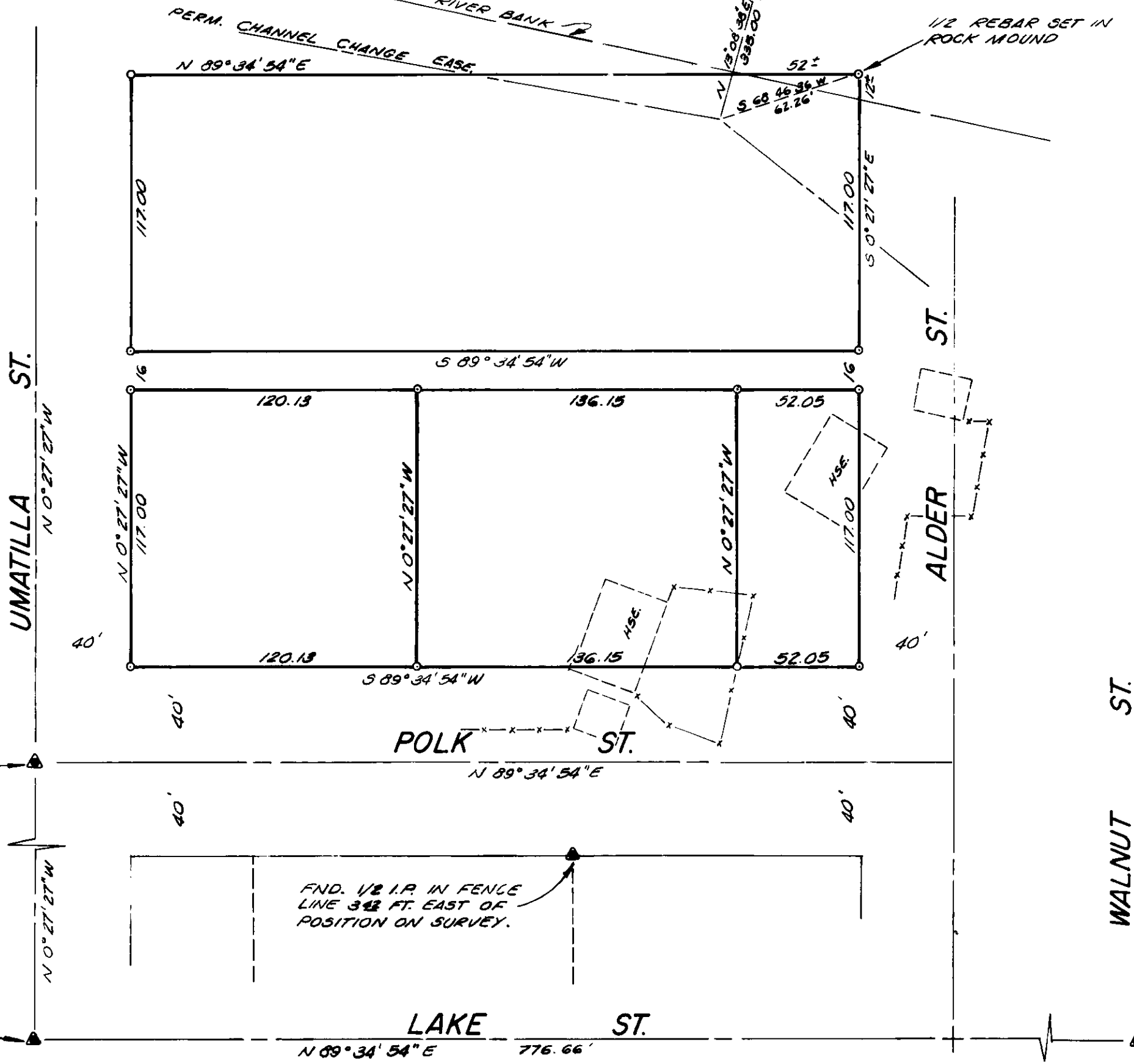


FND. BRASS PLAQUE
IN CATCH BASIN, E.B.
75+02, PT. 65.00
OFFSET STAMPED IN TOP

FND. 5/8 PIN & PADDLEBOARD W/O.S.H.R.W.
STA. E.B. 75+02.09 PT. 205.00 OFFSET
PAINTED ON PADDLE BOARD.



BASIS OF BEARING
SOLAR OBSERVATION & OF N. UMATILLA ST.
BETWEEN POLK & LAKE STREET APRIL 2, 1976.

SURVEY REFERENCES
1922 RESURVEY OF THE CITY OF LA GRANDE
28-63 REG. SURVEY
O.S.H.D. DRWG NO. 88-36-3

REGISTERED
PROFESSIONAL
LAND SURVEYOR

Gregory T. Blackman

OREGON
JULY 13, 1973
GREGORY T. BLACKMAN
991

LEGEND
○ SET 1/2 REBAR
▲ FOUND MON. OF RECORD

SURVEYED FOR - OREN WALKER LOTS 12, 13, 14, 15 - BLOCK 54 RIVERSIDE ADDITION	
SURVEYED BY: GREGORY T. BLACKMAN	
DRAWN BY: DAN L. CHEVALIER	
SCALE: 1" = 50'	DATE: 4-8-76

FND. CONC. MON. DISTURBED
RESET ORIG. POSITION BY TIES.