

FOUND 3/4" PIPE
SEE SURVEY
NO. 5-75

15 TH AVE

30
30

(N 89° 34' W)
N 89° 16' 37" W

BIRCH

C 1/14

ALDER

ST. 259.84

11 TH AVE

N 89° 43' 20" W

SURVEY
NO. 13-72

N 89° 42' 47" W

STREET

FOUND 3/4" PIPE
0.5 SOUTH



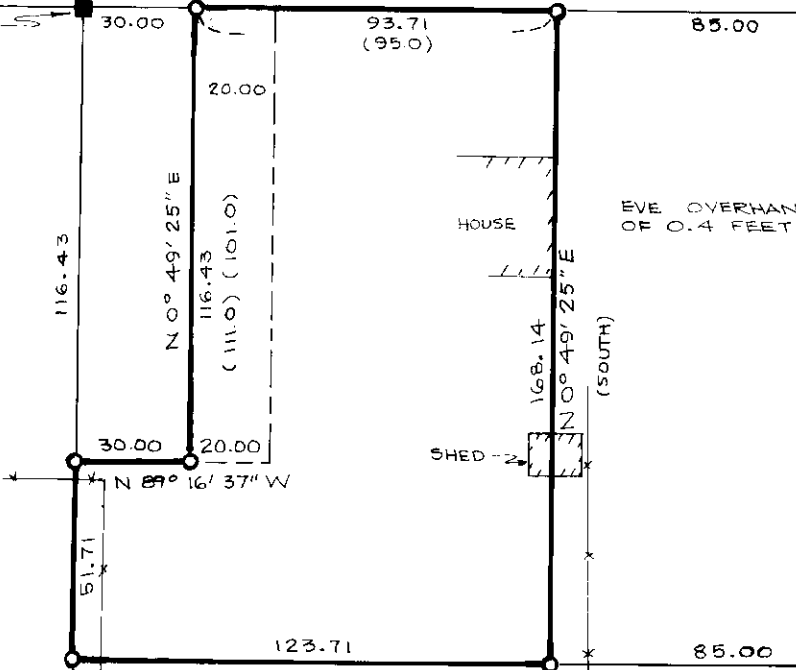
BASIS OF BEARING

SURVEY NO. 31-72

LEGEND

- FOUND MONUMENT OF RECORD
- SET 5/8" x 30" IRON PIN
- FOUND UNRECORDED MONUMENT
- () RECORD BEARING AND DISTANCE

(S 0° 34' W)
N 0° 49' 25" E



2763.04

BLOCK 74
HINDMAN'S
ADDITION

N 0° 49' 25" E
(NORTH)

AVENUE

S 0° 16' 43" W

TWELFTH

FOUND NAIL
I DID NOT OPEN STREET
TO LEAD PLUG CALLED FOR

REFERENCE MATERIAL

- MAP OF SURVEY NO. 31-72
- MAP OF SURVEY NO. 28-73
- MAP OF SURVEY NO. 46-74
- MAP OF SURVEY NO. 36-75
- MAP OF SURVEY NO. 5-75

- DEEDS: 129-394
138-646
149-183
149-184
MF 41176
42362
43042

REGISTERED
PROFESSIONAL
LAND SURVEYOR

Duane I. Griffith

OREGON
JULY 10, 1963
DUANE I. GRIFFITH
644

BAGETT, GRIFFITH & ASSOCIATES

La Grande, Oregon

Map of Survey
PARCEL IN THE NE 1/4 OF THE SW 1/4
SECTION 15, T 1 N, R 39 E, W.M.

ELGIN
UNION COUNTY, OREGON

SURVEYED FOR	JIM LYONS	
SURVEYED BY	DUANE I. GRIFFITH	JAN. 1976
Scale: 1" = 50'	Drawn by: T.D.G.	JAN. 1976

SECTION 15
SECTION 22

C-S 1/16 CORNER

S 1/4 CORNER

CEDAR

ST.

156.58

208.71

1981.52

168.14

30

30

30

788.09

320.02

320.02

320.02

320.02

30

30

30

30

30

30

30

30

156.58

208.71

1981.52

168.14

30

30

30

788.09

320.02

320.02

320.02

320.02

30

30

30

30

30

30

30

30

156.58

208.71

1981.52

168.14

30

30

30

788.09

320.02

320.02

320.02

320.02

30

30

30

30

30

30

30

30

156.58

208.71

1981.52

168.14

30

30

30

788.09

320.02

320.02

320.02

320.02

30

30

30

30

30

30

30

30

156.58

208.71

1981.52

168.14

30

30

30

788.09

320.02

320.02

320.02

320.02

30

30

30

30

30

30

30

30

156.58

208.71

1981.52

168.14

30

30

30

788.09

320.02

320.02

320.02

320.02

30

30

30

30

30

30

30

30

156.58

208.71

1981.52

168.14

30

30

30

788.09

320.02

320.02

320.02

320.02

30

30

30

30

30

30

30

30

156.58

208.71

1981.52

168.14

30

30

30

788.09

320.02

320.02

320.02

320.02

30

30

30

30

30

30

30

30

156.58

208.71

1981.52

168.14

30

30

30

788.09

320.02

320.02

320.02

320.02

30

30

30

30

30

30

30

30

156.58

208.71

1981.52

168.14

30

30

30

788.09

320.02

320.02

320.02

320.02

30

30

30

30

30

30

30

30

156.58

208.71

1981.52

168.14

30

30

30

788.09

320.02

320.02

320.02

320.02

30

30

30

30

30

30

30

30

156.58

208.71

1981.52

168.14

30

30

30

788.09

320.02

320.02

320.02

320.02

30

30

30

30

30

30

30

30

156.58

208.71