

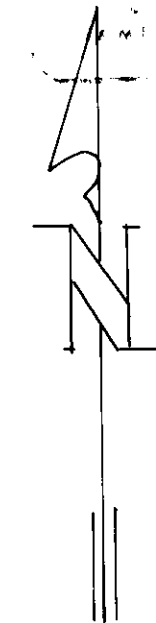
PLAT
of survey for
JAMES LLOYD WELCH

2nd. & IOWA STREETS
UNION, OREGON

LOCATION OF LOT LINE BETWEEN LOTS 2 & 3 AND LOTS 7 & 8 OF
BLOCK 19, HANNAH'S ADDITION TO UNION, UNION COUNTY, OREGON

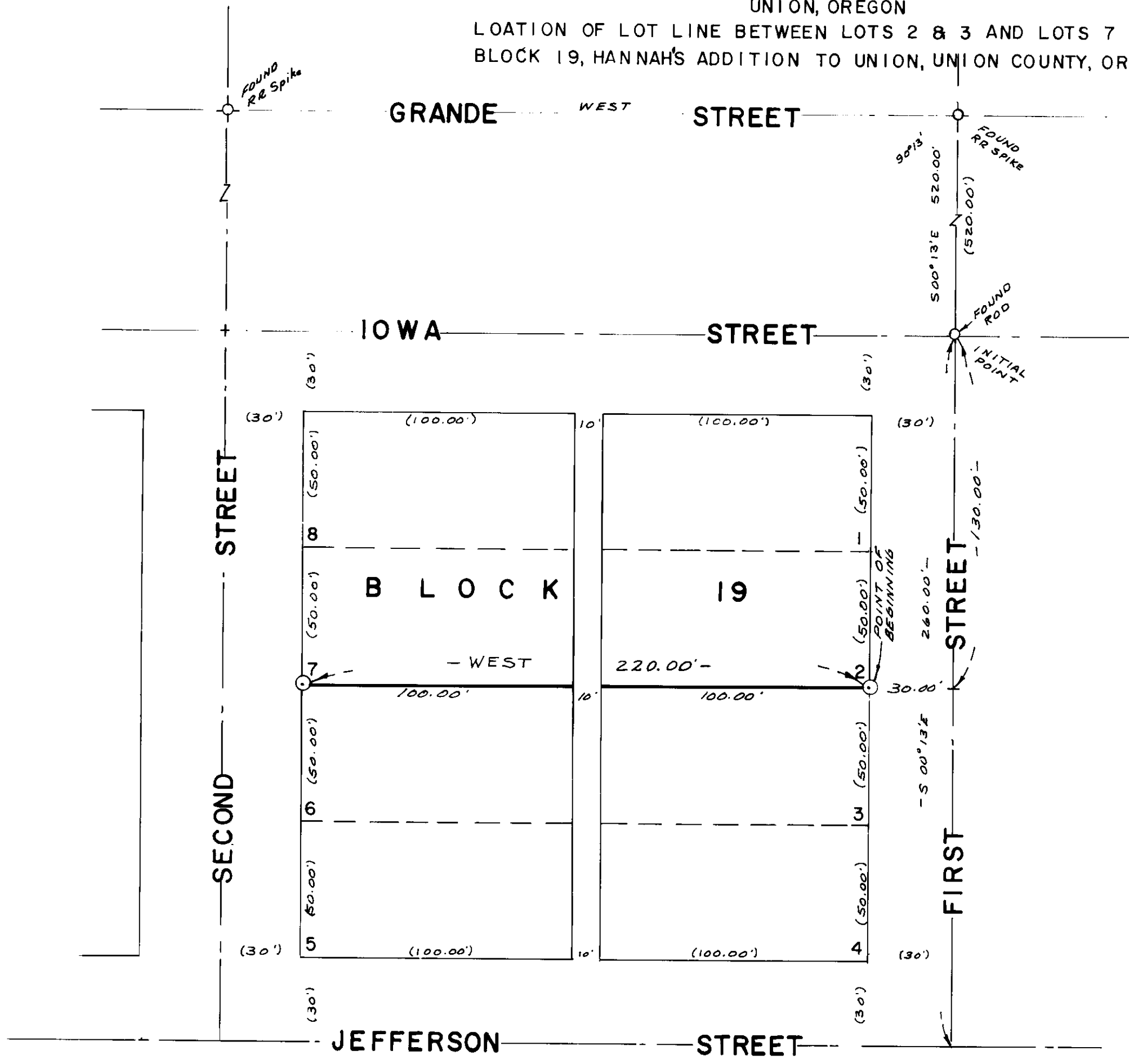
- LEGEND
SCALE 1" = 40'
- Found monuments as indicated.
 - ⊙ Set 5/8" X 30" steel rods.
 - Center line of streets.
 - () Data of record.

REGISTERED
PROFESSIONAL
LAND SURVEYOR
James L. Voelz
OREGON



BASIS OF BEARINGS
BASED ON C_L OF
GRANDE STREET
BEING WEST

SURVEYED BY VOELZ LAND SURVEYING, INC.	
SURVEYED FOR JAMES LLOYD WELCH	
DATE OCTOBER 23, 1975	SCALE 1" = 40'



69-75