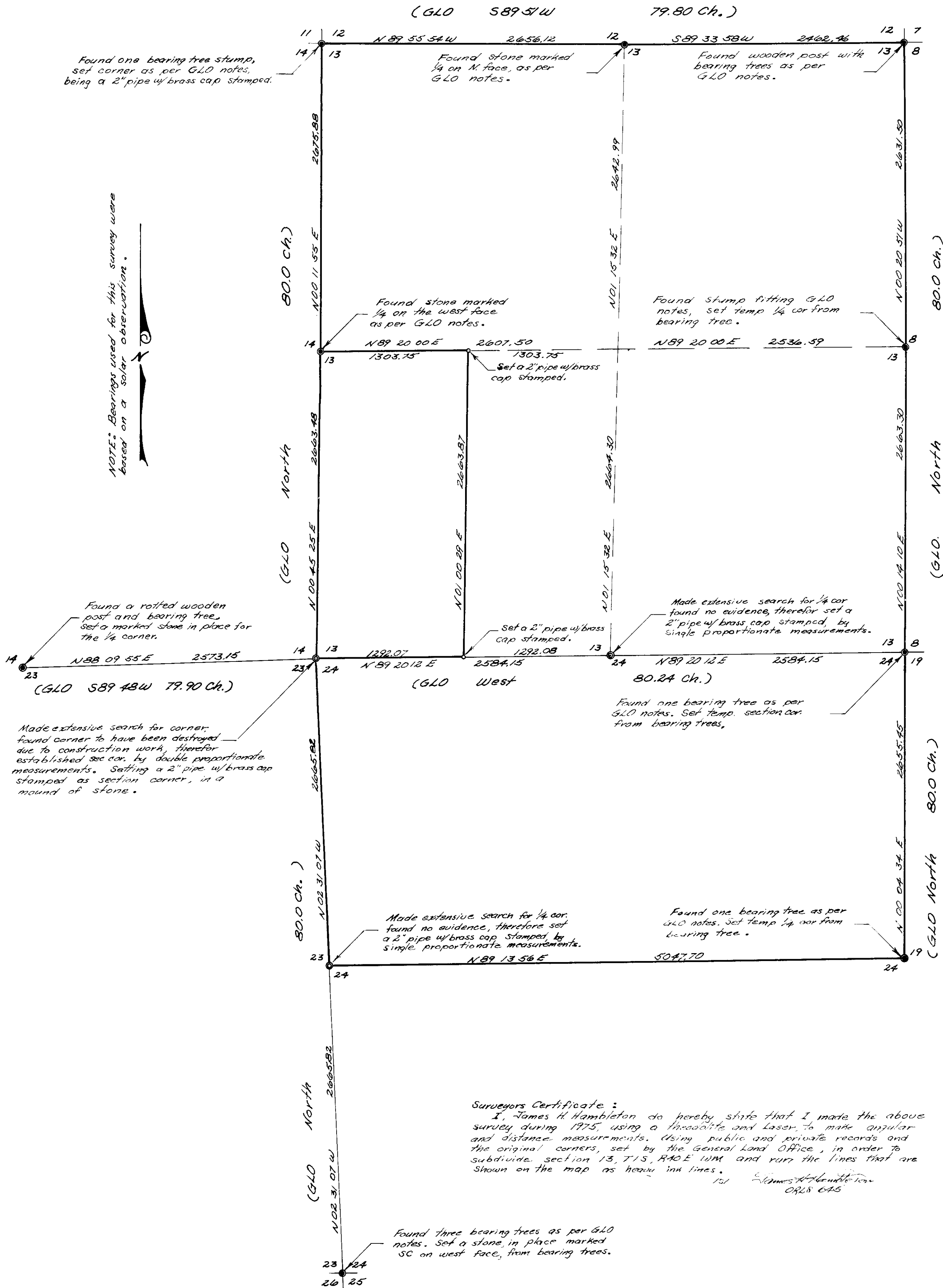


SURVEY of SECTION 13, T1S, R40E W.M. UNION COUNTY OREGON

Scale 1" = 600'

Date 9-4-75



Surveyors Certificate:
 I, James H. Hambleton do hereby state that I made the above survey during 1975, using a theodolite and Laser, to make angular and distance measurements. Using public and private records and the original corners, set by the General Land Office, in order to subdivide section 13, T1S, R40E W.M. and run the lines that are shown on the map as heavy ink lines.
 J. H. Hambleton
 O.R.S. 645

REGISTERED
 PROFESSIONAL
 LAND SURVEYOR

OREGON
 JULY 11, 1963
 JAMES H. HAMBLETON
 645

34-75