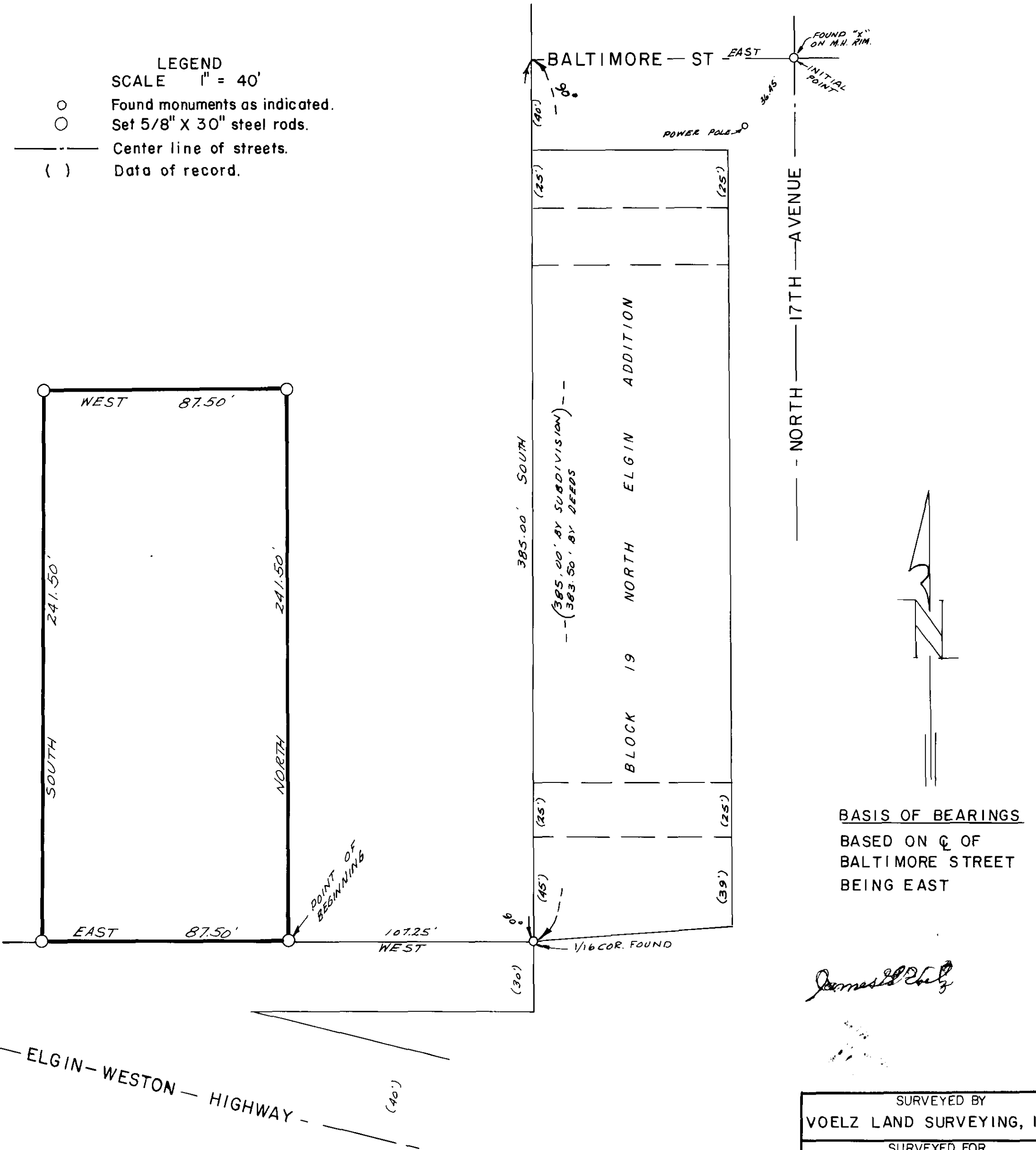


PLAT
of survey for
SAM HORRELL
ELGIN, OREGON
LOCATED IN THE SW1/4 NW1/4 OF SEC 15, T1N R39E WM.

LEGEND
SCALE 1" = 40'

- Found monuments as indicated.
- Set 5/8" X 30" steel rods.
- Center line of streets.
- () Data of record.



SURVEYED BY VOELZ LAND SURVEYING, INC.	
SURVEYED FOR SAM HORRELL	
DATE APRIL 26, 1975	SCALE 1" = 40'

37.75