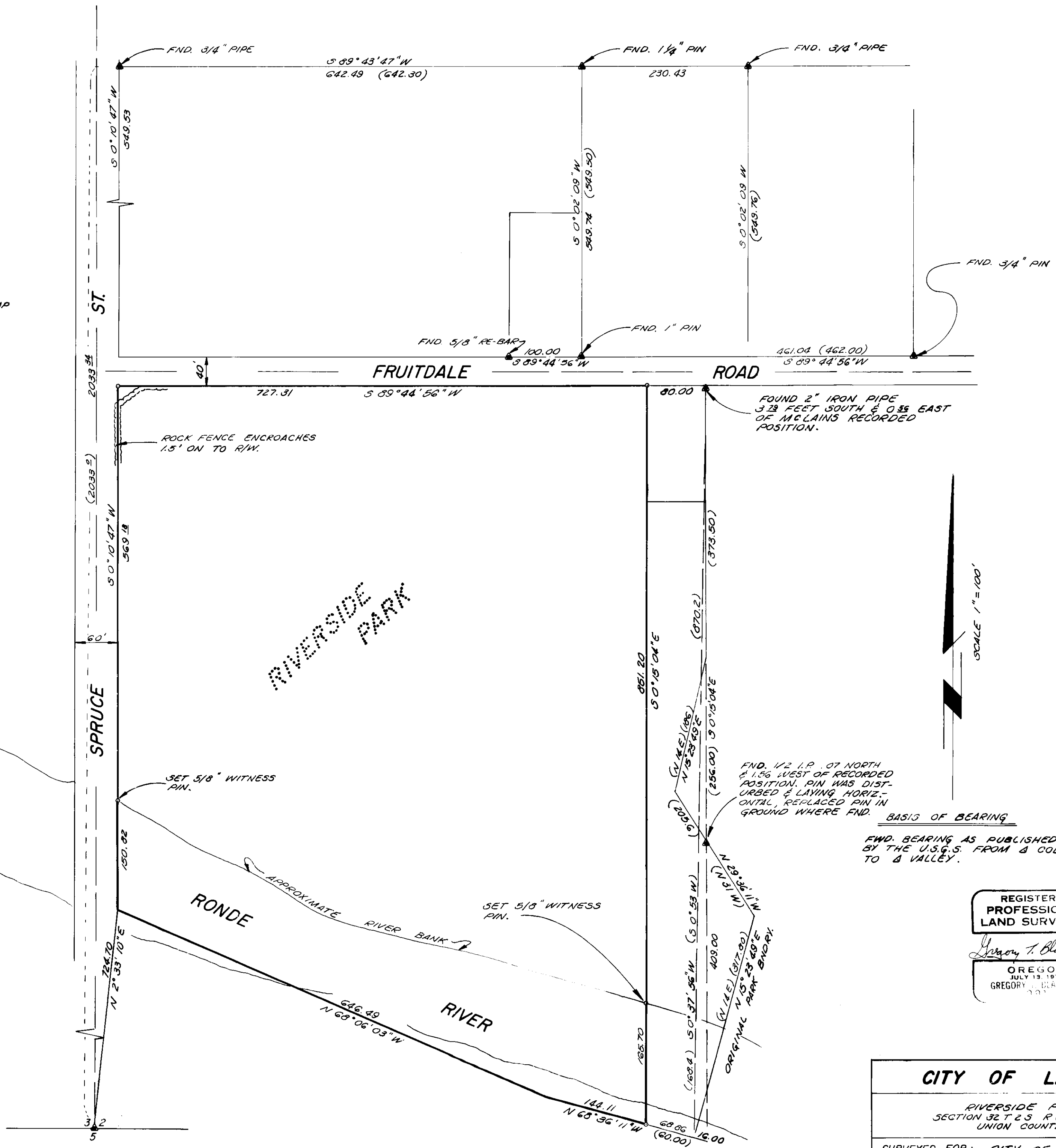


REFERENCE MATERIAL
 CITY OF LA GRANDE RE-MONUMENTATION 1922 MAP
 SURVEY # 16
 3-66
 18-74
 18-75

NOTE:
 COUNTY SURVEYOR CONFIRMED VERBALLY
 THAT FRUITDALE ROAD IS A 40' R/W.

LEGEND
 ○ SET 5/8" RE-BAR
 ● FOUND UNRECORDED PINS
 ▲ MONUMENT OF RECORDS
 () RECORDED DISTANCE



FOUND 2" IRON PIPE
 3.28 FEET SOUTH & 0.35 EAST
 OF MCLAINS RECORDED
 POSITION.

FND. 1/2 I.P. .07 NORTH
 & 1.56 WEST OF RECORDED
 POSITION. PIN WAS DISTURBED
 & LAYING HORIZONTAL, REPLACED
 PIN IN GROUND WHERE FND. BASIS OF BEARING

FND. BEARING AS PUBLISHED
 BY THE U.S.G.S. FROM A COLLEGE
 TO A VALLEY.

SCALE 1" = 100'

REGISTERED
 PROFESSIONAL
 LAND SURVEYOR

Gregory T. Blackman

OREGON
 JULY 13, 1973
 GREGORY T. BLACKMAN

CITY OF LA GRANDE	
RIVERSIDE PARK SECTION 32 T 2 S R 30 E W.M. UNION COUNTY	
SURVEYED FOR: CITY OF LA GRANDE	
SURVEYED BY: GREGORY T. BLACKMAN	
DRAWN BY: DAN L. CHEVALIER	DATE: 5/22/75