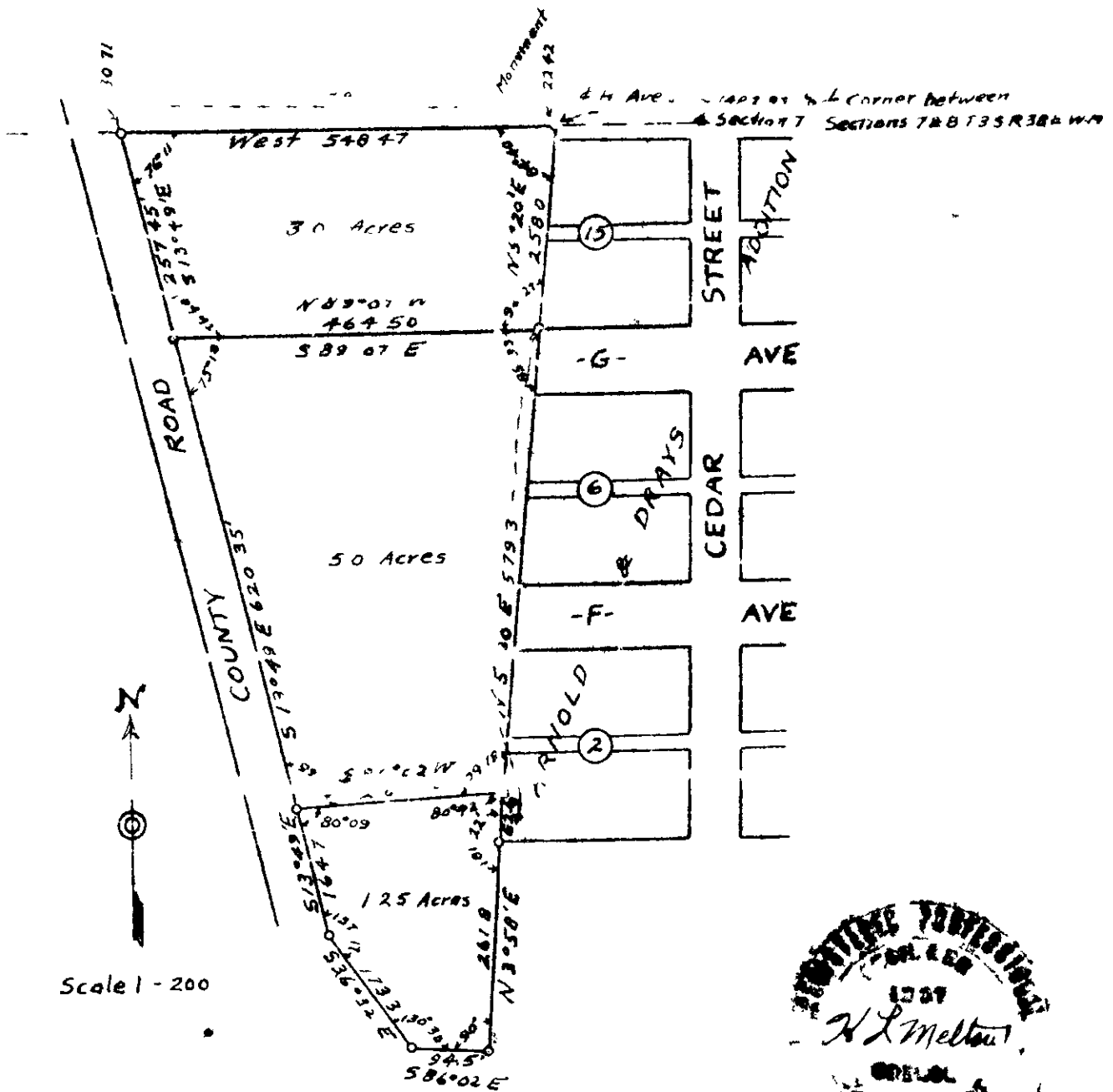


SUBDIVIDED

TRACT OF LAND

West of Arnold & Drays Addition To Lo Grande, Oregon
PART OF NW 1/4 SE 1/4 SEC 7 T 3S, R 38E



I, H L Melton registered Professional of Oregon No 1337
do hereby certify that this map was made from the field
notes of an actual survey made by me on Aug 15 to 17 1947
and correctly represents the land as shown

H L Melton
ENGINEER

19-75