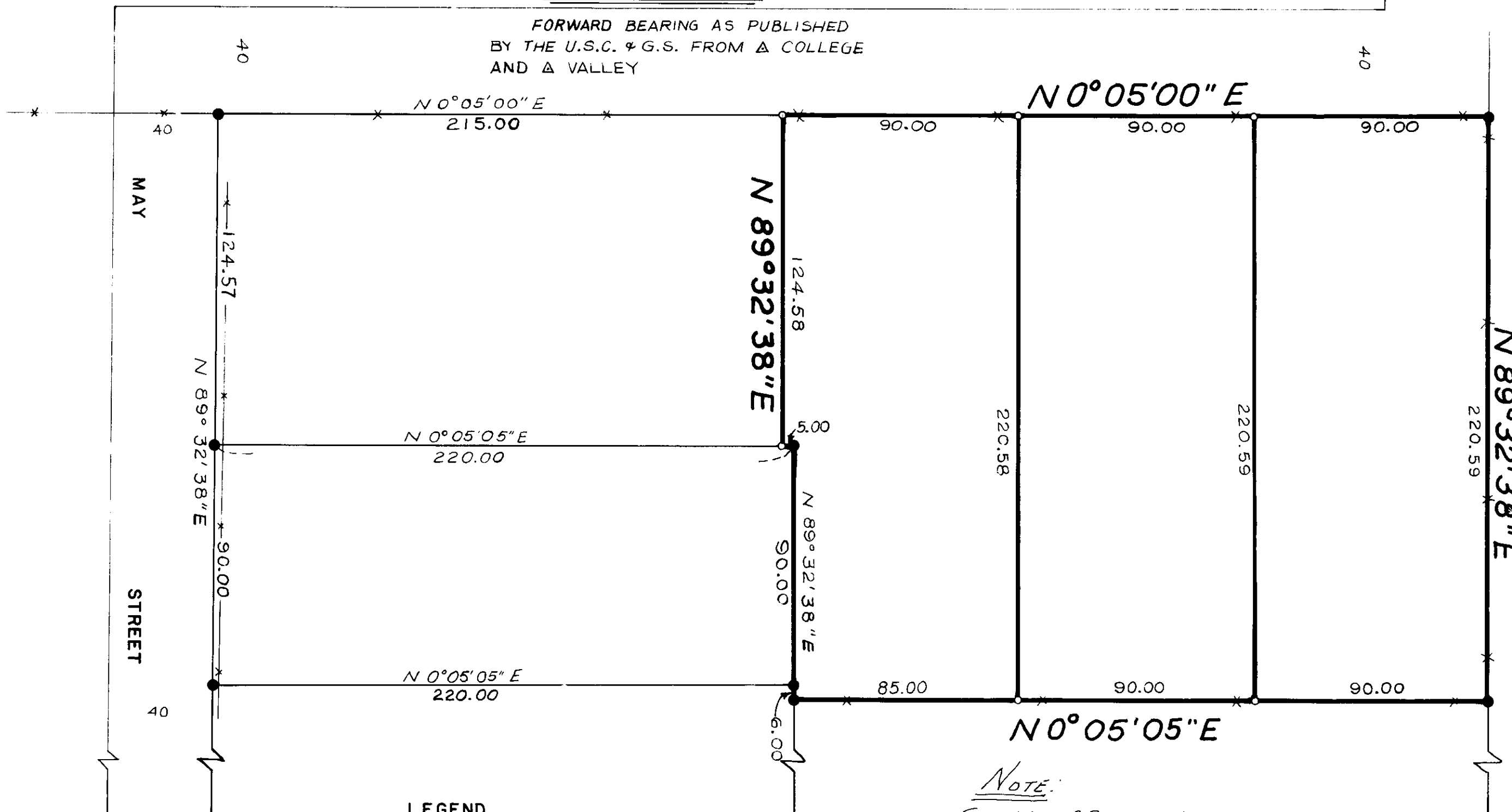


**BASIS OF BEARING**

FORWARD BEARING AS PUBLISHED  
BY THE U.S.C. & G.S. FROM Δ COLLEGE  
AND Δ VALLEY



**LEGEND**

- FOUND MONUMENT OF RECORD (SURVEY #68-13)
- SET 5/8" x 30" IRON PIN
- ↔ EXISTING FENCE

*NOTE:*  
SEE MAP OF SURVEY No. 18-77  
FOR CORRECTION!

REGISTERED  
PROFESSIONAL  
LAND SURVEYOR

*Duane I. Griffith*

OREGON  
JULY 10, 1964  
DUANE I. GRIFFITH  
644

<b>BAGETT, GRIFFITH &amp; ASSOCIATES</b>		
La Grande, Oregon		
Map of Survey		
PORTION OF LOT 14		
MAY PARK		
UNION COUNTY, OREGON		
SURVEYED FOR	S. C. LYONS	
SURVEYED BY	DUANE I. GRIFFITH 5-1975	
Scale: 1" = 40'	Drawn by: T.D.G.	5-1975

14-75