

"B" AVE.

FND. X'S ON M.H. @ 2nd STREET & C AVE.

FND. 5/8" REBAR. .14 NORTH & .34 WEST OF RECORDED POSITION

S 87° 01' 55" E

320.2

320.2
N 2° 57' 35" E

STREET

SECOND

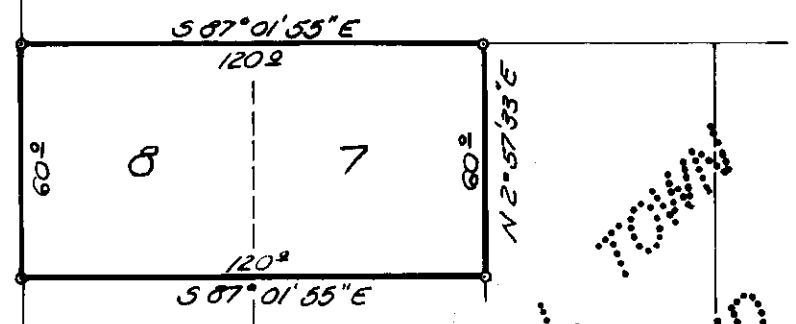
461.65
N 2° 57' 35" E

REFERENCE MATERIAL
CITY MONUMENTATION MAP 1922
SURVEY # 37 - 65
38 - 67
64 - 70
65 - 70
35 - 73

FND. 3/4" PIPE

"A" 290.25 (290.2) AVE.
N 87° 00' 47" W

FOUND RECORDED 5/8 REBAR. .47 SOUTH & .27 WEST OF RECORDED POSITION



ORIGINAL TOWN OF LE GRANDE

FND. UNRECORDED 1/2" REBAR

805.35 (805.20)
N 89° 38' 35" E

7 8
18 17

FND. 5/8" REBAR SET IN CONCRETE.

- LEGEND
- SET 1/2" RE-BAR
 - FOUND UNRECORDED PINS
 - ▲ MONUMENT OF RECORDS
 - () RECORDED DISTANCE

SCALE 1" = 50'

BASIS OF BEARING
AS PUBLISHED BY U.S.C. & G.S.
FROM A COLLEGE TO A VALLEY.

REGISTERED
PROFESSIONAL
LAND SURVEYOR

Gregory T. Blackman

OREGON
JULY 13, 1973
GREGORY T. BLACKMAN
991

CITY OF LA GRANDE	
CITY OF LA GRANDE ORIGINAL TOWN OF LE GRANDE LOTS 7 & 8 OF 3 B ST.	
SURVEYED FOR: CITY OF LA GRANDE	
SURVEYED BY: GREGORY T. BLACKMAN	
DRAWN BY: DAN L. CHEVALIER	DATE: 4/15/75