

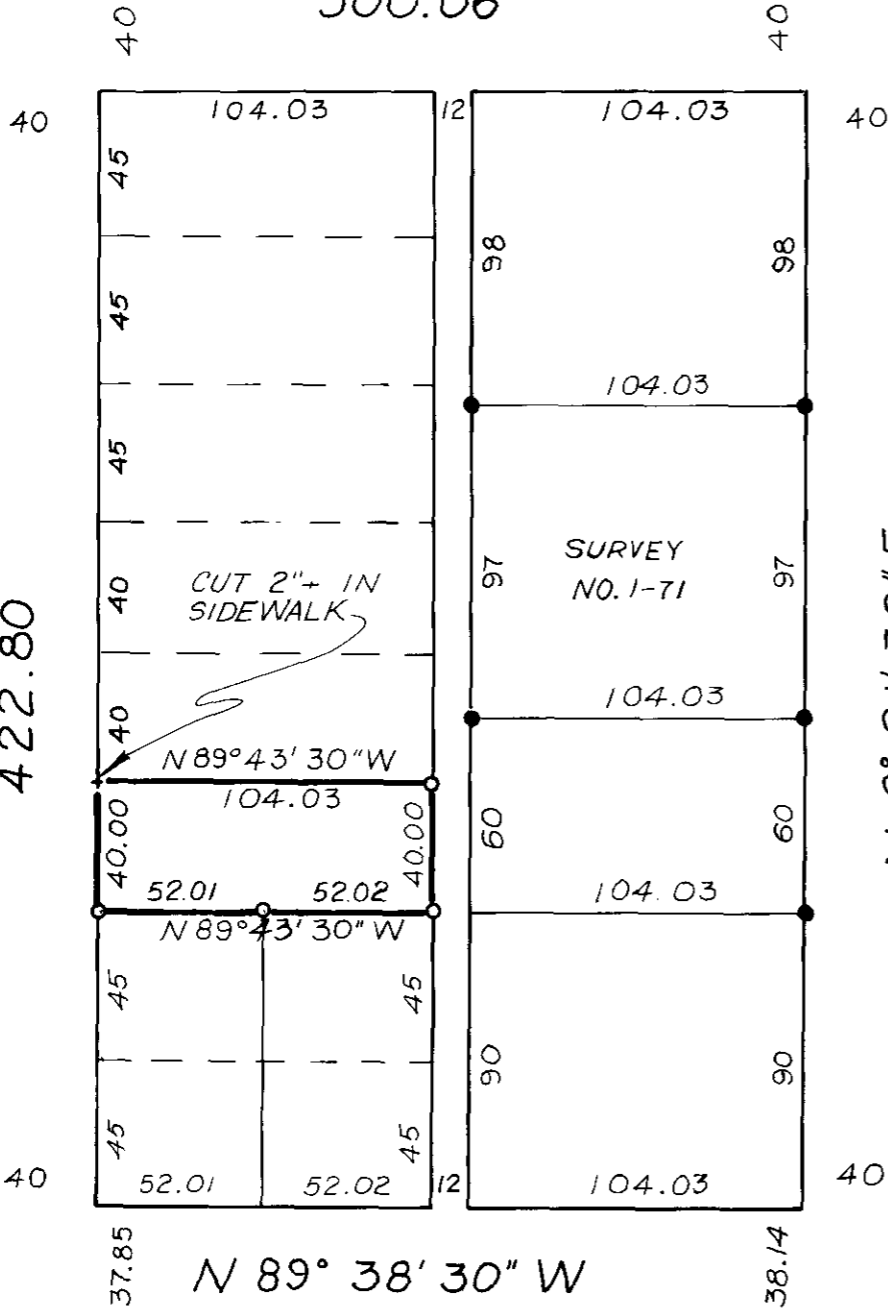
ADAMS

(S 89° 55' 30" W)
N 89° 43' 30" W

AVE

STREET

300.06



LEGEND

- FOUND MONUMENT OF RECORD
- SET 5/8" x 30" IRON PIN
- () RECORD BEARING AND DISTANCE, IF OTHER THAN TRUE

REFERENCE MATERIAL

BASIS OF BEARING
SURVEY #89-72

CITY CONTROL MAP OF 1922
SURVEY NO. 1-71
SURVEY NO. 89-72

**REGISTERED
PROFESSIONAL
LAND SURVEYOR**

Duane L. Griffith
**OREGON
JULY 10, 1994
DUANE L. GRIFFITH
644**

BAGETT, GRIFFITH & ASSOCIATES

La Grande, Oregon

Map of Survey

LOT 14, BLOCK 5
GRANDY'S 2ND ADDITION
TO LA GRANDE

UNION COUNTY, OREGON

SURVEYED FOR GENEVIEVE NELSON

SURVEYED BY DUANE I. GRIFFITH

Scale: 1" = 60'

Drawn by: D. I. G.

MAR. '15

3-75