

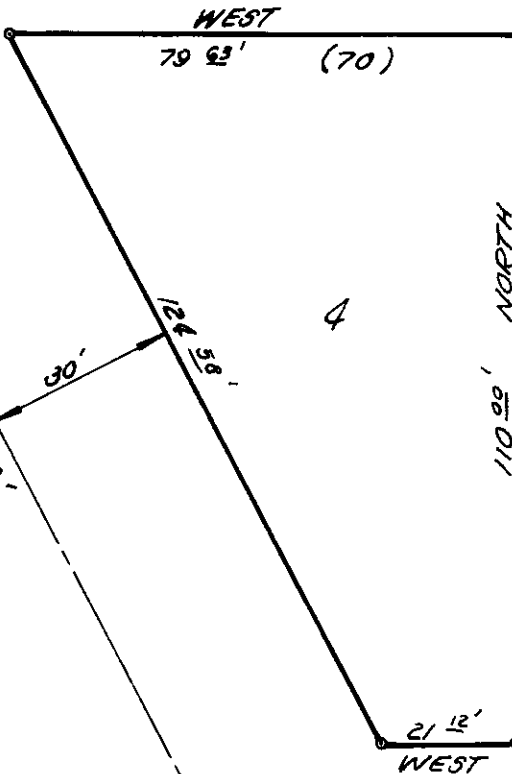
HILL

S 28° 02' 15" E

AVENUE

(498.53)

498.53'



ALLEY

3/4" I.P.

12 13

FOUND UNRECORDED PINS. PINS WERE .44 WEST OF TRUE POSITIONS (50) (54)

3/4" I.P. 3/4" I.P. 1/2" I.P.

NOTE:

FOUND NAILS ON E K AVE. .45 & .73 WEST OF OUR SET @.

SET CONC. NAIL

45° 43' 45"

SET CONC. NAIL

ELEVENTH ST. NORTH

SURVEYOR NOTE:

I FOUND A 9.63 FT. ERROR IN PLATTING OF LOT 4. LOT 4 SCALES 80 FT. ON McCLAIN'S RESURVEY, AND CAN BE PROVEN BEYOND DOUBT THAT 70 FT. IS INCORRECT. MY POSITIONING OF THE PINS AT 79.53 IS HARMONIOUS WITH PRESENT PROPERTY LOCATIONS.

BASIS OF BEARING @ OF ELEVENTH ST. NORTH.

REGISTERED PROFESSIONAL LAND SURVEYOR

Gregory T. Blackman

OREGON
JULY 12, 1970
GREGORY T. BLACKMAN
991

LEGEND

- SET 1/2" RE-BAR
- FOUND UNRECORDED PINS
- ▲ FOUND MONUMENT OF RECORD
- () RECORDED DISTANCE

CITY OF LAGRANDE		
O'CONNOR ADDITION		
LOT 4 BLK. 3		
SURVEYED FOR	LARRY & CLARA ESPINOLA	
SURVEYED BY	GREGORY BLACKMAN	
SCALE 1" = 80'	DRAWN BY D.L.C.	DATE 5-74

17-74