

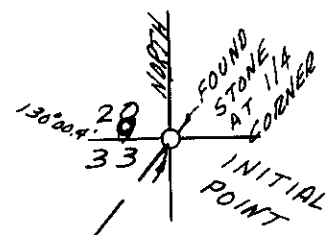
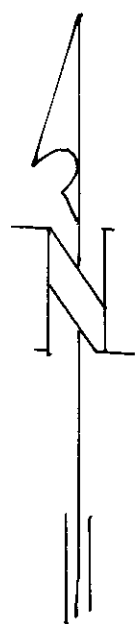
PLAT
of survey for
DONALD D. HAMANN

ALICE, OREGON
DECEMBER 3, 1973

LOCATED IN THE NW1/4 OF SECTION 33 T2S R39E WM.

LEGEND

- SCALE 1" = 300'
- Found monuments as indicated.
- () Data of record.
- Existing well.



BASIS OF BEARINGS
 BASED ON SEC 20
 N/S 1/4 SEC LINE
 BEING NORTH

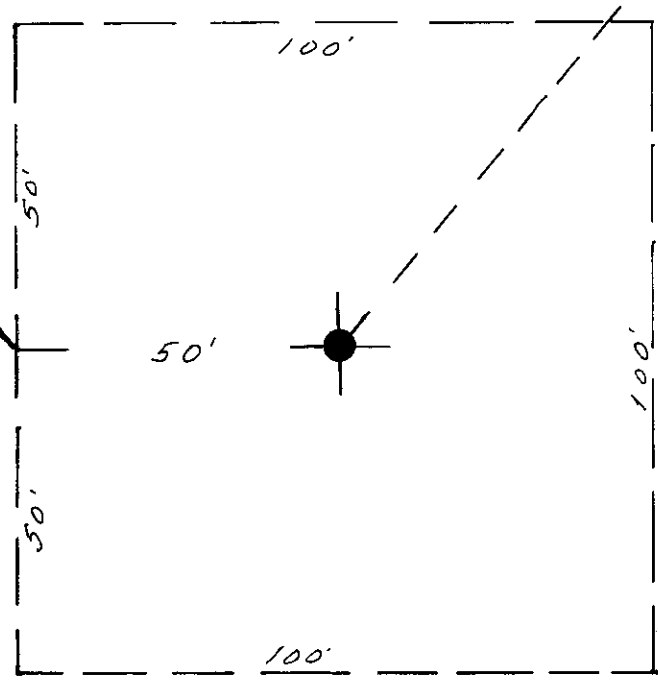
S 40° 00' 24" W
 1,913.55'

INSERT
 1" = 30'

S 40° 00' 24" W
 1,913.55'



SEE INSERT



James G. Volz
 JAMES G. VOLZ
 381