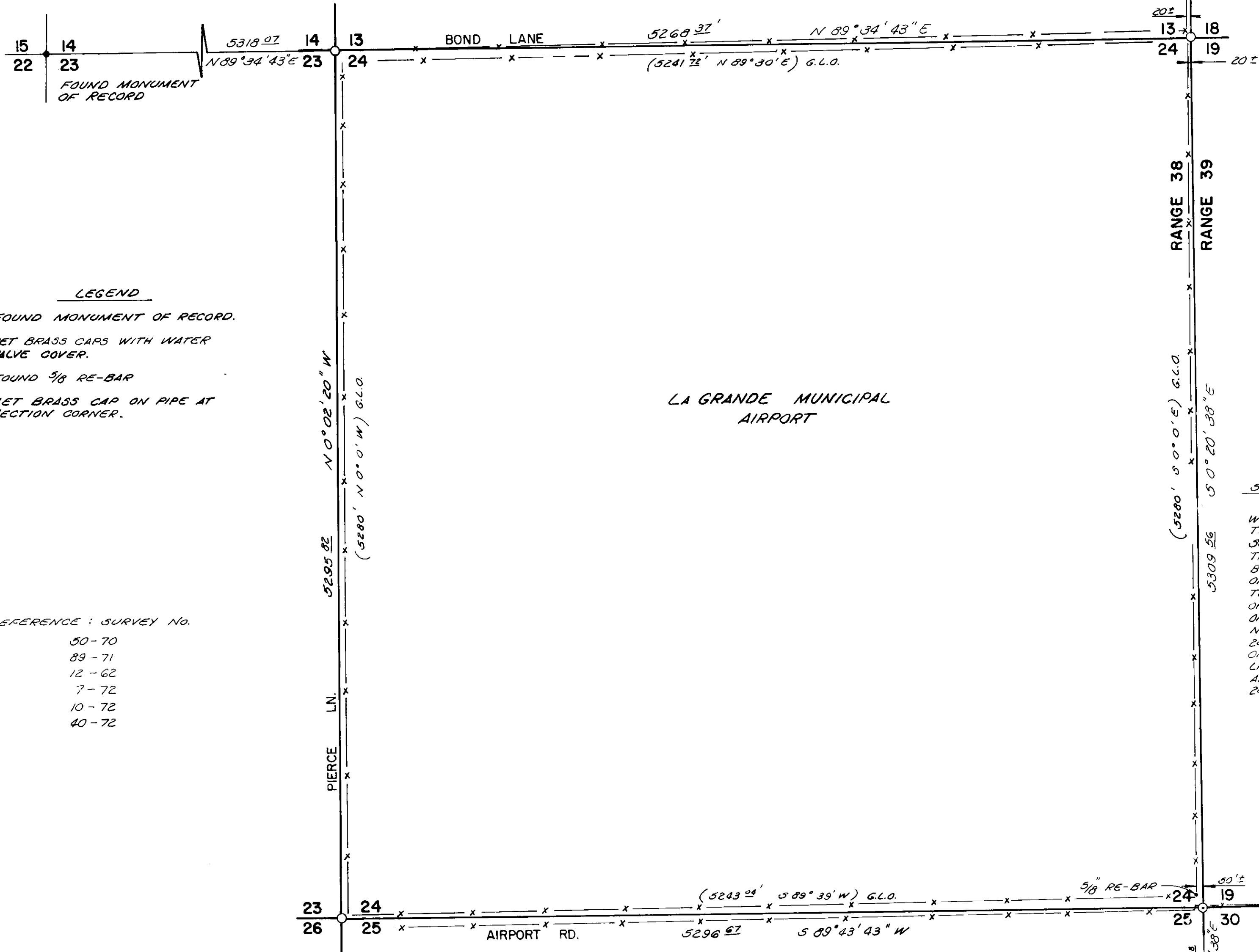


N.E. CORNER, SECTION 13 CALLED  
IN SURVEY # 10-72

2655 79  
S 0° 0' 06" E

FOUND - FENCE CORNER CALLED IN  
SURVEY # 10-72 & 40-72



**LEGEND**

- FOUND MONUMENT OF RECORD.
- SET BRASS CAPS WITH WATER VALVE COVER.
- FOUND 5/8 RE-BAR
- ⊙ SET BRASS CAP ON PIPE AT SECTION CORNER.

REFERENCE : SURVEY NO.

- 50-70
- 89-71
- 12-62
- 7-72
- 10-72
- 40-72

LA GRANDE MUNICIPAL  
AIRPORT

SCALE 1" = 50'

BASIS OF BEARING  
FORWARD BEARING PUBLISHED  
BY THE U.S.C. & G.S. FROM Δ  
COLLEGE TO Δ VALLEY.

**SURVEYOR STATEMENT**

THE SECTION CORNERS ON THE RANGE LINE ON THIS SURVEY WERE ESTABLISHED ON THE BASIS OF A SINGLE PROPORTION BETWEEN THE 1/4 CORNER AT SECTION 13 & 18, AND 1/4 CORNER AT SECTIONS 36 & 31 FOR THE PURPOSE OF HARMONY. I ACCEPTED THE CENTER OF FENCED RIGHT-OF-WAY OF PIERCE LANE AS BEING THE WEST LINE OF SECTION 24. THE NORTH WEST CORNER OF SECTION 24 WAS ESTABLISHED BY DRIVING A STRAIGHT LINE BETWEEN THE N.E. CORNER OF SECTION 24 AND THE N.W. CORNER OF SECTION 23 AND INTERSECTING THE @ OF PIERCE LANE. THE ORIGINAL NOTES SHOWED A 9 MIN. VARIATION BETWEEN THE NORTH LINE OF SECTION 24 AND THE SOUTH LINE OF SECTION 24. ON THIS BASIS I APPLIED THE CORRECTION TO THE BEARING OF THE NORTH LINE AND USED THIS BEARING FOR THE SOUTH LINE AND RAN AN INTERSECT BETWEEN THE @ OF PIERCE LN. AND THE COMPUTED BEARING OF THE SOUTH LINE OF SECTION 24 FOR THE S.W. CORNER OF SECTION 24.

REGISTERED  
PROFESSIONAL  
LAND SURVEYOR

Gregory T. Blackman

OREGON  
JULY 19, 1973  
GREGORY T. BLACKMAN  
991

FOUND 2" I.P. IN FENCE CORNER  
IDENTIFIED BY J.G. VOELZ AS 1/4  
CORNER.

T3S R38 E W.M. LA GRANDE MUNICIPAL AIRPORT			
SCALE	REVISIONS	BY	DATE
1" = 50'			
DATE			
1-3-74			
DRN.	CKD.		
D.L.C.			
APVD.	G.T.B.		
SURVEYED BY:	GREG T. BLACKMAN		

1-74