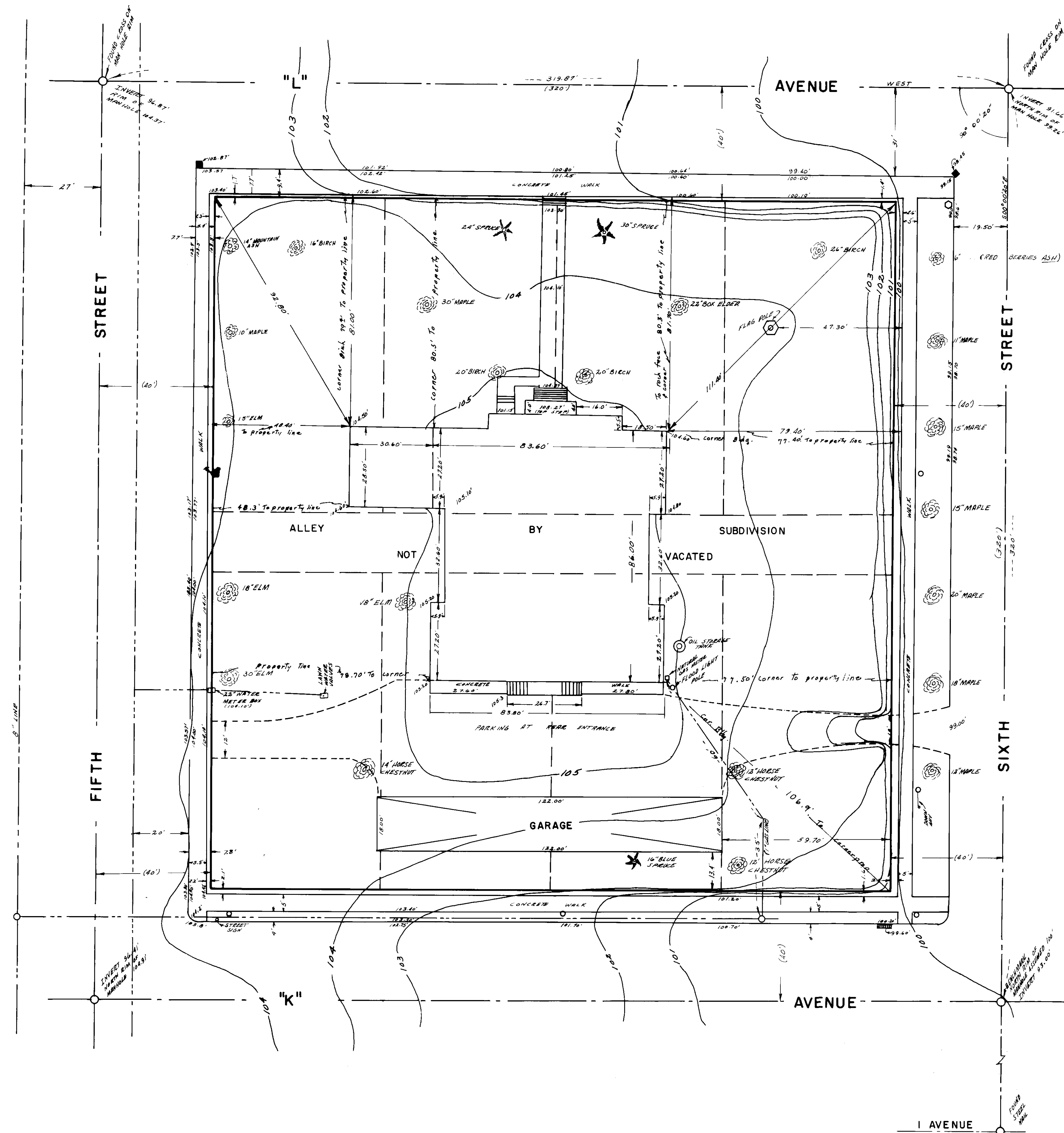


TOPOGRAPHIC MAP
OF
UNION COUNTY COURT HOUSE
LA GRANDE, OREGON
IN BLOCK 49, CHAPLIN'S ADDITION
AUGUST 21, 1973



LEGEND

SCALE 1" = 20'

- () DATA OF RECORD
- STREET CENTERLINES
- - - NATURAL GAS LINES
- - - CITY WATER LINES (90 PSI)
- MANHOLE RIMS AND COVERS
- POWER POLES (3 Phase, 120/208 available)
- STOP SIGN
- ▭ STORM DRAINS

BASIS OF BEARINGS
BASED ON C OF
"L" AVE. BEING WEST

PROJ. & SURV.
AND
James D. Shale
REGISTERED PROFESSIONAL SURVEYOR
STATE OF OREGON
NO. 12345