

PLAT  
of survey for  
**LAWRENCE R. STARR**  
SUMMERVILLE, OREGON  
OCTOBER 19, 1973  
LOCATED IN THE SW1/4 SW1/4 OF SECTION 6, T1S R39E WM.

LEGEND  
SCALE 1" = 200'

○ Found monuments as indicated.  
● Set 5/8" X 30" steel rods.  
— Centerline of streets.  
( ) Data of record.

REGISTERED  
PROFESSIONAL  
LAND SURVEYOR

James G. Voelz

OREGON  
MAY 4, 1956  
JAMES G. VOELZ  
381

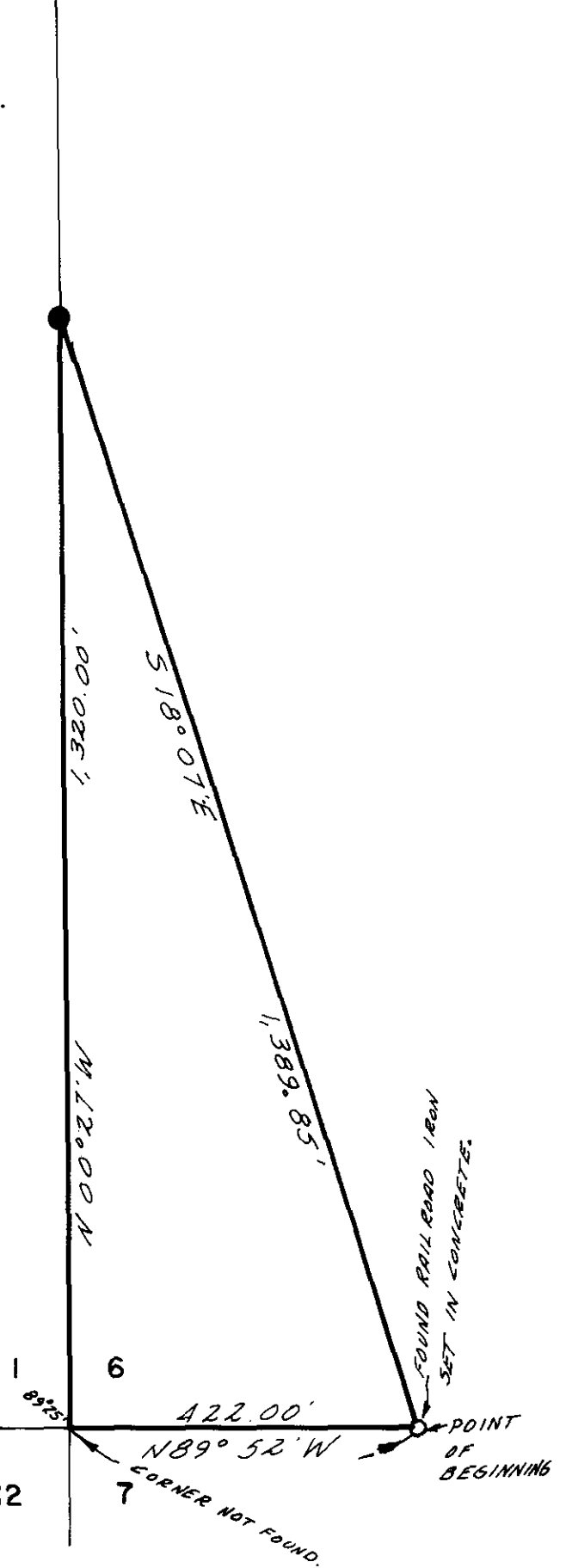


BASIS OF BEARINGS  
BASED ON S. LINE  
OF SECTION 1,  
T1S R38E WM  
BEING N89°52'W



SOUTH 1/4 CORNER  
SECTION 1, T1S R38E WM  
FOUND SHIRT.  
INITIAL POINT.

S 89°52'E, 3,068.00' 12



112-73