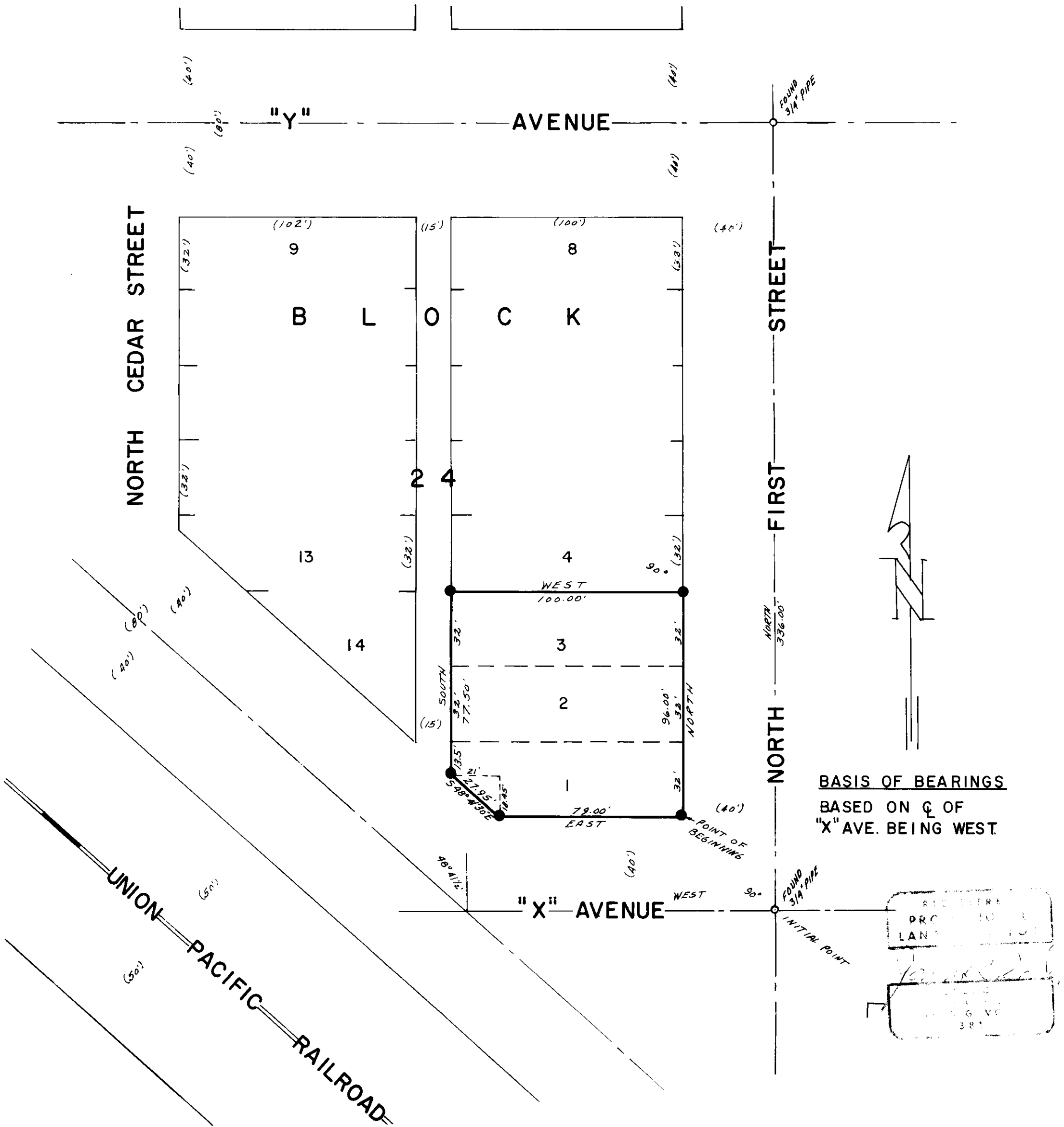


PLAT
of survey of
KEN BRUCE'S LOTS
2502 NORTH FIRST STREET
LA GRANDE, OREGON
LOCATED IN RIVERSIDE ADDITION TO LA GRANDE
SEPTEMBER 8, 1973

- LEGEND
SCALE 1" = 40'
- Found monuments as indicated.
 - Set 1/2" X 30" steel rods.
 - Centerline of streets.
 - () Data of record.



7073