

PLAT
of survey of
HIDDEN VALLEY ESTATES

COVE, OREGON
JANUARY 17, 1972
(completed May, 1973)

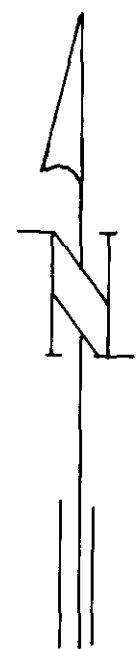
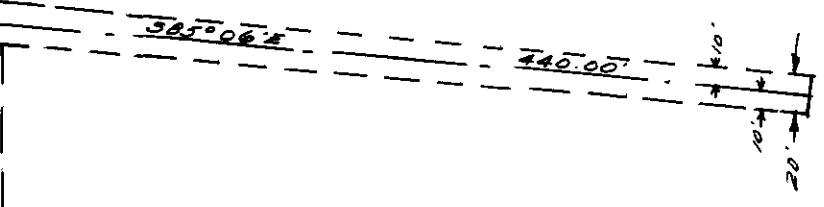
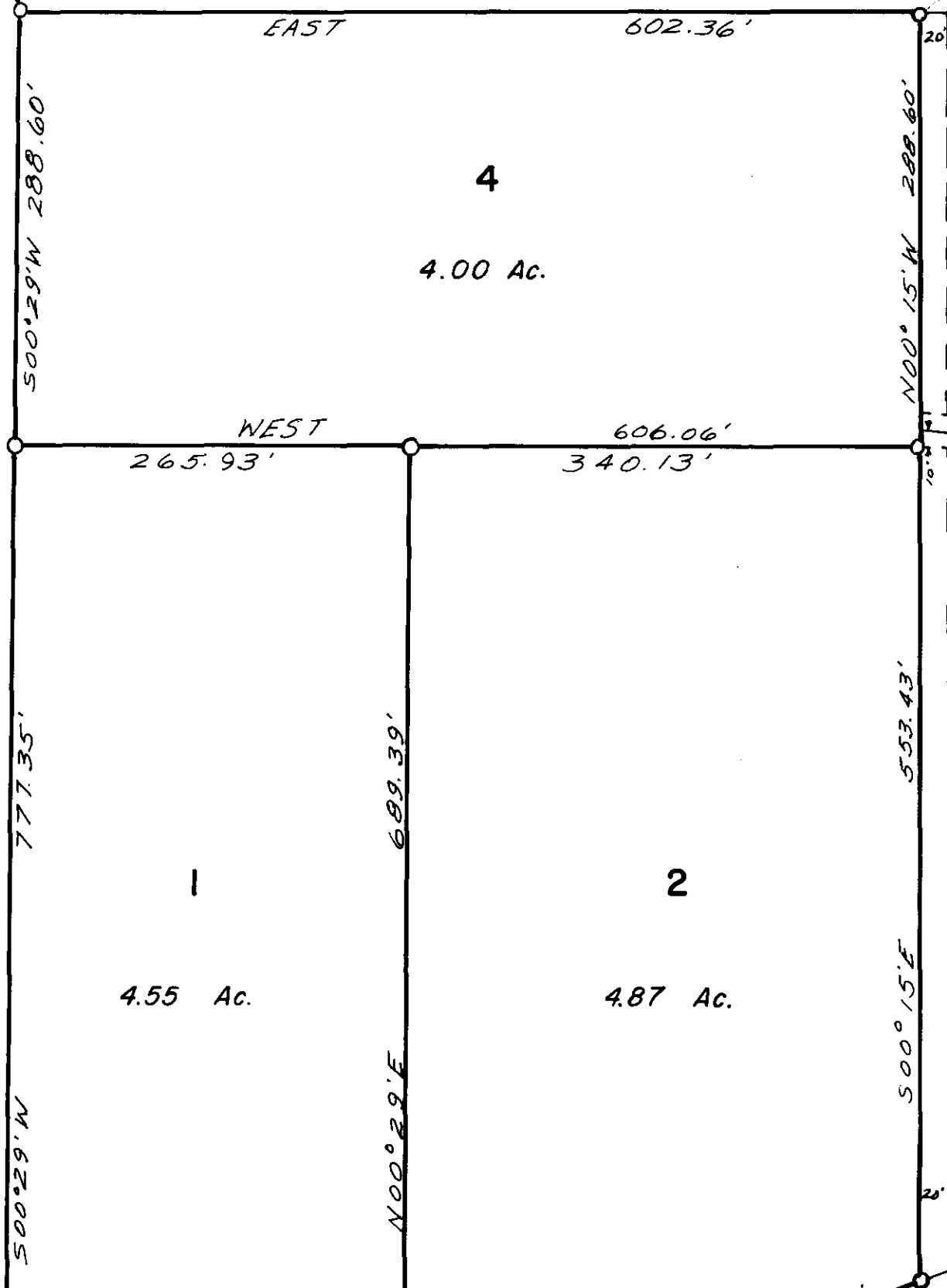
Located in the N.E. 1/4 S.W. 1/4 of Section 23 T3SR40E W.M.

NW CORNER
OF SE 1/4 NW 1/4
FOUND
ROCK JACK
POINT OF
BEGINNING

LEGEND

- SCALE 1" = 100'
- Found monuments as indicated.
 - Set 5/8" X 30" steel rods.
 - Centerline 20' easement to spring.
 - - - Easement boundary.

Amel D. Day



BASIS OF BEARINGS
BASED ON W. LINE
SE 1/4 NW 1/4 BEING
S 00° 29' W.

STEEL SHAFT
AT NW CORNER OF
HANGOVER PROPERTY.