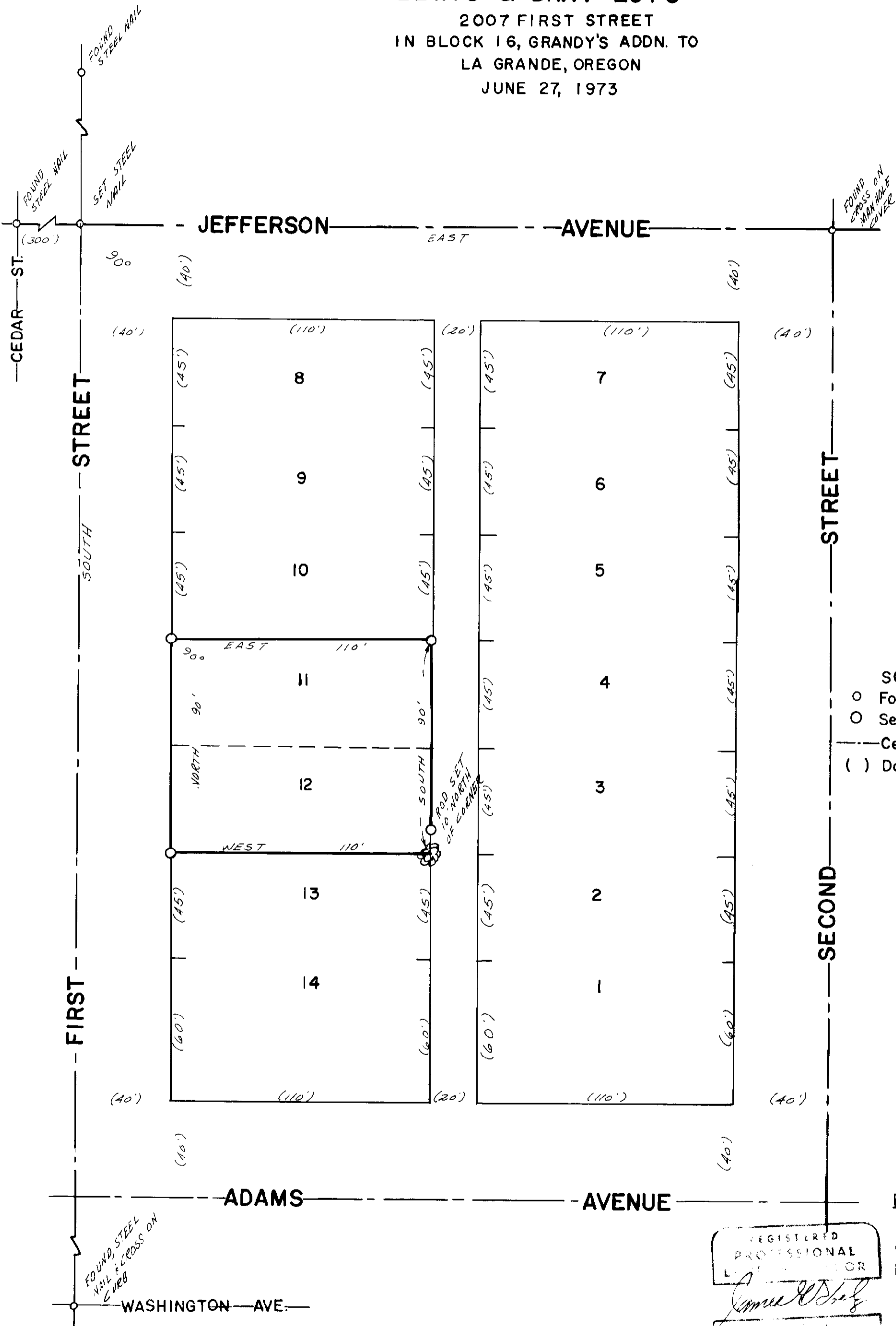
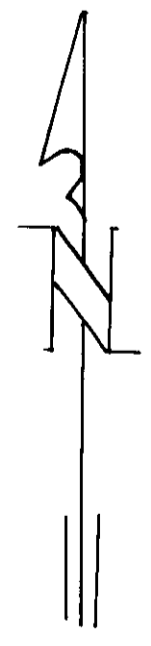


PLAT
of survey of
LEWIS S. BRAY LOTS
2007 FIRST STREET
IN BLOCK 16, GRANDY'S ADDN. TO
LA GRANDE, OREGON
JUNE 27, 1973



LEGEND
SCALE 1" = 40'
○ Found monuments as indicated.
○ Set 5/8" X 30" steel rods.
--- Center line of streets.
() Data of record.



BASIS OF BEARINGS
BASED ON Q OF
JEFFERSON AVE.
BEING EAST.

REGISTERED
PROFESSIONAL
L. S. BRAY
James W. Bray
381