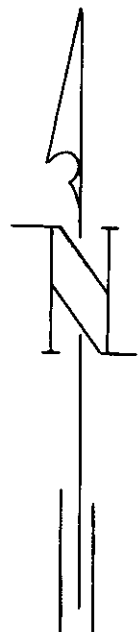


PLAT
of survey of
REX GRIGGS TRACTS
Located in SE1/4SW1/4 of Section 11
T3S R38E WM

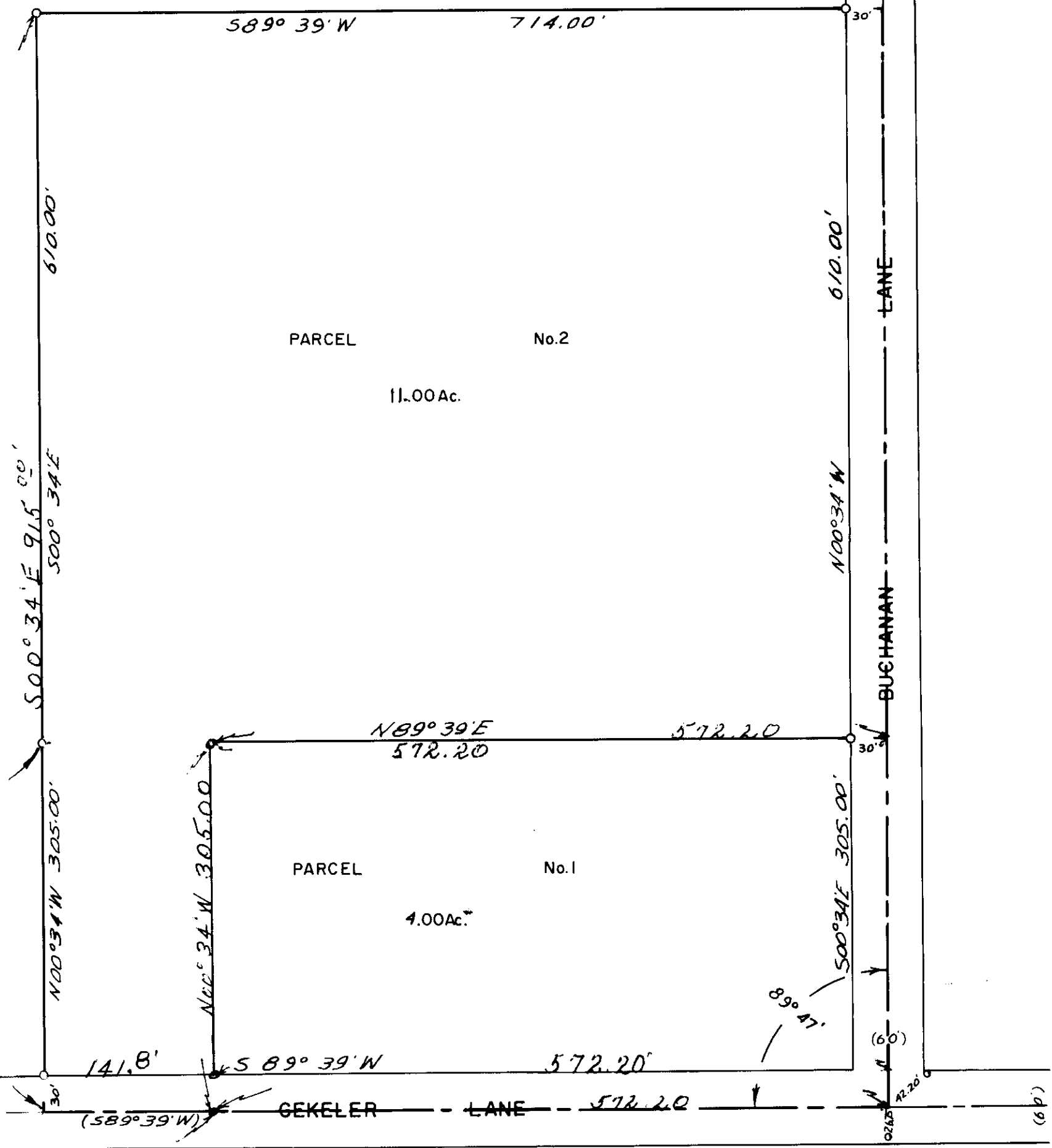
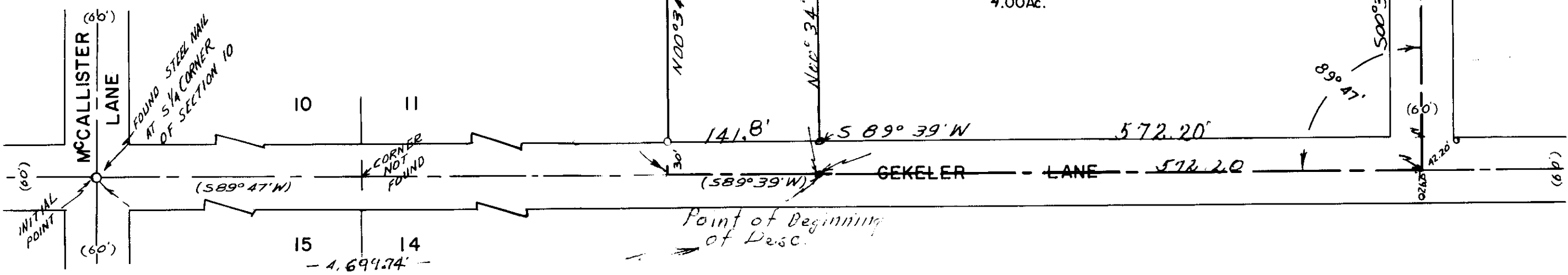
LEGEND

- o Scale: 1"=100'
- o Set 5/8" x 30" steel rods.
- () Found monument as indicated.
- () Data of record.
- Centerline of blacktop.
- o Power poles.

James W. Debel



BASIS OF BEARINGS
BASED ON S. LINE
SEC 11 AS S 89° 39' W.



4775