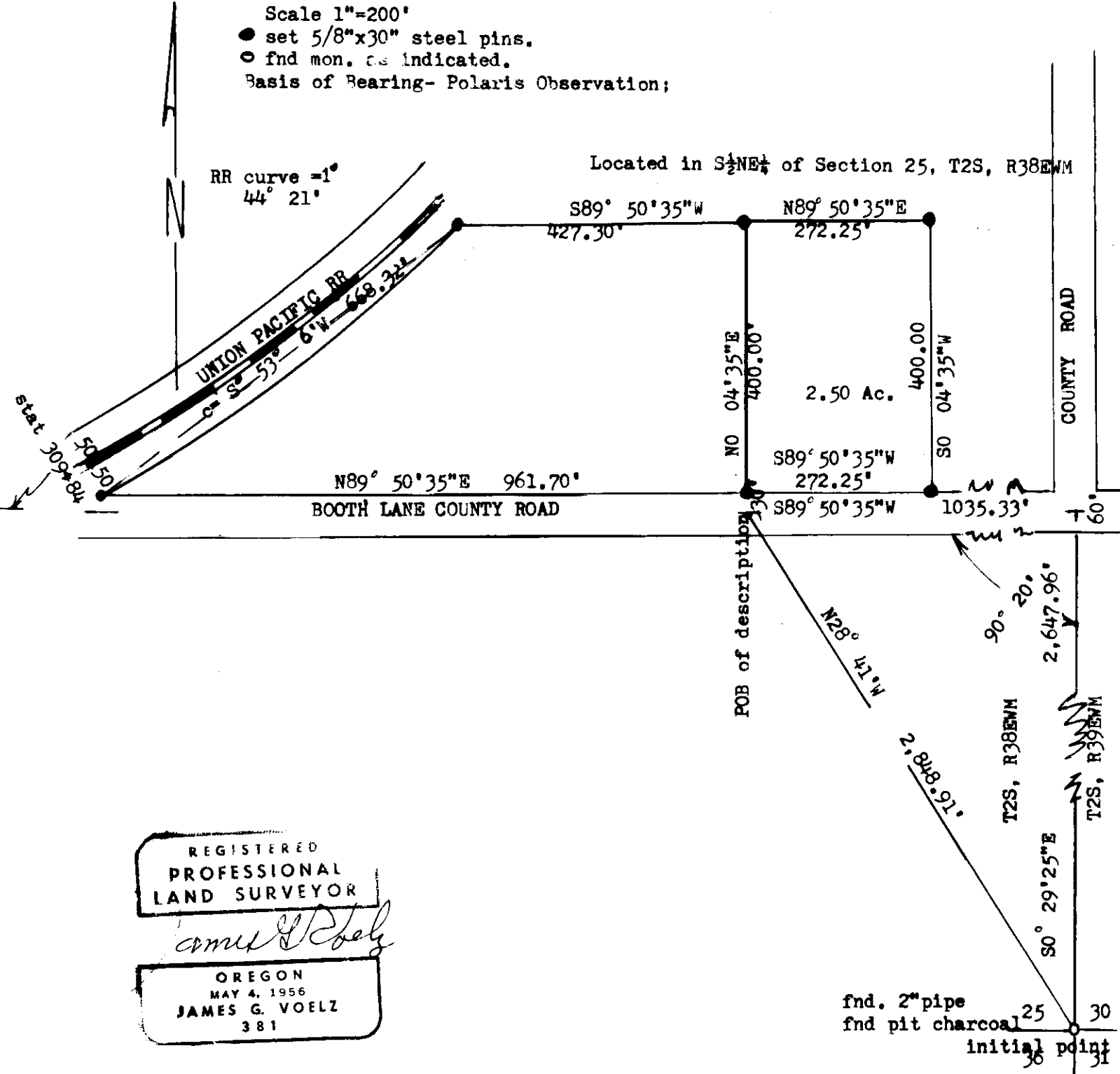


VALLEY CHEMICAL CO.
Island City, Oregon

April 2, 1973

- Scale 1"=200'
 ● set 5/8"x30" steel pins.
 ○ fnd mon. as indicated.
 Basis of Bearing- Polaris Observation;



REGISTERED
PROFESSIONAL
LAND SURVEYOR

James G. Voelz

OREGON
MAY 4, 1956
JAMES G. VOELZ
381

Ref
74-1972

25-73