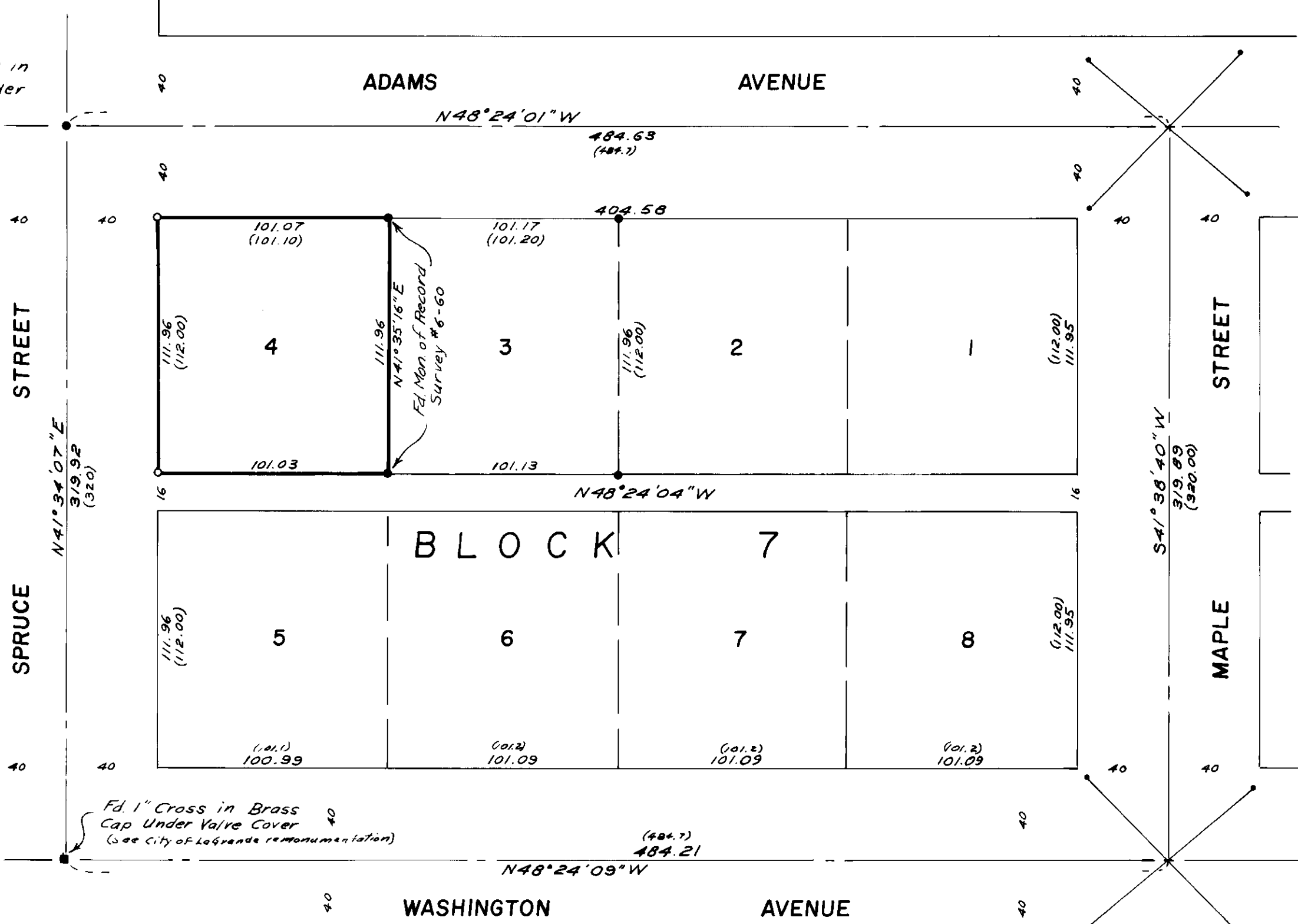


Fd. Brass screw in lead plug under 6" water cover



BASIS OF BEARING  
 Forward Bearing as Published by U.S.C. & G.S. from  $\Delta$  College to  $\Delta$  Valley.

REGISTERED PROFESSIONAL LAND SURVEYOR  
 Duane I. Griffith  
 OREGON  
 JULY 10, 1964  
 DUANE I. GRIFFITH  
 644

**REFERENCE MATERIAL**

- City Survey Map (1922)
- Map of Survey no. 23-72
- " " " " 6-62
- " " " " 6-60

**LEGEND**

- Fd. Monument of Record
- Fd. Unrecorded Monument as Described
- Set  $\frac{5}{8}$ " x 30" Iron Pin with Plastic Cap Marked "BGF Survey Mk"
- ( ) Record Bearing & Distance

**BAGETT-GRIFFITH-FERGUSON**  
 LaGrande, Oregon

Map of Survey  
 Lot 4 of Block 7 of Coggan's Addition to LaGrande  
 UNION COUNTY, OREGON

SURVEYED FOR	Bill Thomas	by	DIG
DESIGNED FOR		by	
Scale: 1" = 50'	Drawn by	LET	Mar 1973

20-73