

CAL PAC SURVEY

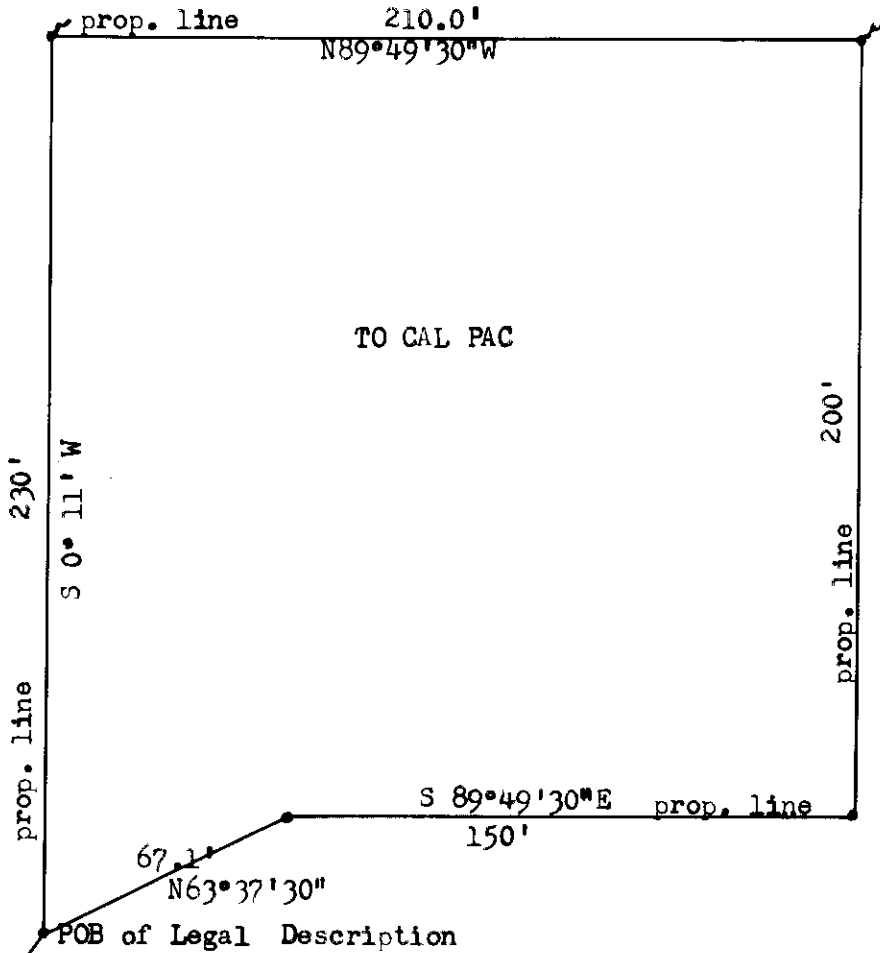
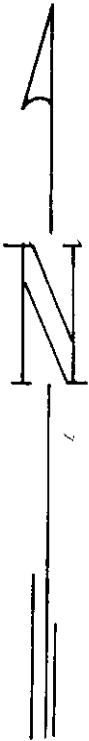
Dec 2, 1972

Scale: 1"=50'
 () Data of Record
 August 28, 1972
 ✓ 5/8"x30" steel rod
 • 2" steel fence post

property line

(Basis of Bearing established by B.P.A.) (N 0° 11' E)

(1437.5)



200'

N 0° 11' E

REGISTERED
 PROFESSIONAL
 SURVEYOR

James C. Voeltz
 JAMES C. VOELTZ
 381

found brass cap in conc. B.P.A.

SW cor. B.P.A. property

TS 3S R 38E WM

prop. line

30'

GEKELER LANE

S 89° 51' E

initial point

775.8'

107-42

8	9
17	16