

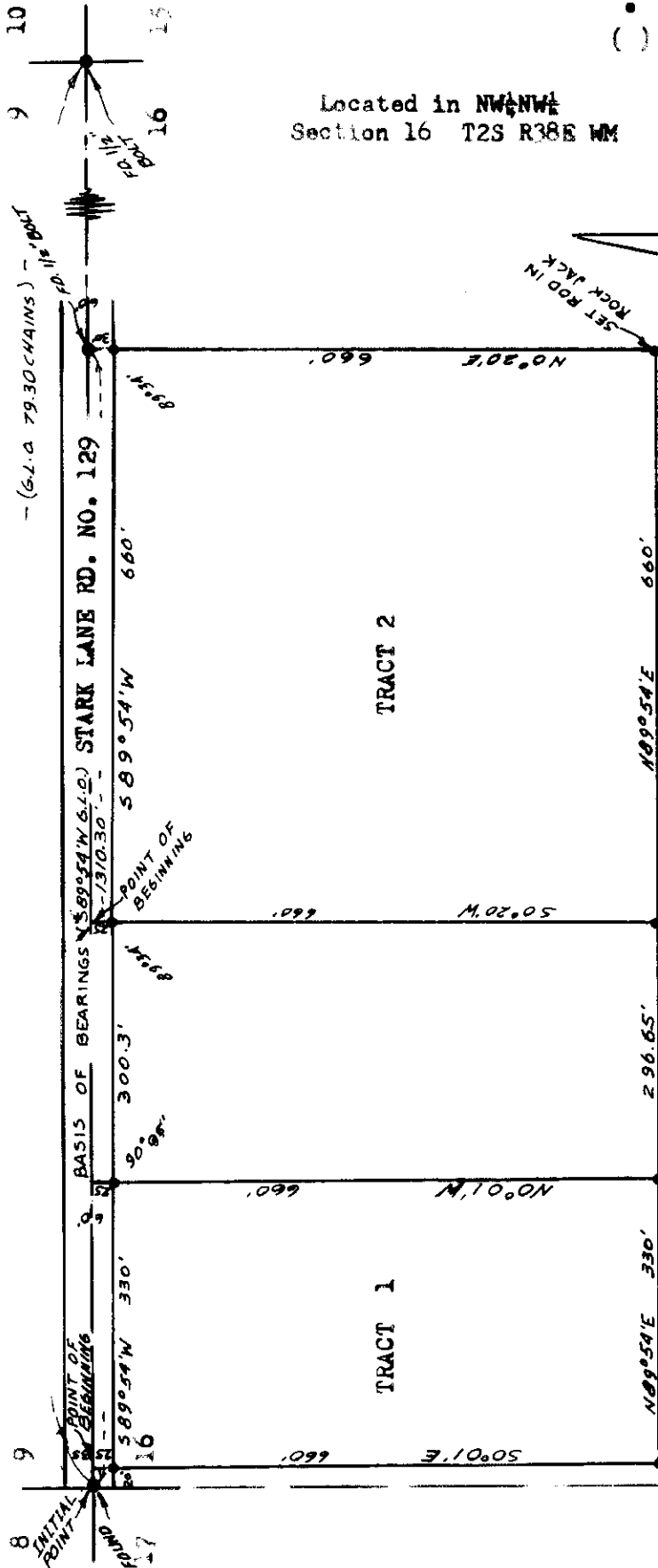
Map of Survey
for
GEORGE LIVINGSTON
Mt. Glenn

November 10, 1972

Scale: 1" = 200'

- Found Monuments as indicate
- Set 5/8" x 30" Steel Rods
- () Data of Record

Located in NW $\frac{1}{4}$ NW $\frac{1}{4}$
Section 16 T2S R38E WM



James O'Beahy

100-72

100-72