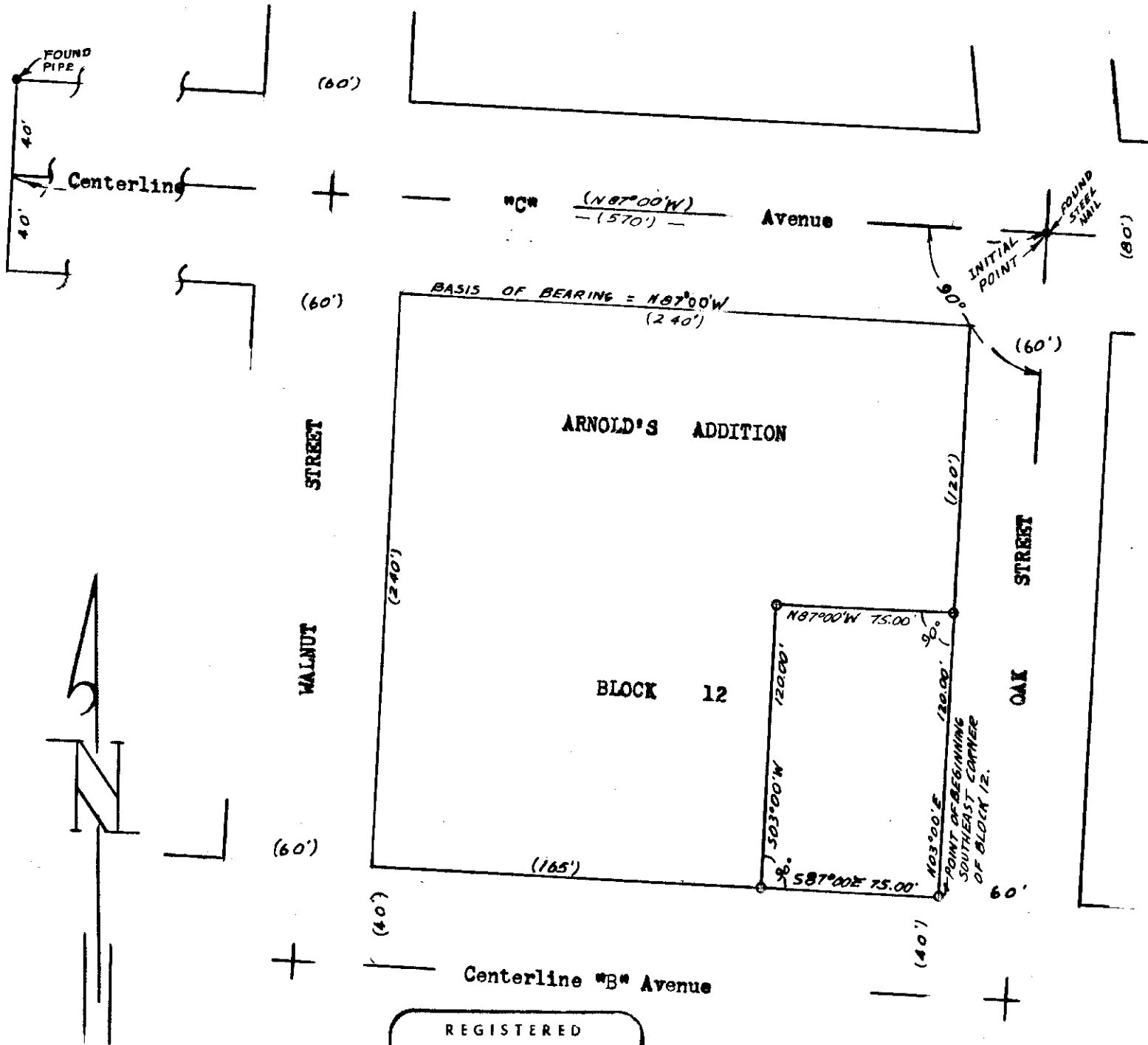


Raymond A. Kibbey
 405 "B" Avenue
 La Grande, Oregon

Scale: 1" = 60'

October 11, 1972

- () Data of Record
- o Set 5/8" X 30" Steel Rods
- Found Monuments as indicated



REGISTERED
 PROFESSIONAL
 LAND SURVEYOR

James G. Voelz

OREGON
 MAY 4, 1956
 JAMES G. VOELZ
 381

27-1972

94.72