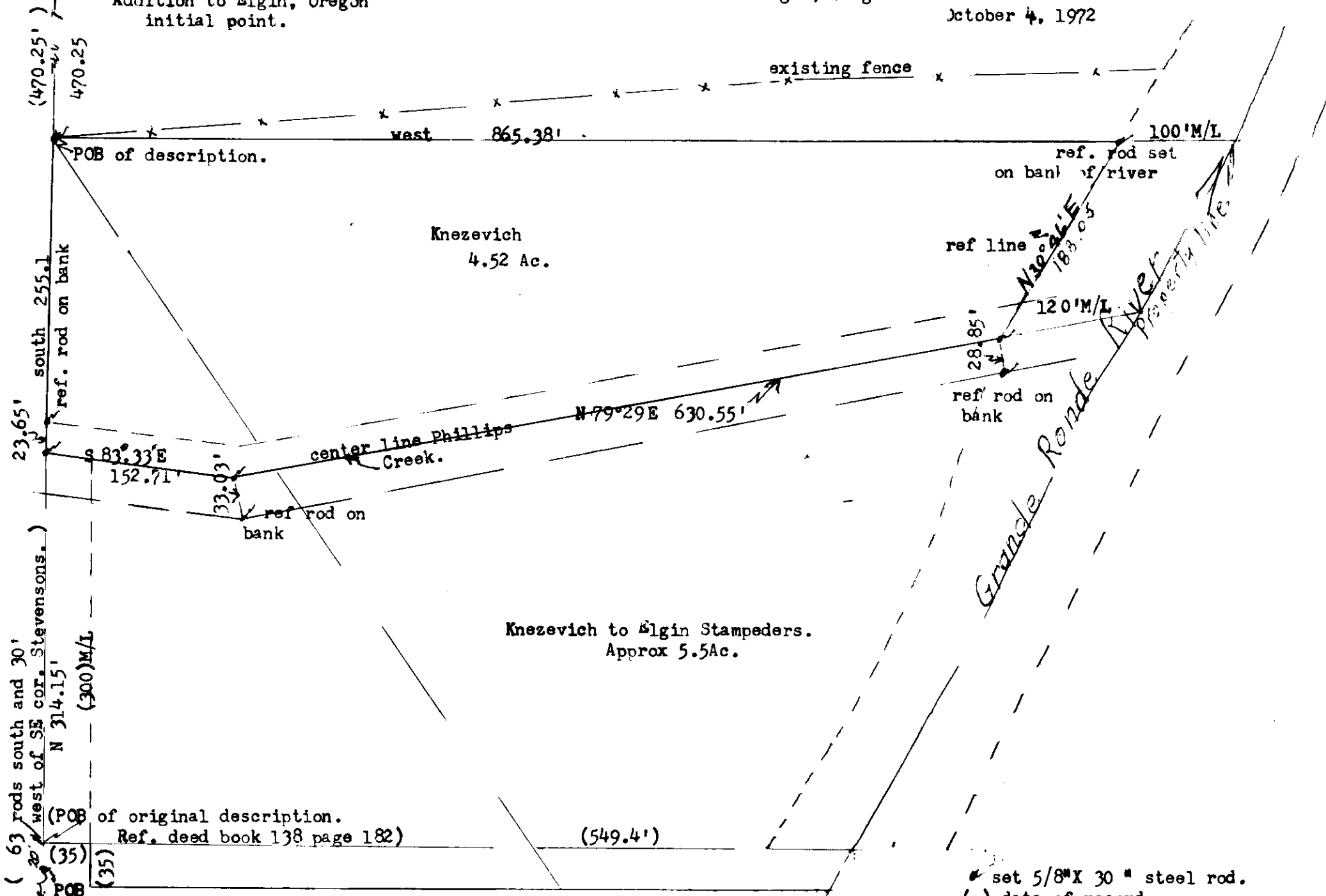


center line basis of bearing Cedar Street

stone found on the
southeast corner of R.E. Stevensons
Addition to Elgin, Oregon
initial point.

Margarette Knezevich
Elgin, Oregon

October 4, 1972



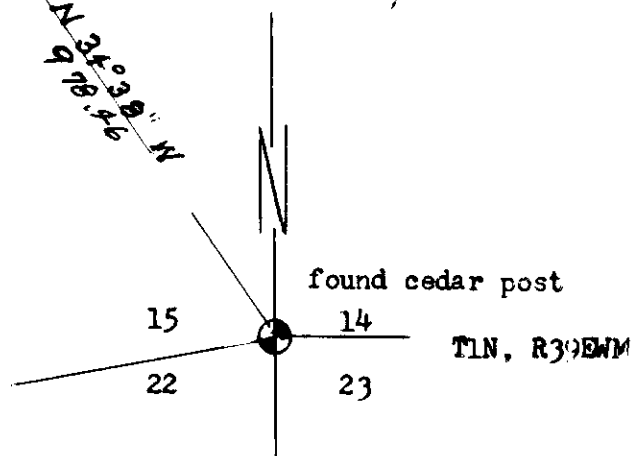
Note; Deed 122 page 283
to Elgin Stampeders
does not agree with
Knezevich deed.

Elgin Stampeders

- set 5/8" X 30" steel rod.
- () data of record.
- ⊕ corner stone found
- section corner post found

REGISTERED
PROFESSIONAL
LAND SURVEYOR

OREGON
MAY 4, 1956
JAMES G. VOELZ
381



90-72