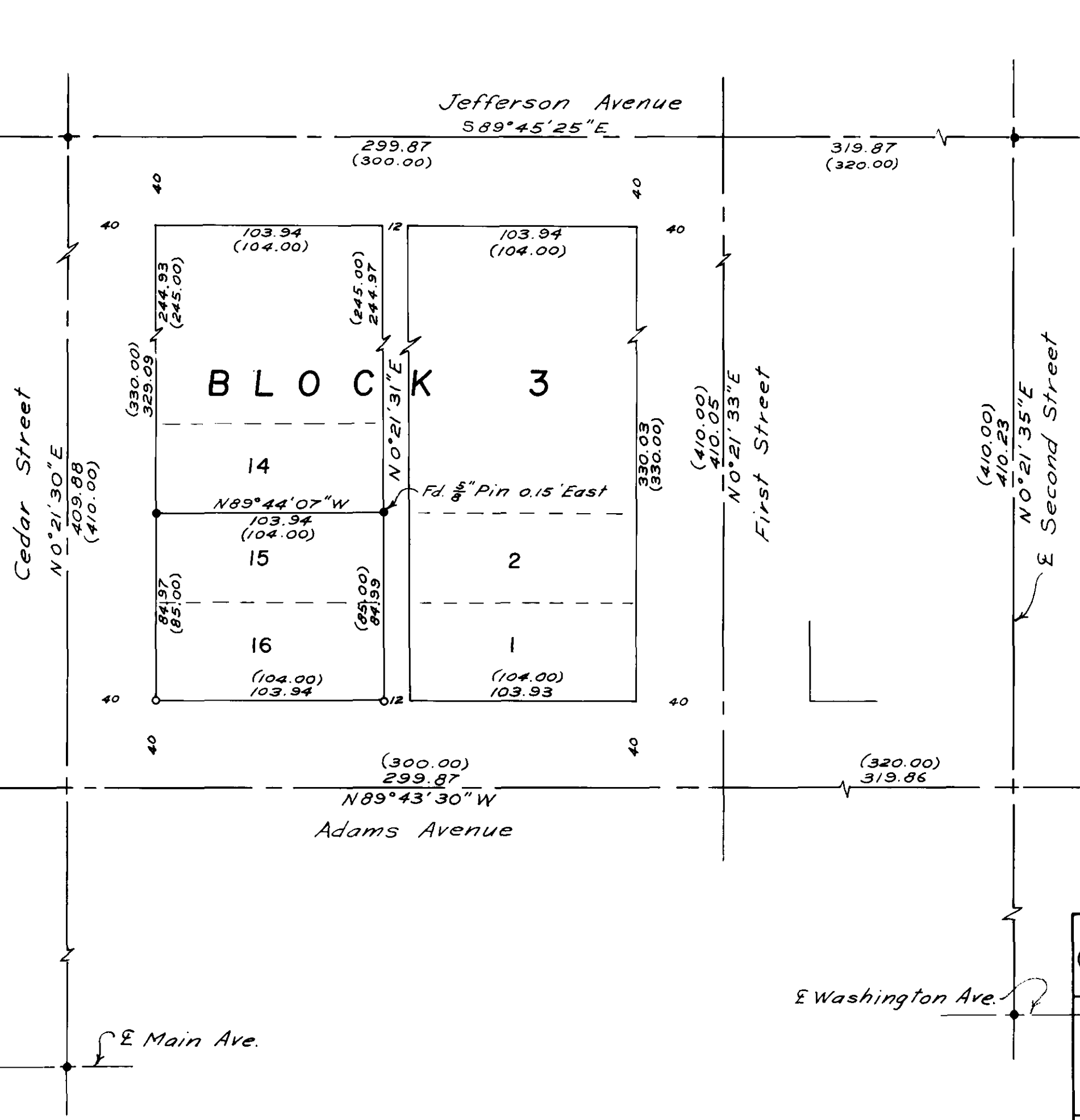


**BASIS OF BEARING**  
 Forward Bearing as  
 Published by U.S.C.  
 and G.S. from  $\Delta$  College  
 to  $\Delta$  Valley.



**LEGEND**

- Fd. Monument of Record
- Set  $\frac{5}{8}$ " x 30" Iron Pin with Plastic Cap Marked "BGF Survey Mk"
- ( ) Record Bearing & Distance
- E of Street or Avenue

**REFERENCE MATERIAL**

City Control Map (1922)  
 Map of Survey No. 10-71  
 " " " " 70  
 " " " " 13-69

REGISTERED  
 PROFESSIONAL  
 LAND SURVEYOR

*Duane I. Griffith*

OREGON  
 JULY 10, 1964  
 DUANE I. GRIFFITH  
 644

**BAGETT-GRIFFITH-FERGUSON**  
 LaGrande, Oregon  
 Map of Survey  
 Lots 15 & 16 of Block 3  
 Grandy's Second Addition to  
 LaGrande  
 UNION COUNTY, OREGON

SURVEYED FOR	LaGrande Paint & Glass	by DIG
DESIGNED FOR		by
Scale: 1" = 50'	Drawn by DIG & LET	Oct 1972