

PENN AVENUE
N 89° 39' 46" W
 (N 89° 48' 45" E)
319.91
 (320.00)

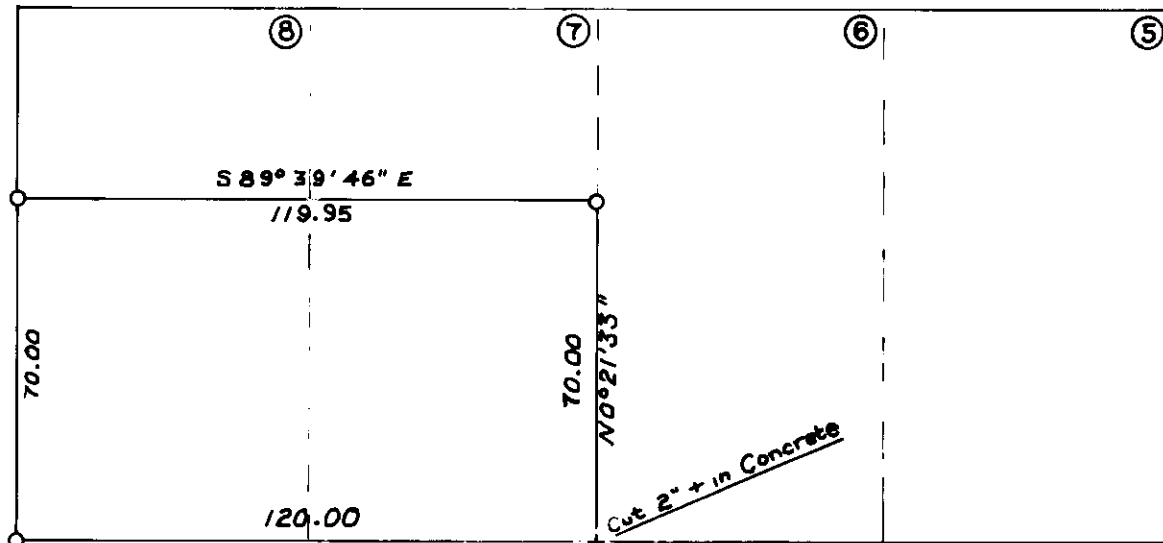
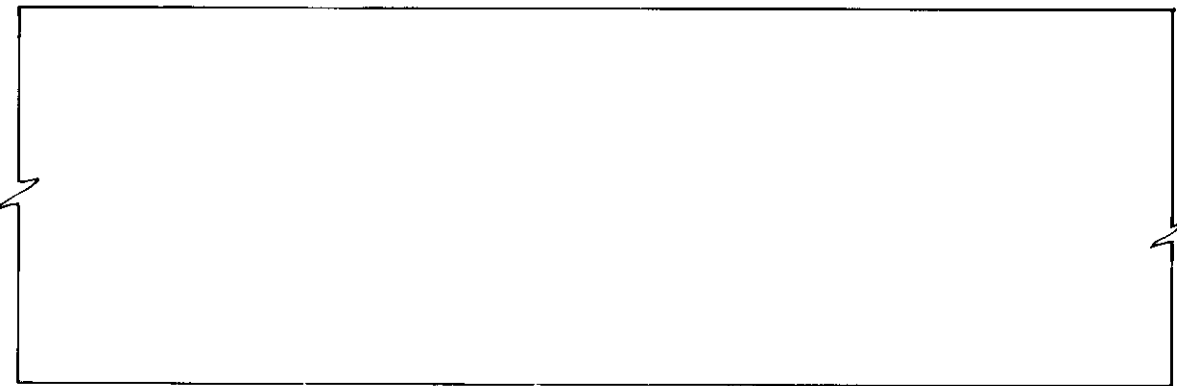
STREET
320.00

6TH
S 0° 22' 02" W

STREET
320.00

7TH
S 0° 21' 04" W

BLOCK 64



N 89° 39' 46" W
320.00
AVENUE

N 89° 39' 46" W

S 0° 22' 02" W

N Street

LEGEND:

- Found Monuments of Record
- ⊕ Found Monument on Manhole
- Set 5/8" x 30" iron pin with plastic Cap Marked "BGF Survey MK"
- () Record Bearing and Distance

marked manhole
rim with punch MKs

remarked manhole
rim with punch MKs

BASIS OF BEARING
 Forward Bearing as published
 by U.S.C. and G.S. from Δ
 College to Δ Valley

**REGISTERED
 PROFESSIONAL
 LAND SURVEYOR**

Duane J. Griffith

OREGON
 JULY 10, 1954
DUANE J. GRIFFITH
 644

BAGETT-GRIFFITH-FERGUSON		
LaGrande, Oregon		
Map of Survey		
The South 70 Feet of Lots 7 & 8		
BLOCK 64		
Chaplin's Addition to LaGrande		
UNION COUNTY, OREGON		
SURVEYED FOR	Gilco Inc	by DIG
DESIGNED FOR		by
Scale: 1" = 40'	Drawn by DIG & TDG	Sept 1972