

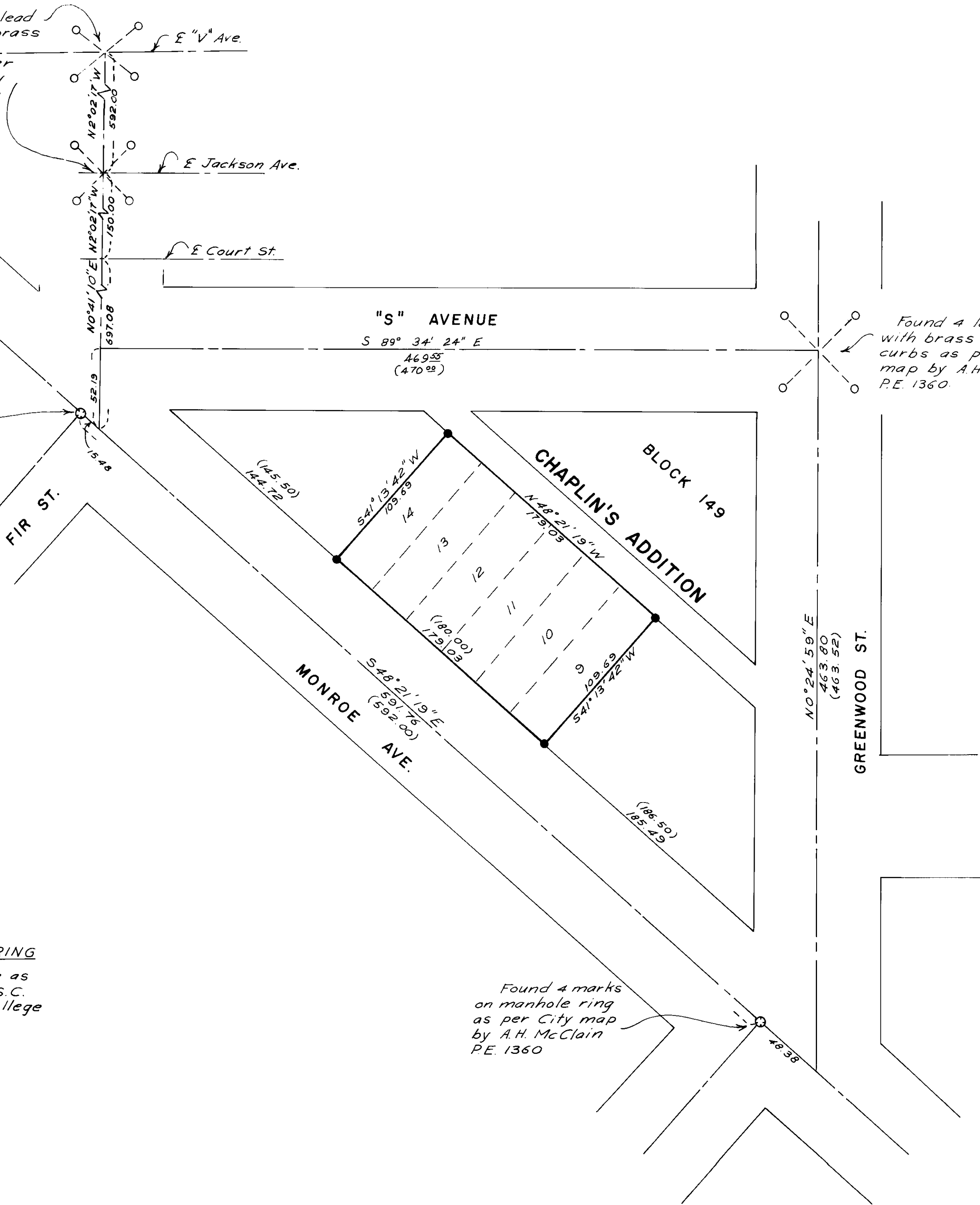
Found 4 lead plugs with brass screws in curbs as per City map by A.H. McClain P.E. 1360

Found 4 marks on manhole ring as per City map by A.H. McClain P.E. 1360

Found 4 lead plugs with brass screws in curbs as per City map by A.H. McClain P.E. 1360.

Found 4 marks on manhole ring as per City map by A.H. McClain P.E. 1360

BASIS OF BEARING
 Forward Bearing as Published by U.S.C. & G.S. from Δ College to Δ Valley



- LEGEND**
- Set $\frac{5}{8}$ " x 30" Iron Pin with Plastic Cap marked "BGF Survey Mk."
 - Boundary of Parcel Surveyed
 - Street R/W Line
 - - - Street ϵ

REGISTERED PROFESSIONAL LAND SURVEYOR

OREGON
 JULY 12, 1968
 DOUGLAS M. FERGUSON
 848

BAGETT-GRIFFITH-FERGUSON
 LaGrande, Oregon
 Map of Survey
 Lots 9, 10, 11, 12, 13, & 14 of Chaplin's Addition to LaGrande
 UNION COUNTY, OREGON

SURVEYED FOR	Kohr's Body Shop	by DMF
DESIGNED FOR		by
Scale: 1" = 50'	Drawn by DMF & LET	Sep 1972