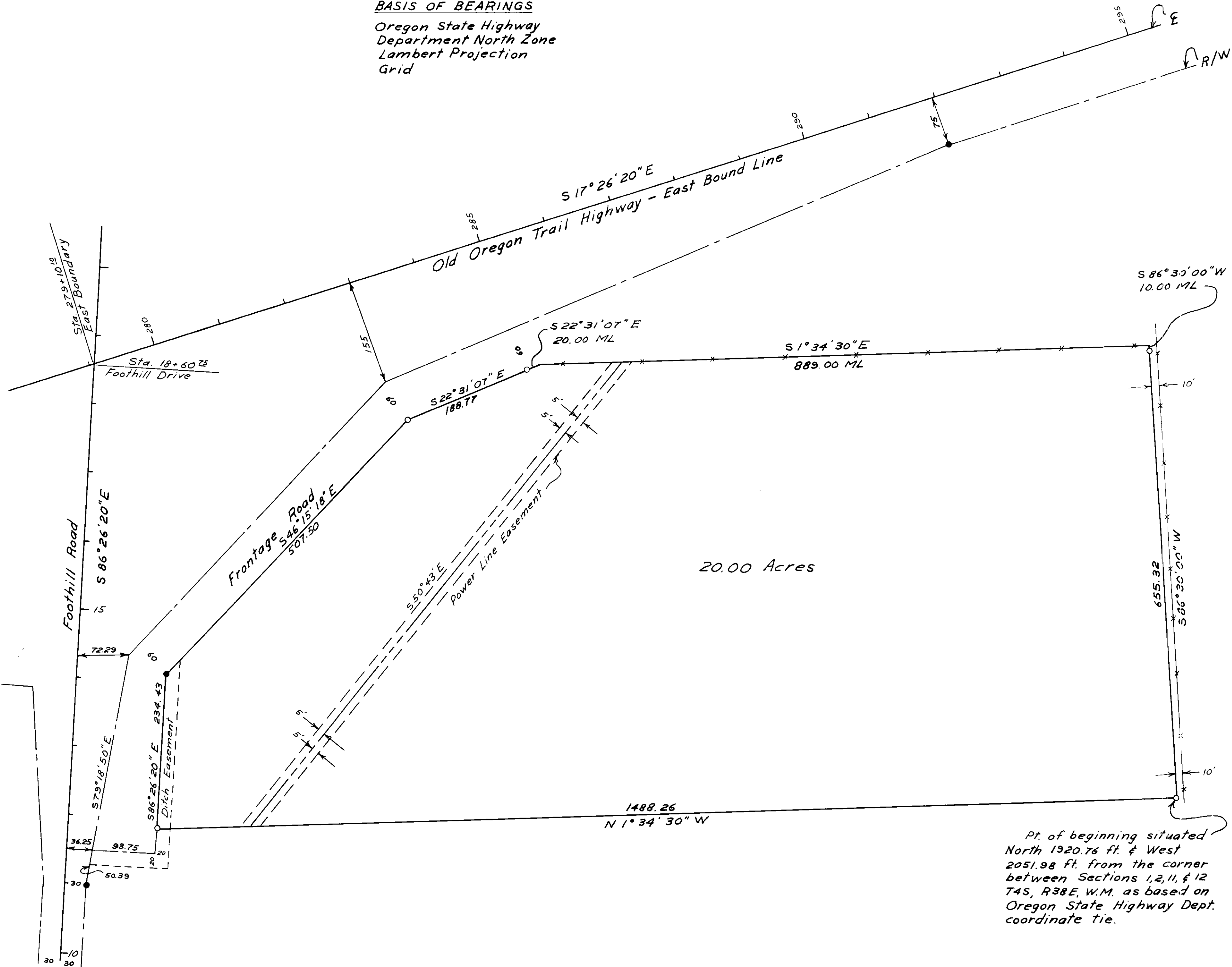




**BASIS OF BEARINGS**  
 Oregon State Highway  
 Department North Zone  
 Lambert Projection  
 Grid



- LEGEND**
- Set  $\frac{5}{8}$ " x 30" iron pin with plastic cap marked "BGF Survey Mk."
  - Found Highway Dept. pin

- Boundary of tract of land surveyed.
- - - - Right-of-Way line
- - - - Easement Line
- - - - Centerline of Power Line
- \* \* \* \* Fence Line
- ML More or Less

**REFERENCE MATERIAL**  
 Ore. State Highway Dept.  
 strip map of Union Jct.-  
 North Powder Section  
 Stations 270+00 to  
 295+00.

20.00 Acres

Pt. of beginning situated  
 North 1920.76 ft. & West  
 2051.98 ft. from the corner  
 between Sections 1, 2, 11, & 12  
 T4S, R38E, W.M. as based on  
 Oregon State Highway Dept.  
 coordinate tie.

<b>BAGETT-GRIFFITH-FERGUSON</b>		
La Grande, Oregon		
Correction Map		
A Tract of Land Situated in the SW $\frac{1}{4}$ , NE $\frac{1}{4}$ , & NW $\frac{1}{4}$ , SE $\frac{1}{4}$ Section 2, T4S, R38E, W.M.		
UNION COUNTY, OREGON		
SURVEYED FOR	Ray Fenn	by DMF
DESIGNED FOR		by
Scale: 1" = 100'	Drawn by LET	July 1972