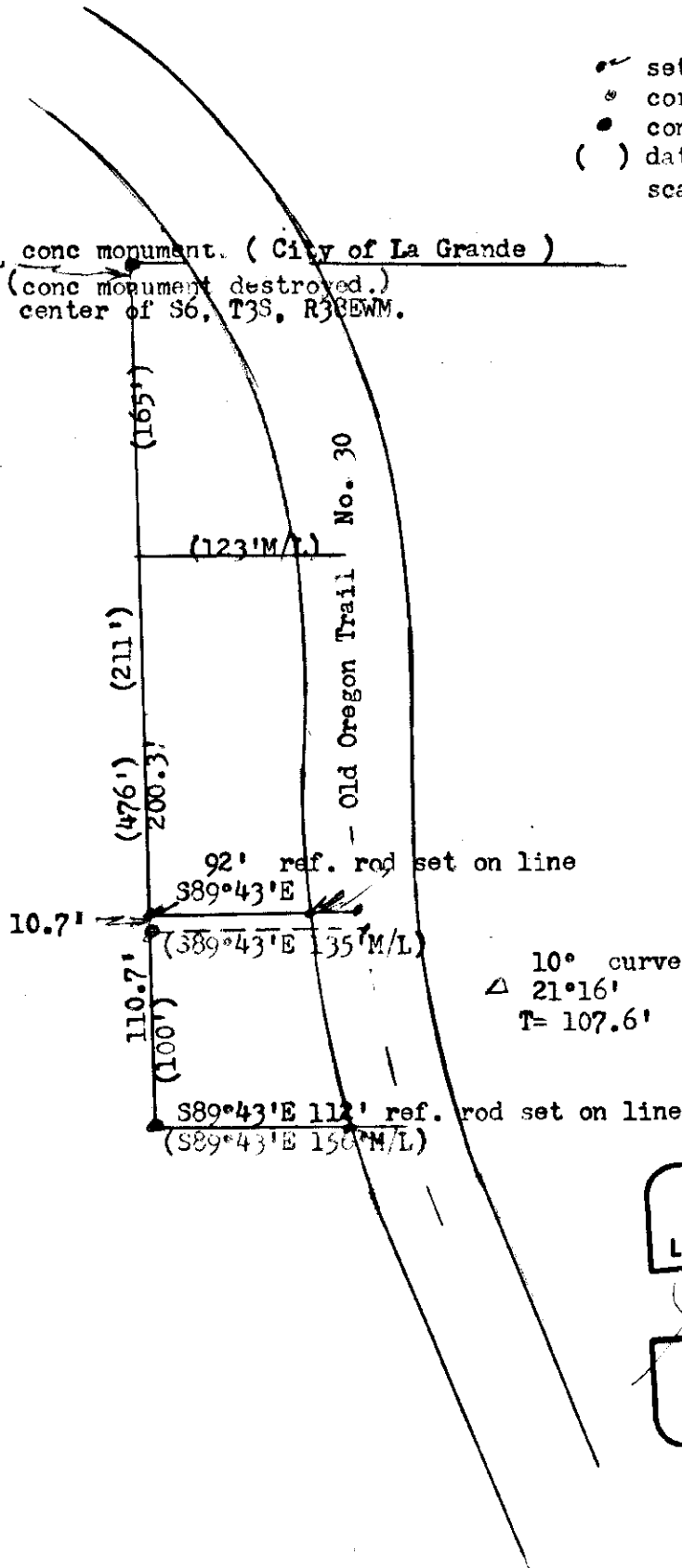


Robert L. Wylam
 1812 Walnut
 La Grande, Oregon

September 19, 1972

- set 5/8" / 30" steel rod
- corners found
- conc. monument fnd.
- () data of record.
- scale 1" = 100'

18'M/L conc monument. (City of La Grande)
 (conc monument destroyed.)
 center of S6, T3S, R3EWM.



REGISTERED
 PROFESSIONAL
 LAND SURVEYOR

James G. Voelz
 OREGON
 MAY 4, 1956
 JAMES G. VOELZ
 381

77-1972

77-72