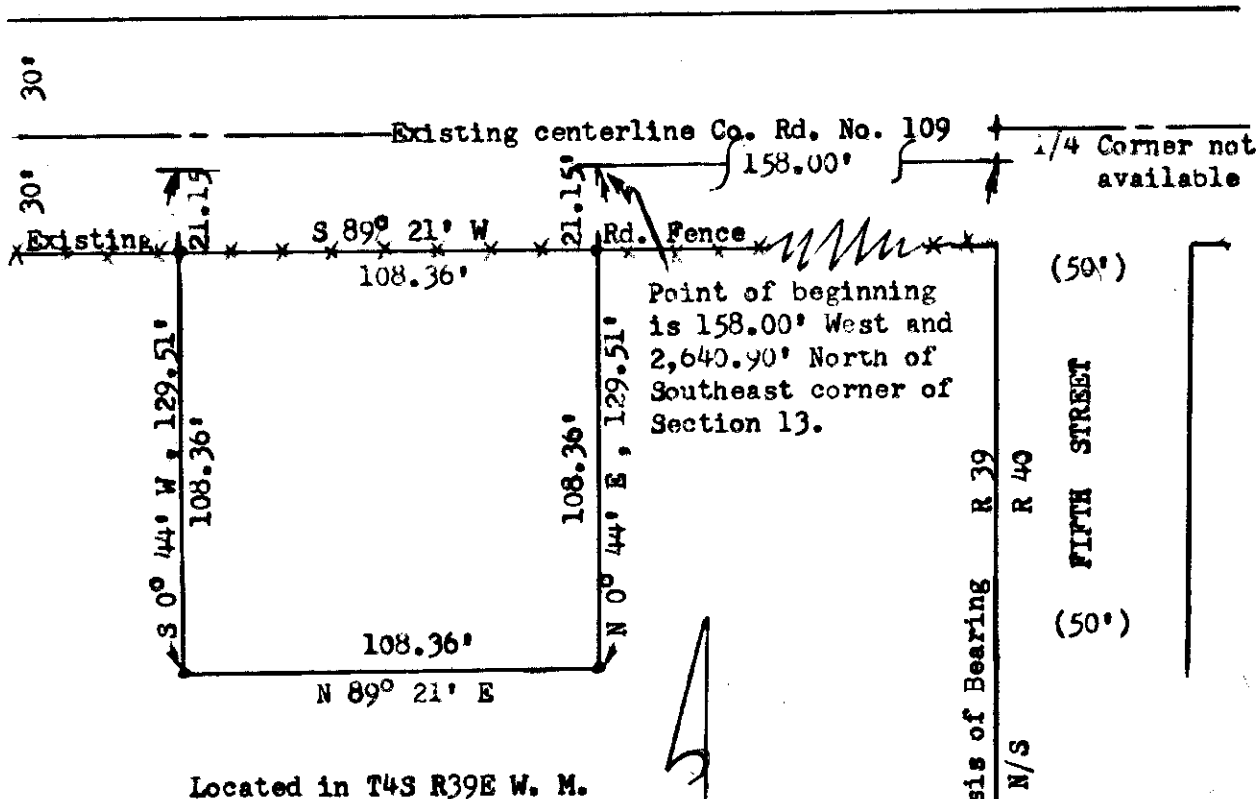


James Siler
Union, Oregon

Scale: 1" = 50'

August 29, 1972

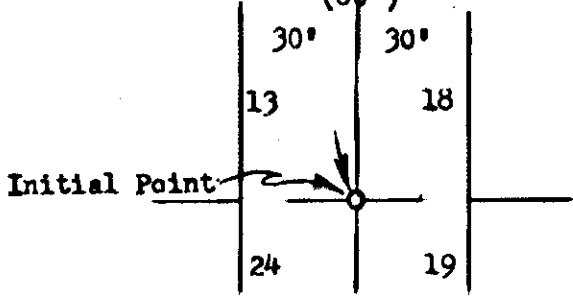
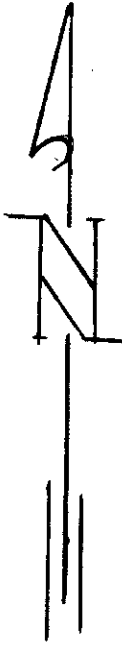
- Set 5/8" X 30" Steel Rods
- Found Stone at Corner
- () Data of Record.



REGISTERED
PROFESSIONAL
LAND SURVEYOR

James G. Voelz

OREGON
MAY 4, 1956
JAMES G. VOELZ
381



71-72

71-72