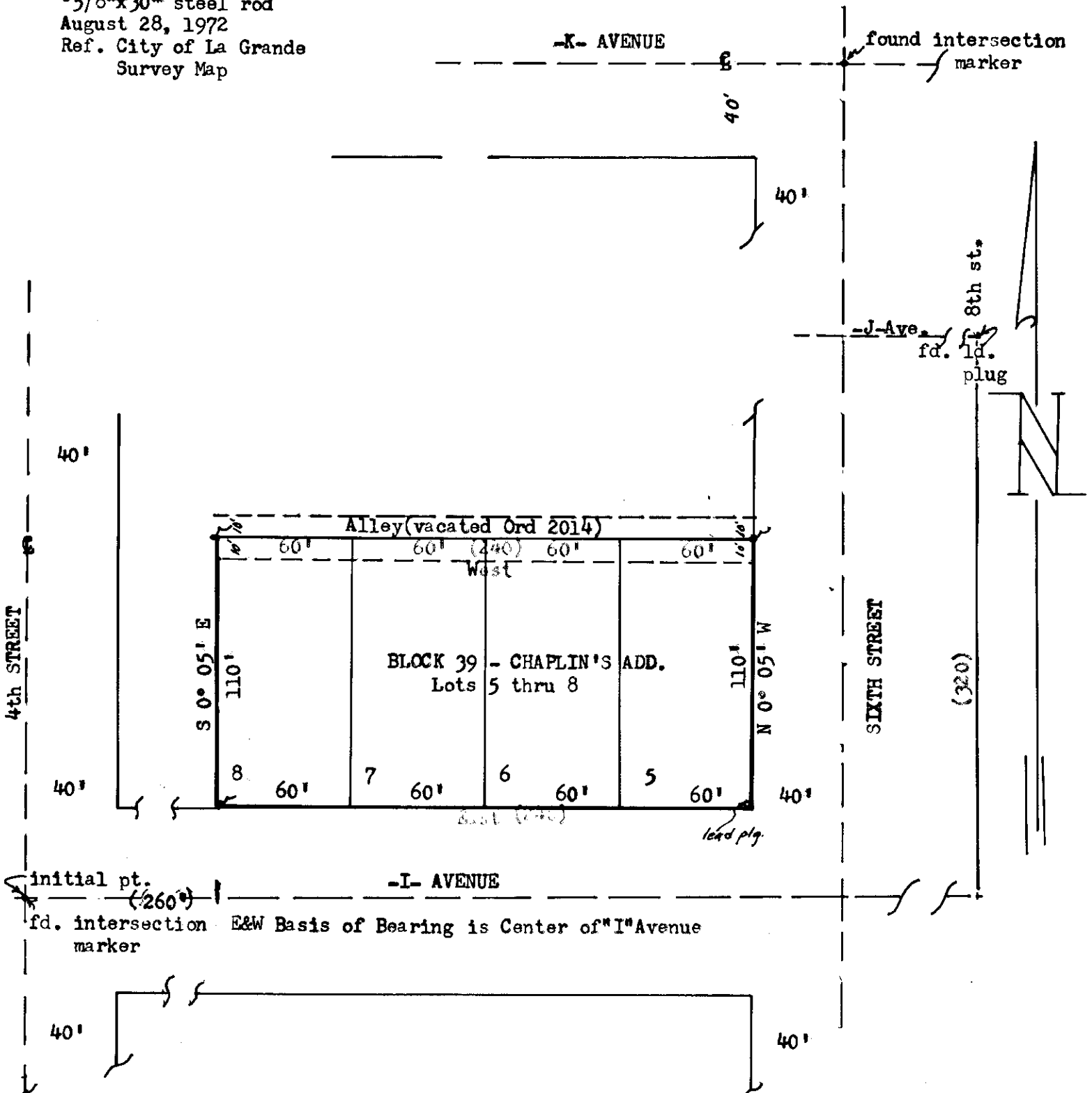


UNITED CHRISTIAN
MINISTRIES INC.

Scale: 1"=60'
() Data of Record
5/8"x30" steel rod
August 28, 1972
Ref. City of La Grande
Survey Map



initial pt. (260°)
fd. intersection marker E&W Basis of Bearing is Center of "I" Avenue

REGISTERED
PROFESSIONAL
LAND SURVEYOR
James G. Voelz
MAY 2, 1956
JAMES G. VOELZ
381

70-1972

70-72