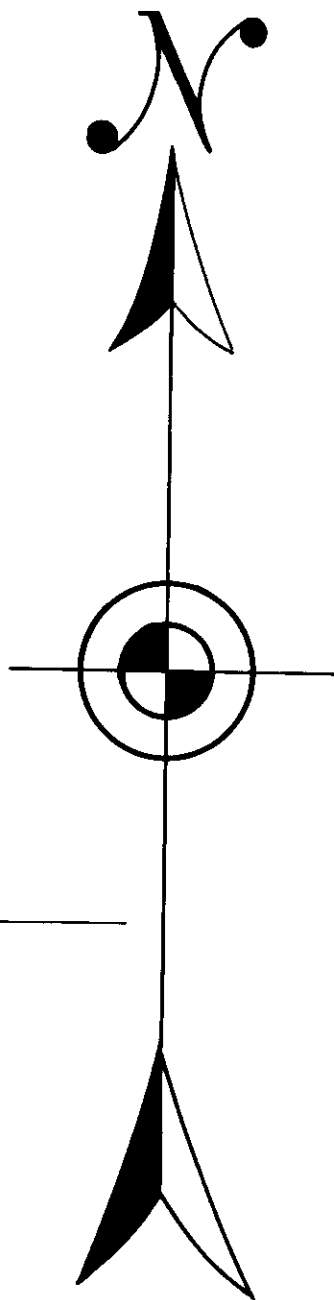
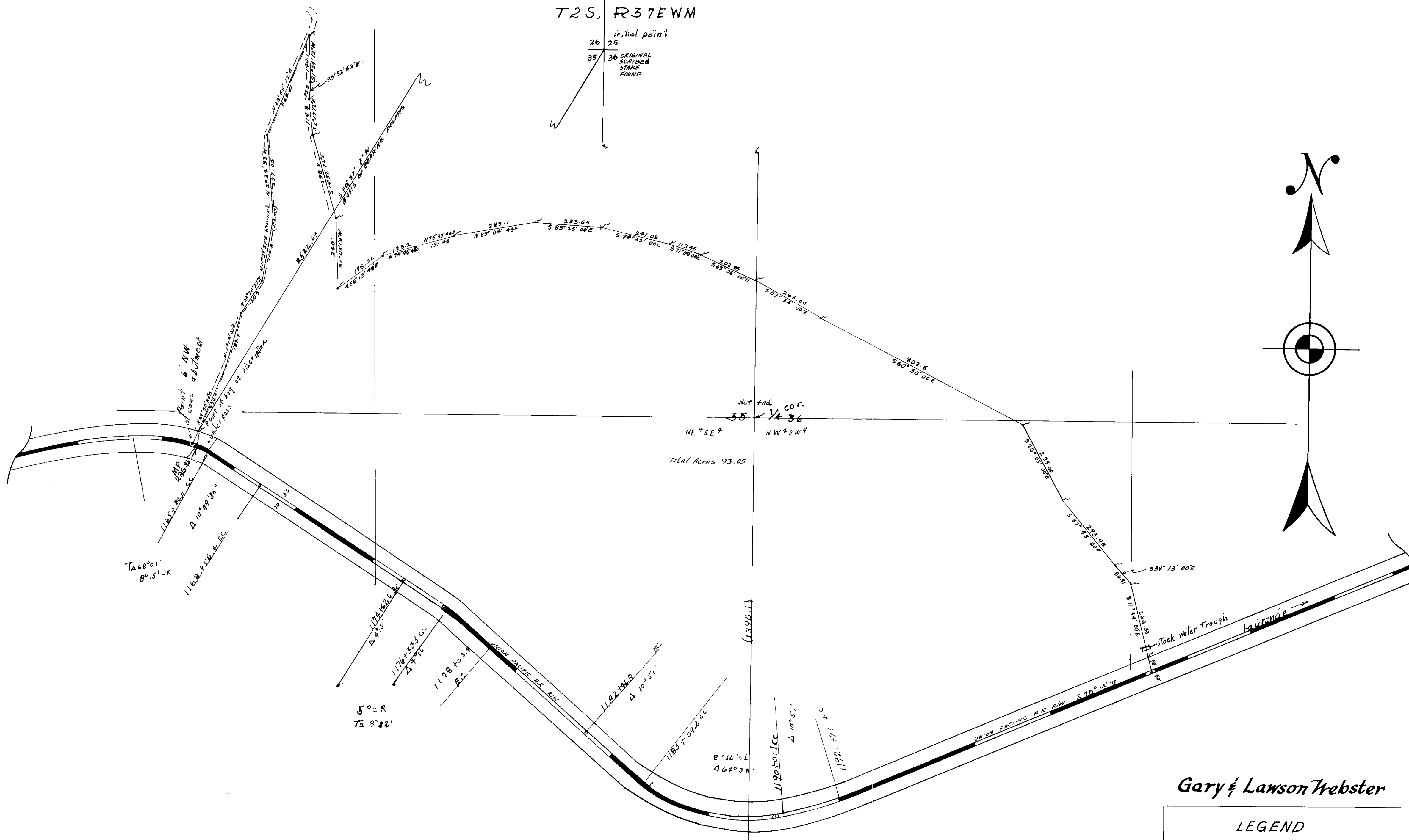


T2S, R37EWM

26
25
35
36
initial point
ORIGINAL
SCRIBED
STAKE
FOUND



Gary & Lawson Webster

LEGEND

- Scale: 1" = 200'
- Date: Aug 15, 1972
- Basis of Bearing: Polaris
- Corner Set: 3/8" x 30" Steel Rod
- 1/2" x 30" Steel Rod
- () recorded data
- Ref. R.R. map

REGISTERED
PROFESSIONAL
LAND SURVEYOR
James L. Webster
JAN 1 1972

6572