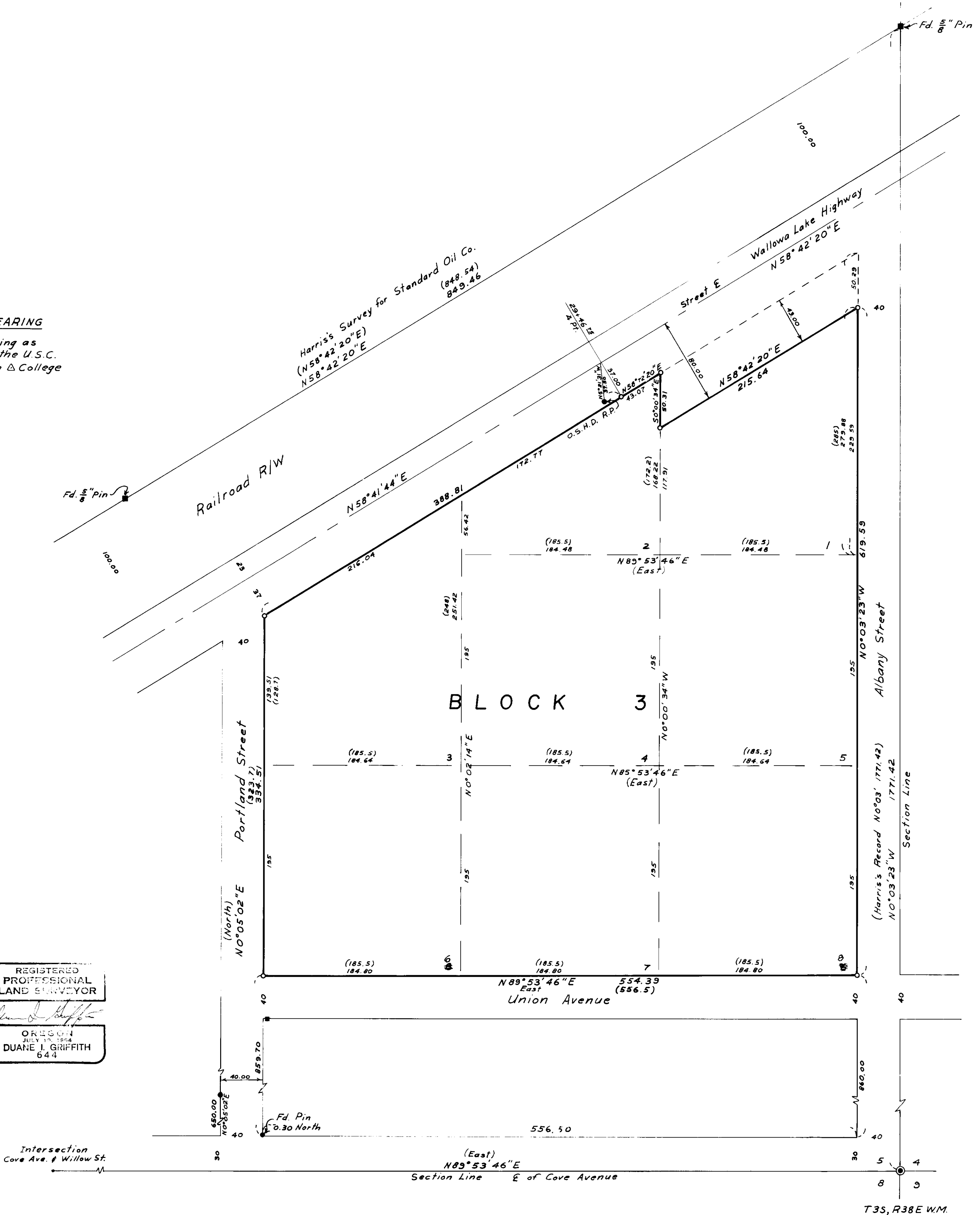




BASIS OF BEARING

Forward Bearing as
Published by the U.S.C.
and G.S. from Δ College
to Δ Valley.



REGISTERED
PROFESSIONAL
LAND SURVEYOR
Duane J. Griffith
OREGON
JULY 17, 1964
DUANE J. GRIFFITH
644

Intersection
Cove Ave. & Willow St.

REFERENCE MATERIAL
Unrecorded Survey by Harris
for Standard Oil Co.
Survey #14-63
Survey #60-70
City Survey Map (1922)
O.S.H.D. Maps
Revised Plat of Home
Investment Add.

LEGEND
● Fd. Monument of Record
■ Fd. Unrecorded Monument
○ Set $\frac{5}{8}$ " x 30" Iron Pin with Plastic
Cap Marked BGF Survey Mk.
() Record Brg. and Dist. if Different
From True.

BAGETT-GRIFFITH-FERGUSON
LaGrande, Oregon
Map of Survey
Block 3
Home Investment Addition
UNION COUNTY, OREGON

SURVEYED FOR	Albertsons Inc	by	DIG
DESIGNED FOR		by	
Scale:	1" = 60'	Drawn by	DIG
			May 24, 1972