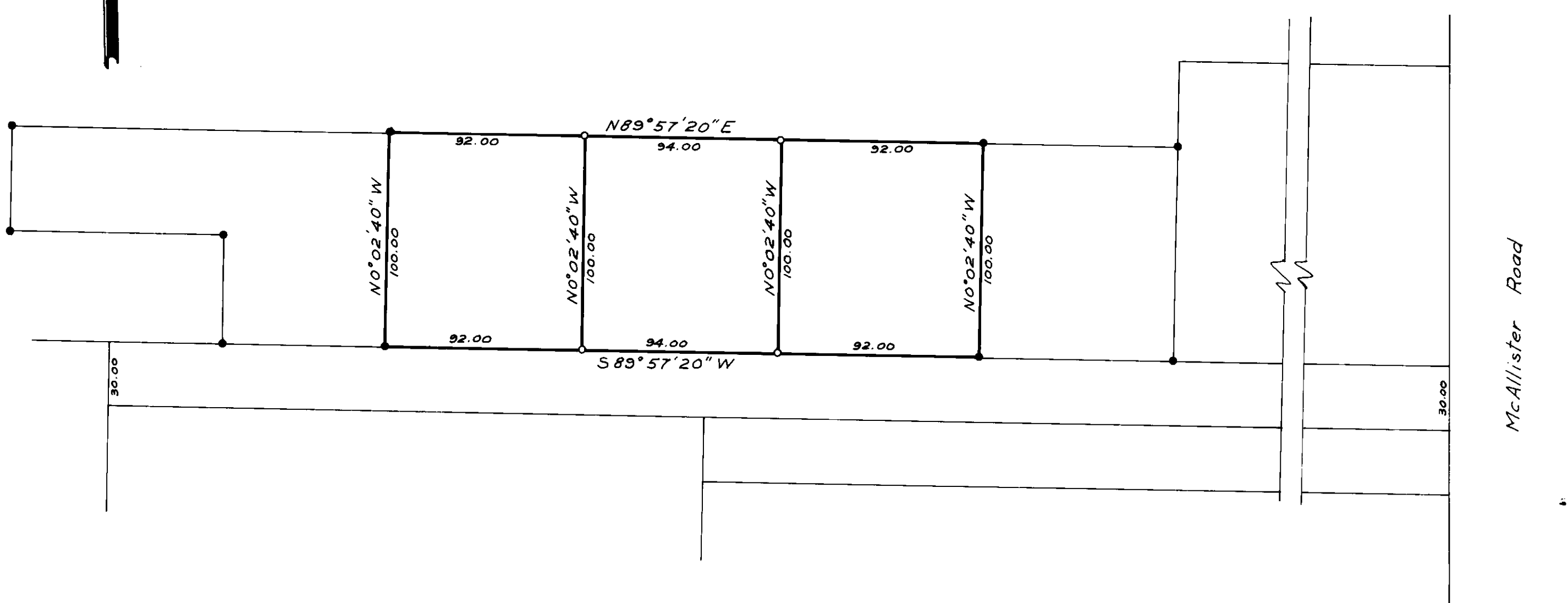




Basis of Bearings
Survey No. 56-71



REFERENCE MATERIAL
Map of Survey No. 56-71

LEGEND

- Fd. Monument of Record
- Set 1/2" x 24" Iron Pin

REGISTERED
PROFESSIONAL
LAND SURVEYOR

Duane I. Griffith

OREGON
JULY 10, 1964
DUANE I. GRIFFITH
644

BAGETT-GRIFFITH-FERGUSON
La Grande, Oregon

Map of Survey
Correction for Map of Survey No. 27-72
Parcels in the SE 1/4 of the NW 1/4
Section 3T3S R38 E W.M.
Island City
UNION COUNTY, OREGON

SURVEYED FOR	Dale Young	by DIG
DESIGNED FOR		by
Scale: 1" = 50'	Drawn by LET	May 1972

27A-72