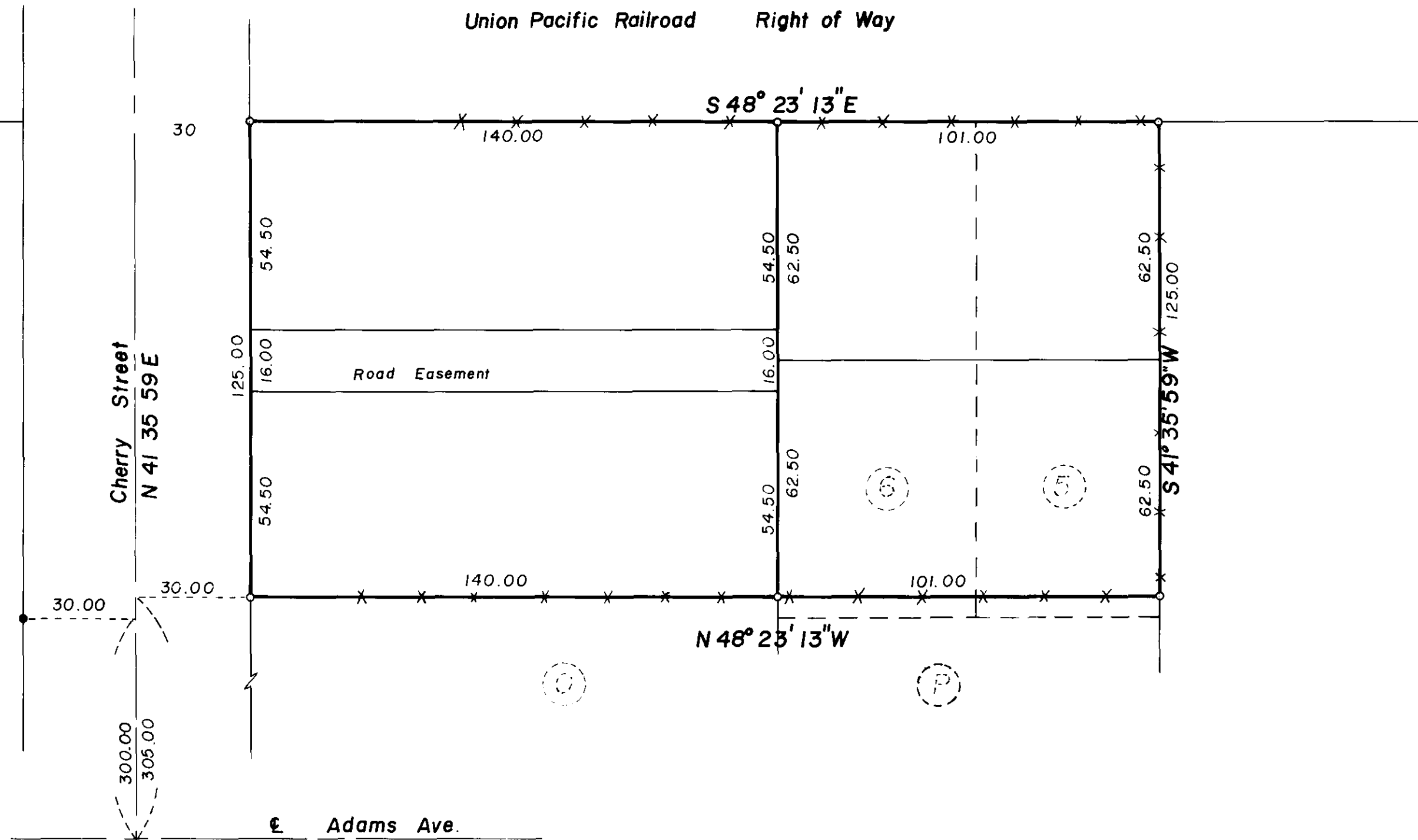


Union Pacific Railroad Right of Way



BASIS OF BEARING
 Forward bearing, as published
 by the U.S.C. & G.S. from
 A College to A Valley.

REGISTERED
 PROFESSIONAL
 LAND SURVEYOR
Duane J. Griffith
 OREGON
 JULY 10, 1964
 DUANE J. GRIFFITH
 644

LEGEND

- Fd. Monument of record
- Set 5/8" X 30" iron pin with pastic cap marked BGF survey mk.
- X-X- Existing fence lines

REFERENCE MATERIALS

- City Control Map (1922)
- Map of Survey # 55
- " " " # 56
- " " " # 38-71
- " " " # 94-71

BAGETT-GRIFFITH-FERGUSON

La Grande, Oregon

Map of Survey

Portions of tracts O & P of Coggan's
 Addition to La Grande, Union County, Oregon

SURVEYED FOR	Larry Yount	
SURVEYED BY	DIG	Feb. 1972
Scale: 1" = 30'	Drawn by: dig	Feb. 1972

1-1972