

Clark Ruckman
 1002-- 14th. St.
 La Grande, Oregon

November 20, 1971

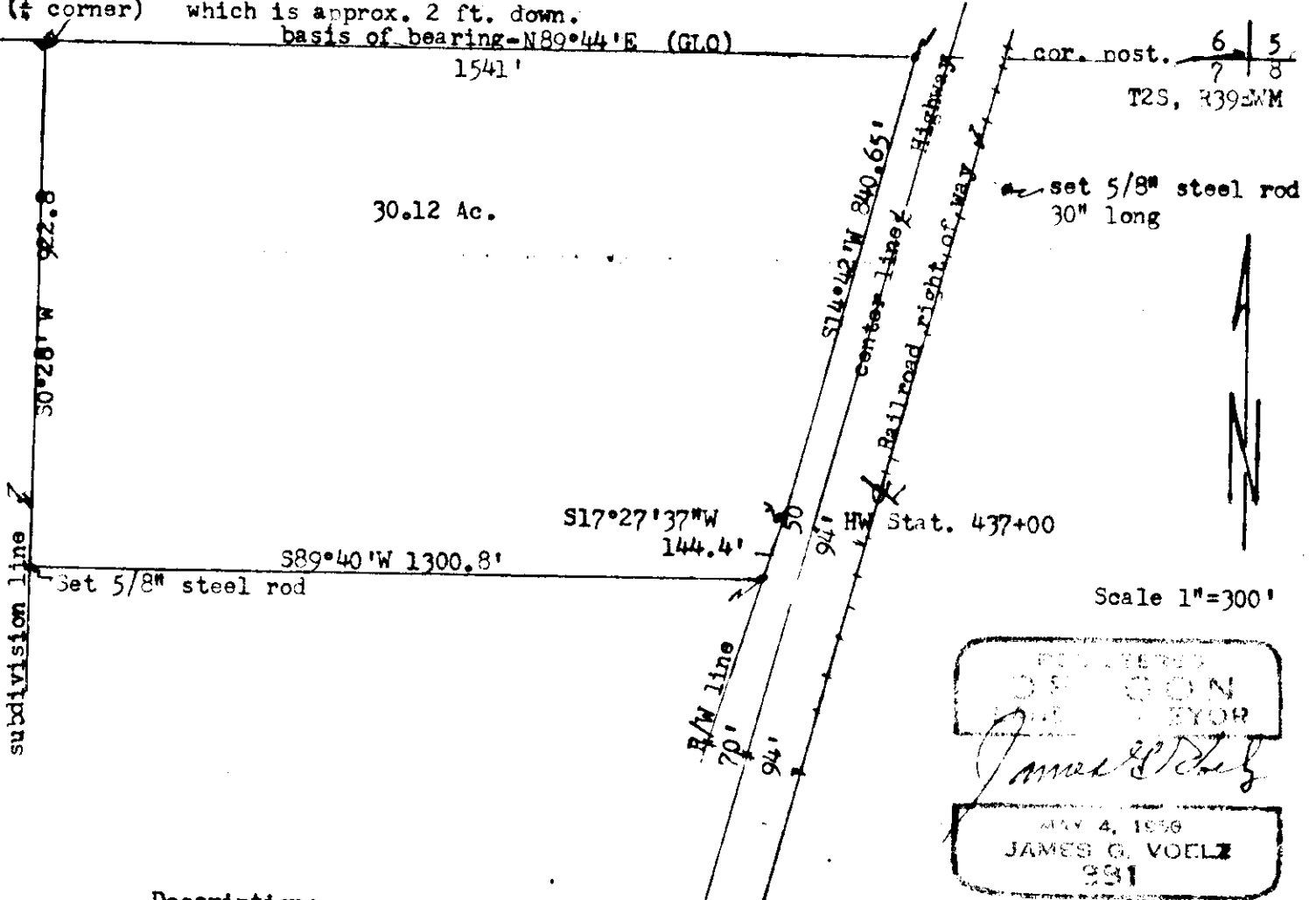
steel fence post and found old post
 (1/4 corner) which is approx. 2 ft. down.

basis of bearing-N89°44'E (GLO)
 1541'

cor. post. $\frac{6}{7} \frac{5}{8}$
 T2S, R39EWM

30.12 Ac.

set 5/8" steel rod
 30" long



Description;

Beginning at the north one quarter corner of Section 7, T2S, R39EWM.
 Thence on the north boundary of said section N89°44'E 1541 ft.
 to the west edge of Highway way right of way.
 Thence following the highway right of way on the west side S14°42'W 840.65';
 Thence S17°27'37"W 114.4 ft.;
 Thence S89°40'W 1300.8 ft. more or less to the west boundary of NW 1/4 NE 1/4 of
 said section 7;
 Thence following the west boundary of NW 1/4 NE 1/4 (N0°28'E) 922.8 ft. to
 point of beginning.
 SITUATED in North one half of NE 1/4 of section 7 T2S, R39EWM and containing
 30.12 Ac. more or less.