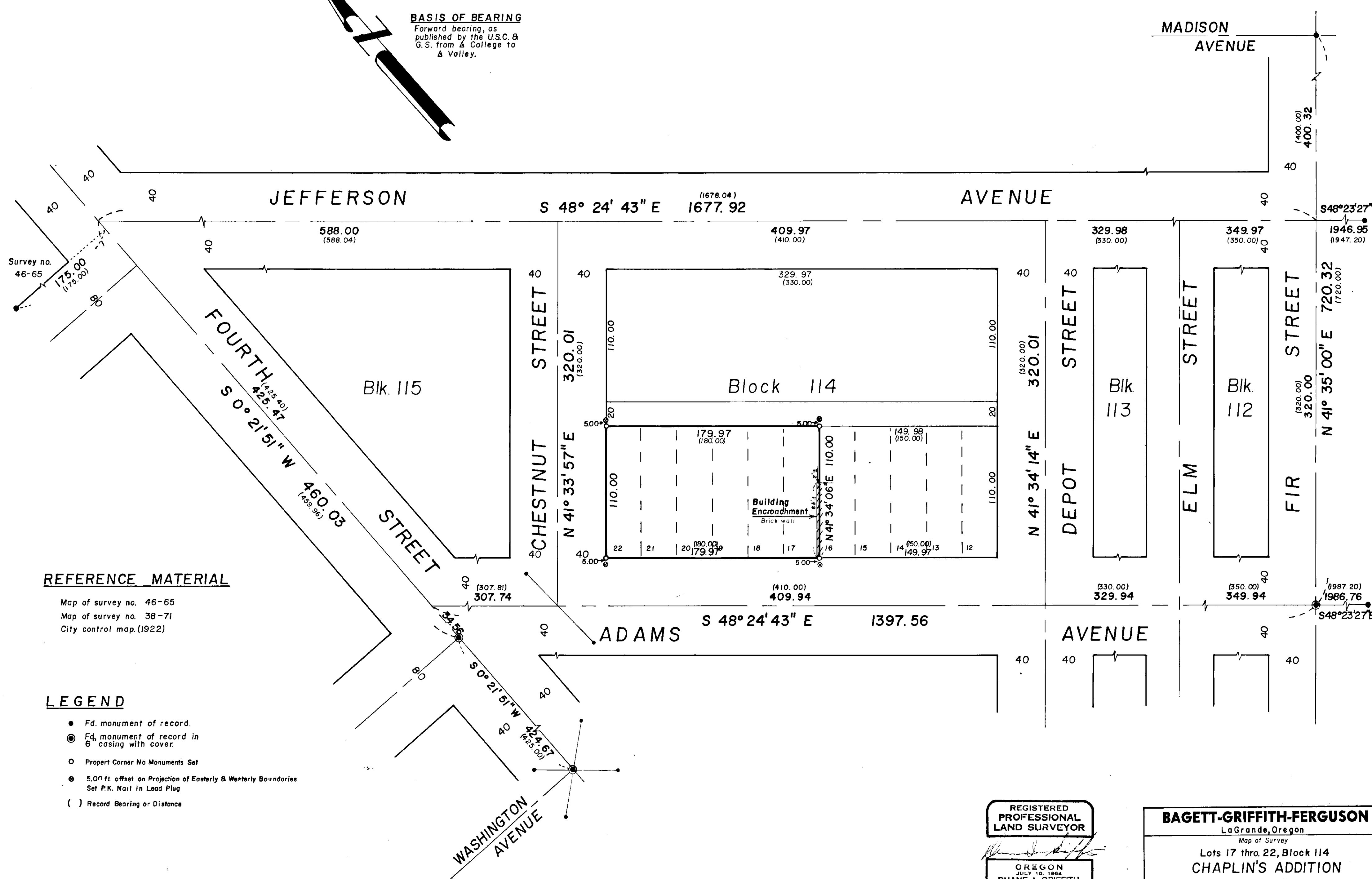


**BASIS OF BEARING**  
 Forward bearing, as published by the U.S.C. & G.S. from A College to A Valley.



**REFERENCE MATERIAL**

Map of survey no. 46-65  
 Map of survey no. 38-71  
 City control map. (1922)

**LEGEND**

- Fd. monument of record.
- ⊙ Fd. monument of record in 6" casing with cover.
- Proper Corner No Monuments Set
- ⊙ 5.00 ft. offset on Projection of Easterly & Westerly Boundaries Set P.K. Nail in Lead Plug
- ( ) Record Bearing or Distance

REGISTERED  
 PROFESSIONAL  
 LAND SURVEYOR

OREGON  
 JULY 10, 1964  
 DUANE I. GRIFFITH  
 644

**BAGETT-GRIFFITH-FERGUSON**

LaGrande, Oregon

Map of Survey

Lots 17 thru. 22, Block 114

**CHAPLIN'S ADDITION**

LaGrande  
 Union County, Oregon

SURVEYED FOR GENERAL TELEPHONE CO.

SURVEYED BY D.I.G. Dec. 1971

Scale: 1" = 50' Drawn by: D.I.G. Dec. 1971