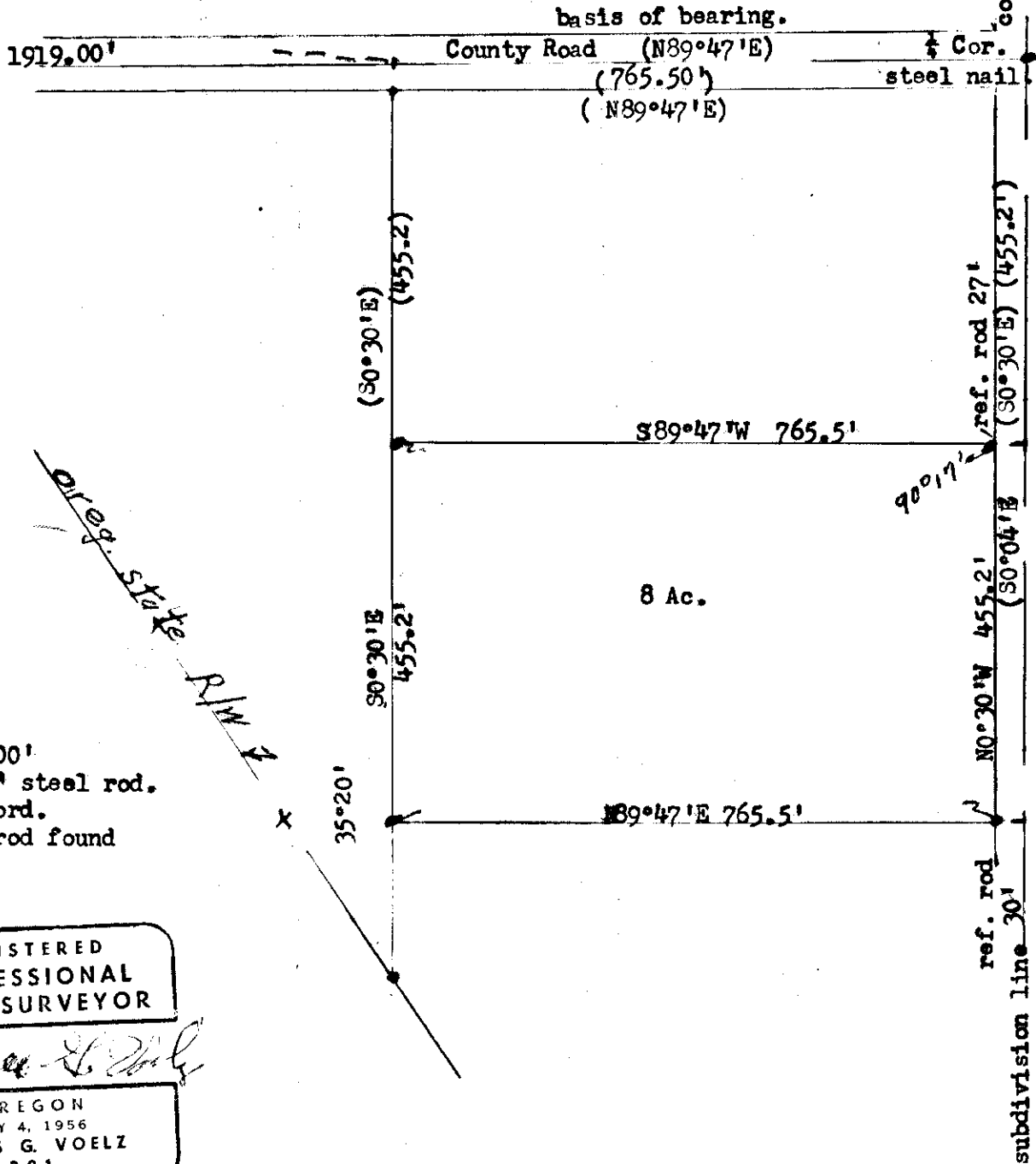
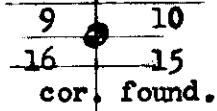


E. Miller
 P.O. Box 288
 La Grande, Oregon

November 3, 1971

T3S. R38EWM
 Initial point



scale 1" = 200'

- set 5/8"x30" steel rod.
- () data of record.
- 5/8" steel rod found

REGISTERED
 PROFESSIONAL
 LAND SURVEYOR

James G. Voelz

OREGON
 MAY 4, 1956
 JAMES G. VOELZ
 381

76-1971A

76-71-A