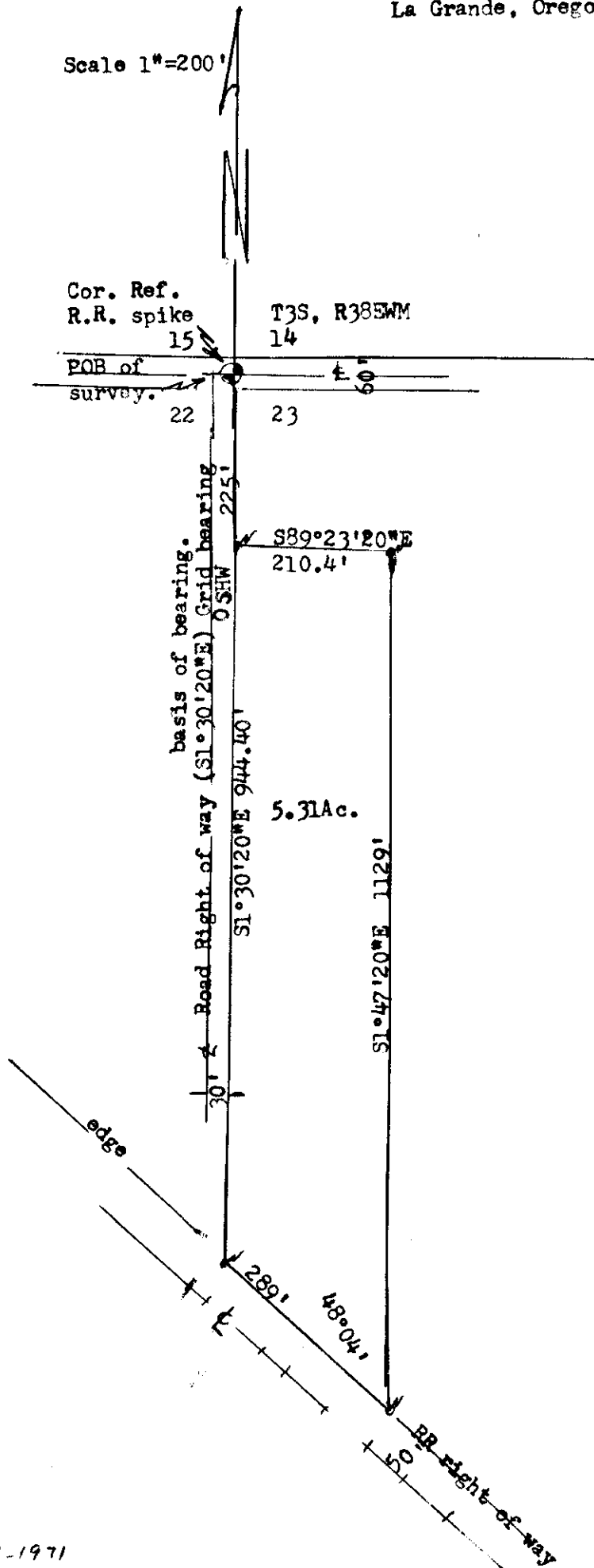


Cecil DeLong
Rt. # 2
La Grande, Oregon

January 14, 1971

Scale 1"=200'



set 5/8" Steel road

REGISTERED
PROFESSIONAL
LAND SURVEYOR

James G. Voelz

OREGON
MAY 4, 1966
JAMES G. VOELZ
381

63-1971

63-71